

LEGEND - PROPOSED

- 200' STATION
- MILE POST
- 345 kV DUCT BANK CENTERLINE (2 CIRCUITS - EXPORT)
- 345 kV DUCT BANK CENTERLINE (2 CIRCUITS - INTERCONNECTION)
- 345 kV DUCT BANK CENTERLINE (1 CIRCUIT - EXPORT)
- 345 kV DUCT BANK CENTERLINE (1 CIRCUIT - INTERCONNECTION)
- 138 kV SYSTEM INTERCONNECTION DUCT BANK CENTERLINE (1 CIRCUIT)

- POI FENCE
- HORIZONTAL AUGER BORE (TRENCHLESS CROSSING)
- HORIZONTAL DIRECTIONAL DRILL (TRENCHLESS CROSSING)
- JOINT BAY
- TRANSITION VAULT
- TEMPORARY AUXILIARY PIT
- CABLE BRIDGE AND BRIDGE TRANSITION AREA
- SUBSTATION

LEGEND - EXISTING

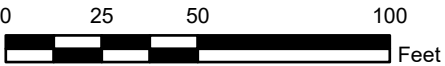
- 2' CONTOUR
- PUBLIC CONTOUR BOUNDARY
- PROPERTY LINE*
- JURISDICTIONAL BOUNDARY**

*ASSESSOR'S PARCEL NO. (APN) SHOWN WITHIN PROPERTY LINE
**SOURCE NY GIS CLEARINGHOUSE

NOTES

- EXISTING UTILITIES NOT SHOWN.
- DUCT BANK SHALL MAINTAIN MINIMUM DEPTH OF COVER OF 3 FT.
- LOCATION OF ALIGNMENT, JOINT BAYS, AND TRANSITION VAULTS SUBJECT TO CHANGE DURING DETAILED DESIGN PHASE.
- THE SURVEYED CONTOURS AND IMAGERY SHOWN ARE FROM AN AERIAL FLIGHT FLOWN ON 04/23/2021 PROVIDED BY ROBINSON AERIAL.
- BATHYMETRIC DATA IS FROM PUBLIC SOURCES (NOAA).
- PROPERTY LINES SHOWN ON THIS MAP ARE TAX MAP GRADE AND NOT A RESULT OF A BOUNDARY SURVEY.
- HORIZONTAL DATUM IS NAD83, NEW YORK STATE PLANE, LONG ISLAND US FOOT. VERTICAL DATUM IS NAVD1988.
- DRAWINGS ARE FOR PERMITTING PURPOSES ONLY, NOT FOR CONSTRUCTION.

PLAN SCALE



M
MOTT
MACDONALD

Mott MacDonald NY Inc.
1400 Broadway, 21st Floor
New York, NY 10018-0000
Certificate of Authorization #: 0017019



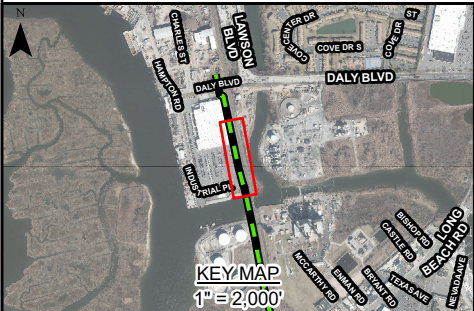
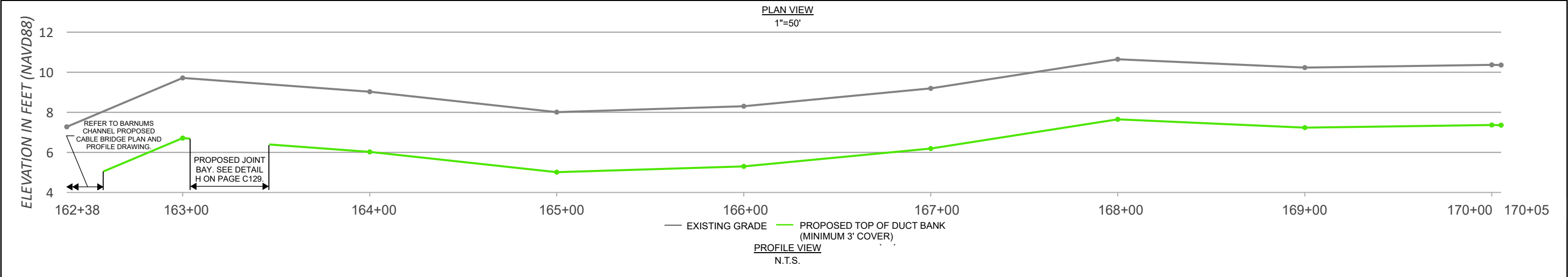
Client:

E	05/30/2023	SNP	RE-ISSUED FOR ARTICLE VII APP.	KEK	MDN
D	04/04/2023	SNP	RE-ISSUED FOR ARTICLE VII APP. (2 CIRCUIT)	KEK	MDN
C	11/18/2022	SNP	RE-ISSUED FOR ARTICLE VII APP.	KEK	MDN
B	08/30/2022	SNP	RE-ISSUED FOR ARTICLE VII APP.	KEK	MDN
A	05/13/2022	SNP	ISSUED FOR ARTICLE VII APP.	KEK	MDN
Rev	Date	Drawn	Description	Ch'k'd	App'd

Date	Project Number	B/O	Total
	505100001		

D'gn'd	Eng Chk	Coord.	App'd	Security
Drawn	Coord.	App'd	Rev	STD
Dwg Chk	App'd	Rev	Rev	STD
Plan Scale	Status	Rev	Rev	STD
1" = 50'	PRE	E	STD	
Drawing Number	C123			

Title
EMPIRE OFFSHORE WIND LLC.
EMPIRE WIND 2 PROJECT
PLAN AND PROFILE
NASSAU COUNTY, NEW YORK
ISSUED FOR ARTICLE VII APPLICATION



LEGEND - PROPOSED

- 200' STATION
- MILE POST
- 345 kV DUCT BANK CENTERLINE (2 CIRCUITS - EXPORT)
- 345 kV DUCT BANK CENTERLINE (2 CIRCUITS - INTERCONNECTION)
- 345 kV DUCT BANK CENTERLINE (1 CIRCUIT - EXPORT)
- 345 kV DUCT BANK CENTERLINE (1 CIRCUIT - INTERCONNECTION)
- 138 kV SYSTEM INTERCONNECTION DUCT BANK CENTERLINE (1 CIRCUIT)
- POI FENCE
- HORIZONTAL AUGER BORE (TRENCHLESS CROSSING)
- HORIZONTAL DIRECTIONAL DRILL (TRENCHLESS CROSSING)
- JOINT BAY
- TRANSITION VAULT
- TEMPORARY AUXILIARY PIT
- CABLE BRIDGE AND BRIDGE TRANSITION AREA
- SUBSTATION

LEGEND - EXISTING

- 2' CONTOUR
- PUBLIC CONTOUR BOUNDARY
- PROPERTY LINE*
- JURISDICTIONAL BOUNDARY**

*ASSESSOR'S PARCEL NO. (APN) SHOWN WITHIN PROPERTY LINE
**SOURCE NY GIS CLEARINGHOUSE

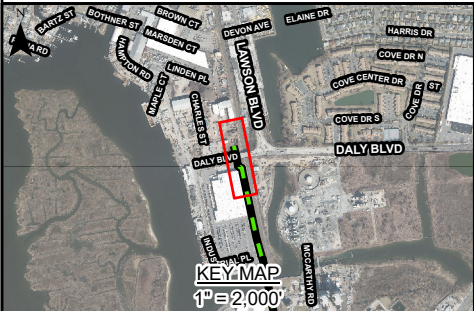
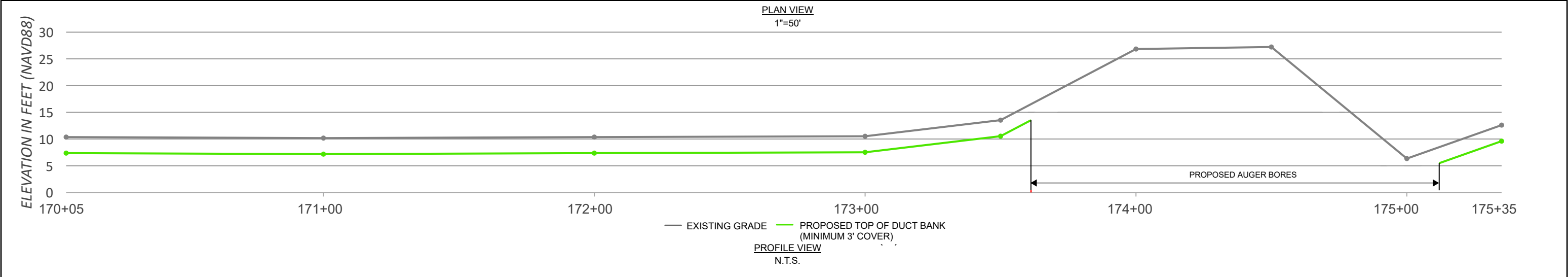
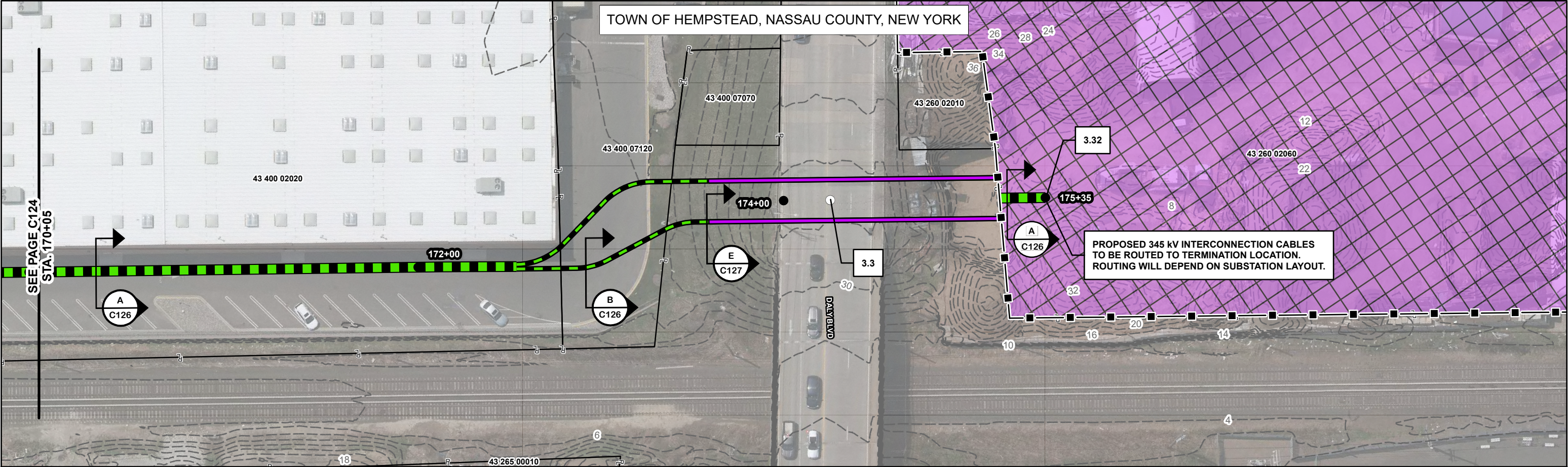
NOTES

- EXISTING UTILITIES NOT SHOWN.
- DUCT BANK SHALL MAINTAIN MINIMUM DEPTH OF COVER OF 3 FT.
- LOCATION OF ALIGNMENT, JOINT BAYS, AND TRANSITION VAULTS SUBJECT TO CHANGE DURING DETAILED DESIGN PHASE.
- THE SURVEYED CONTOURS AND IMAGERY SHOWN ARE FROM AN AERIAL FLIGHT FLOWN ON 04/23/2021 PROVIDED BY ROBINSON AERIAL.
- BATHYMETRIC DATA IS FROM PUBLIC SOURCES (NOAA).
- PROPERTY LINES SHOWN ON THIS MAP ARE TAX MAP GRADE AND NOT A RESULT OF A BOUNDARY SURVEY.
- HORIZONTAL DATUM IS NAD83, NEW YORK STATE PLANE, LONG ISLAND US FOOT. VERTICAL DATUM IS NAVD1988.
- DRAWINGS ARE FOR PERMITTING PURPOSES ONLY, NOT FOR CONSTRUCTION.

PLAN SCALE

0 25 50 100 Feet

<div><div>M</div><div>M</div><div>MOTT MACDONALD</div></div> <div>Mott MacDonald NY Inc. 1400 Broadway, 21st Floor New York, NY 10018-0000 Certificate of Authorization #: 0017019</div> <div><div>© Mott MacDonald</div><div>This document is issued for the party which commissioned it and for specific purposes connected with the captioned project only. It should not be relied upon by any other party or used for any other purpose. We accept no responsibility for the consequences of this document being relied upon by any other party, or being used for any other purpose, or containing any error or omission which is due to an error or omission in data supplied to us by other parties</div></div>	<div><div>Mott MacDonald NY Inc.</div><div>1400 Broadway, 21st Floor</div><div>New York, NY 10018-0000</div><div>Certificate of Authorization #: 0017019</div></div> <div><div>equinor</div></div>	Client:	E	05/30/2023	SNP	RE-ISSUED FOR ARTICLE VII APP.	KEK	MDN	<div><div>_____</div><div>Date _____</div></div>	<div><div>Project Number</div><div>505100001</div></div>	<div><div>B/O</div></div>	<div><div>Total</div></div>	D'gn'd			Eng Chk			<div><div>Title</div><div>EMPIRE OFFSHORE WIND LLC.</div><div>EMPIRE WIND 2 PROJECT</div><div>PLAN AND PROFILE</div><div>NASSAU COUNTY, NEW YORK</div><div>ISSUED FOR ARTICLE VII APPLICATION</div></div>
		Drawn			Coord.														
		Dwg Chk			App'd														
		Plan Scale	1" = 50'		Status	PRE		Rev					E		Security	STD			



LEGEND - PROPOSED

- 200' STATION
- MILE POST
- 345 kV DUCT BANK CENTERLINE (2 CIRCUITS - EXPORT)
- 345 kV DUCT BANK CENTERLINE (2 CIRCUITS - INTERCONNECTION)
- 345 kV DUCT BANK CENTERLINE (1 CIRCUIT - EXPORT)
- 345 kV DUCT BANK CENTERLINE (1 CIRCUIT - INTERCONNECTION)
- 138 kV SYSTEM INTERCONNECTION DUCT BANK CENTERLINE (1 CIRCUIT)

- POI FENCE
- HORIZONTAL AUGER BORE (TRENCHLESS CROSSING)
- HORIZONTAL DIRECTIONAL DRILL (TRENCHLESS CROSSING)
- JOINT BAY
- TRANSITION VAULT
- TEMPORARY AUXILIARY PIT
- CABLE BRIDGE AND BRIDGE TRANSITION AREA
- SUBSTATION

LEGEND - EXISTING

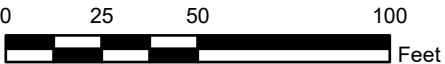
- 2' CONTOUR
- PUBLIC CONTOUR BOUNDARY
- PROPERTY LINE*
- JURISDICTIONAL BOUNDARY**

*ASSESSOR'S PARCEL NO. (APN) SHOWN WITHIN PROPERTY LINE
**SOURCE NY GIS CLEARINGHOUSE

NOTES

- EXISTING UTILITIES NOT SHOWN.
- DUCT BANK SHALL MAINTAIN MINIMUM DEPTH OF COVER OF 3 FT.
- LOCATION OF ALIGNMENT, JOINT BAYS, AND TRANSITION VAULTS SUBJECT TO CHANGE DURING DETAILED DESIGN PHASE.
- THE SURVEYED CONTOURS AND IMAGERY SHOWN ARE FROM AN AERIAL FLIGHT FLOWN ON 04/23/2021 PROVIDED BY ROBINSON AERIAL.
- BATHYMETRIC DATA IS FROM PUBLIC SOURCES (NOAA).
- PROPERTY LINES SHOWN ON THIS MAP ARE TAX MAP GRADE AND NOT A RESULT OF A BOUNDARY SURVEY.
- HORIZONTAL DATUM IS NAD83, NEW YORK STATE PLANE, LONG ISLAND US FOOT. VERTICAL DATUM IS NAVD1988.
- DRAWINGS ARE FOR PERMITTING PURPOSES ONLY, NOT FOR CONSTRUCTION.

PLAN SCALE



M
MOTT
MACDONALD

Mott MacDonald NY Inc.
1400 Broadway, 21st Floor
New York, NY 10018-0000
Certificate of Authorization #: 0017019



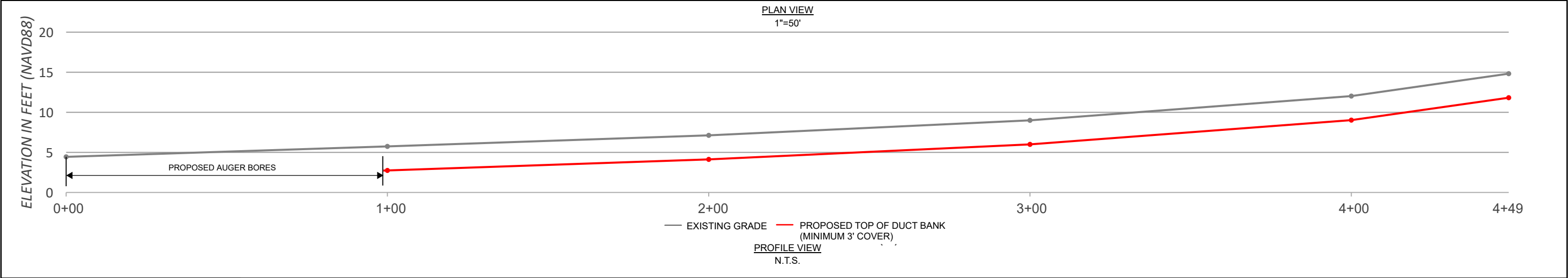
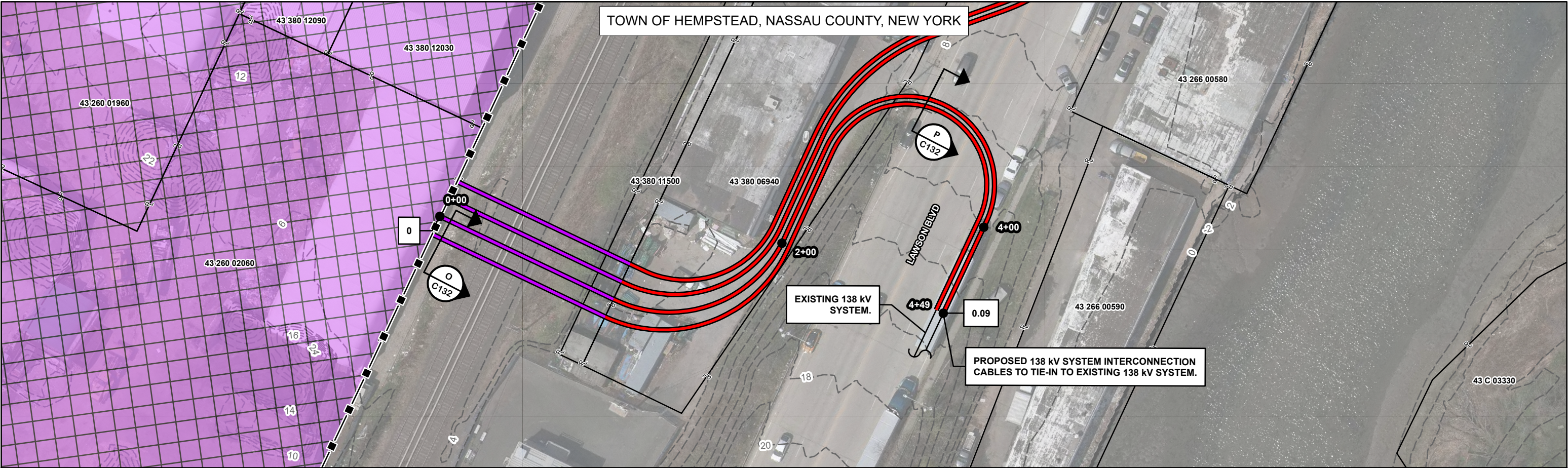
Client:

E	05/30/2023	SNP	RE-ISSUED FOR ARTICLE VII APP.	KEK	MDN
D	04/04/2023	SNP	RE-ISSUED FOR ARTICLE VII APP. (2 CIRCUIT)	KEK	MDN
C	11/18/2022	SNP	RE-ISSUED FOR ARTICLE VII APP.	KEK	MDN
B	08/30/2022	SNP	RE-ISSUED FOR ARTICLE VII APP.	KEK	MDN
A	05/13/2022	SNP	ISSUED FOR ARTICLE VII APP.	KEK	MDN
Rev	Date	Drawn	Description	Ch'k'd	App'd

Date	Project Number	B/O	Total
	505100001		

D'gn'd	Eng Chk	Coord.	App'd	Security
Drawn				
Dwg Chk				
Plan Scale	Status	Rev	Security	
1" = 50'	PRE	D	STD	
Drawing Number				
C125				

Title
EMPIRE OFFSHORE WIND LLC.
EMPIRE WIND 2 PROJECT
PLAN AND PROFILE
NASSAU COUNTY, NEW YORK
ISSUED FOR ARTICLE VII APPLICATION



LEGEND - PROPOSED

- 200' STATION
- MILE POST
- 345 kV DUCT BANK CENTERLINE (2 CIRCUITS - EXPORT)
- 345 kV DUCT BANK CENTERLINE (2 CIRCUITS - INTERCONNECTION)
- 345 kV DUCT BANK CENTERLINE (1 CIRCUIT - EXPORT)
- 345 kV DUCT BANK CENTERLINE (1 CIRCUIT - INTERCONNECTION)
- 138 kV SYSTEM INTERCONNECTION DUCT BANK CENTERLINE (1 CIRCUIT)
- POI FENCE
- HORIZONTAL AUGER BORE (TRENCHLESS CROSSING)
- HORIZONTAL DIRECTIONAL DRILL (TRENCHLESS CROSSING)
- JOINT BAY
- TRANSITION VAULT
- TEMPORARY AUXILIARY PIT
- CABLE BRIDGE AND BRIDGE TRANSITION AREA
- SUBSTATION

LEGEND - EXISTING

- 2' CONTOUR
- PUBLIC CONTOUR BOUNDARY
- PROPERTY LINE*
- JURISDICTIONAL BOUNDARY**

*ASSESSOR'S PARCEL NO. (APN) SHOWN WITHIN PROPERTY LINE
**SOURCE NY GIS CLEARINGHOUSE

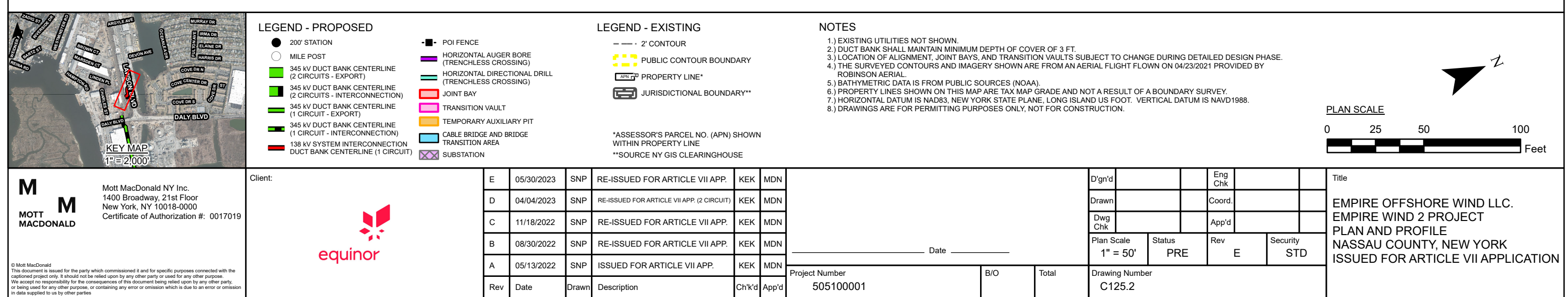
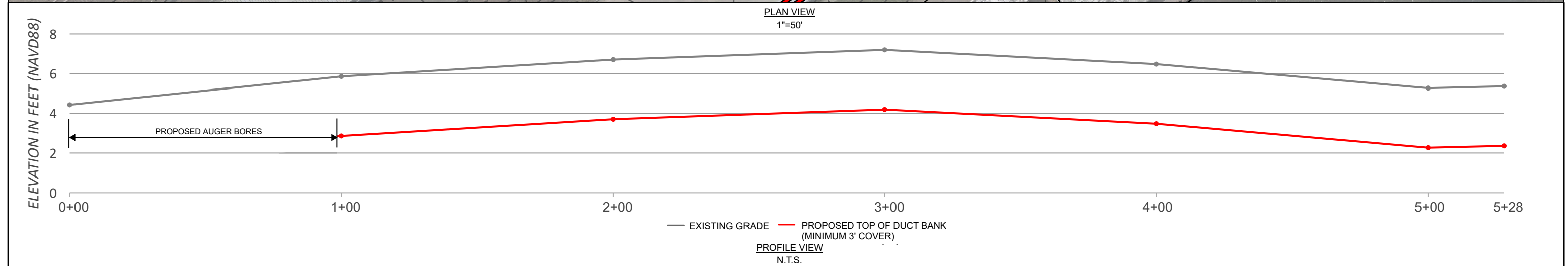
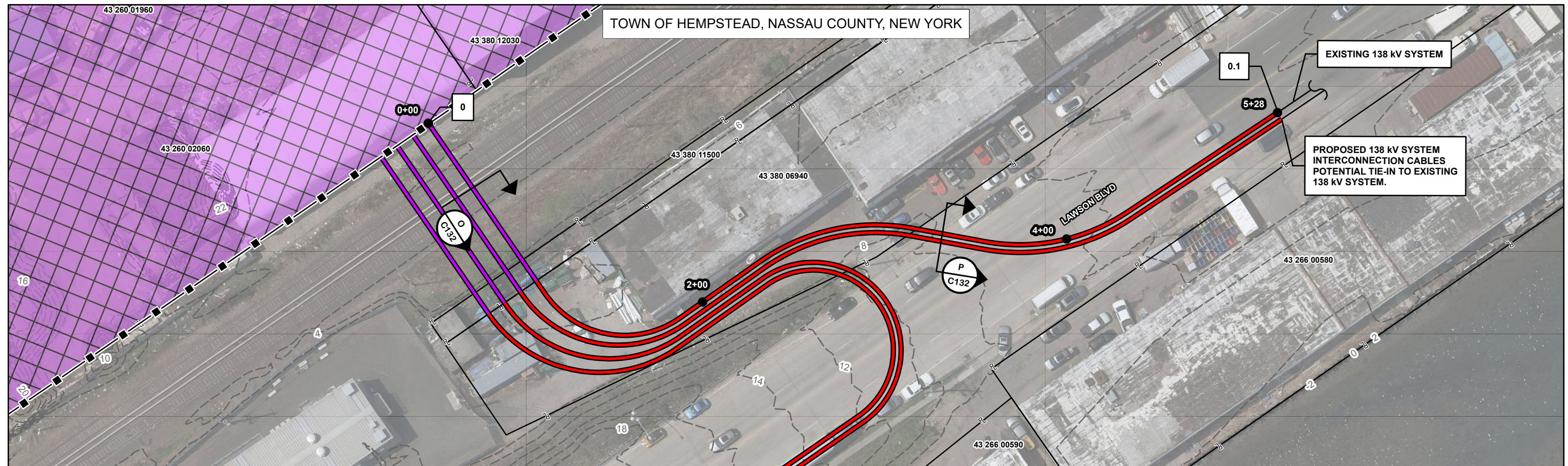
NOTES

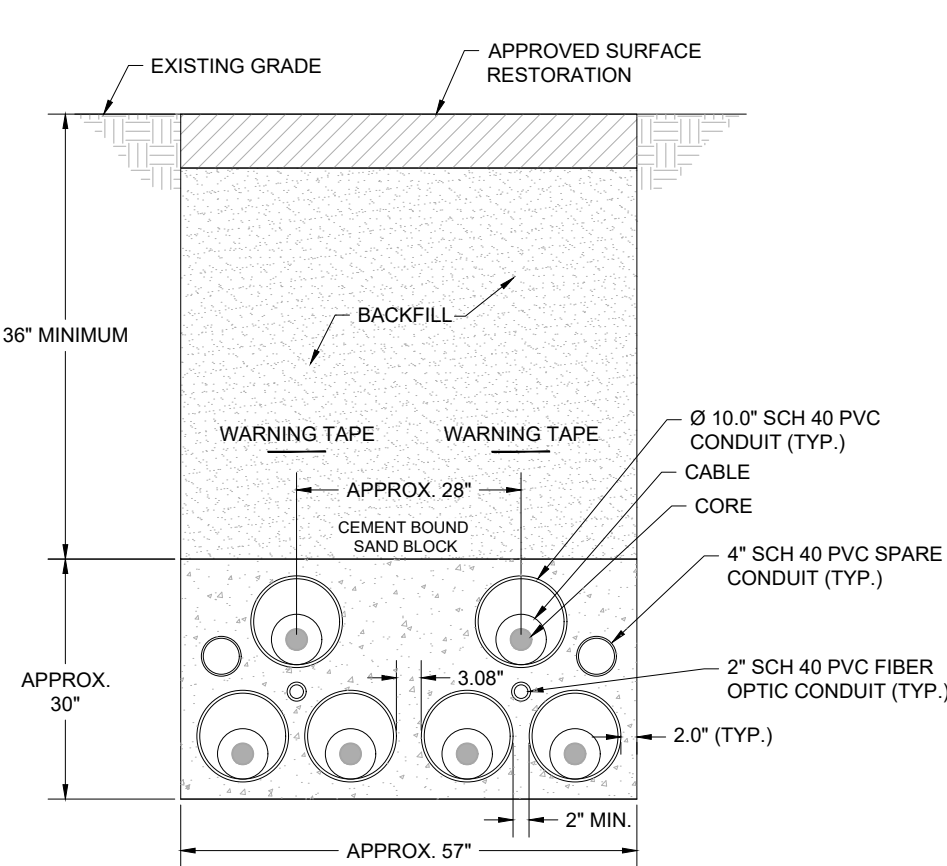
- EXISTING UTILITIES NOT SHOWN.
- DUCT BANK SHALL MAINTAIN MINIMUM DEPTH OF COVER OF 3 FT.
- LOCATION OF ALIGNMENT, JOINT BAYS, AND TRANSITION VAULTS SUBJECT TO CHANGE DURING DETAILED DESIGN PHASE.
- THE SURVEYED CONTOURS AND IMAGERY SHOWN ARE FROM AN AERIAL FLIGHT FLOWN ON 04/23/2021 PROVIDED BY ROBINSON AERIAL.
- BATHYMETRIC DATA IS FROM PUBLIC SOURCES (NOAA).
- PROPERTY LINES SHOWN ON THIS MAP ARE TAX MAP GRADE AND NOT A RESULT OF A BOUNDARY SURVEY.
- HORIZONTAL DATUM IS NAD83, NEW YORK STATE PLANE, LONG ISLAND US FOOT. VERTICAL DATUM IS NAVD1988.
- DRAWINGS ARE FOR PERMITTING PURPOSES ONLY, NOT FOR CONSTRUCTION.

PLAN SCALE

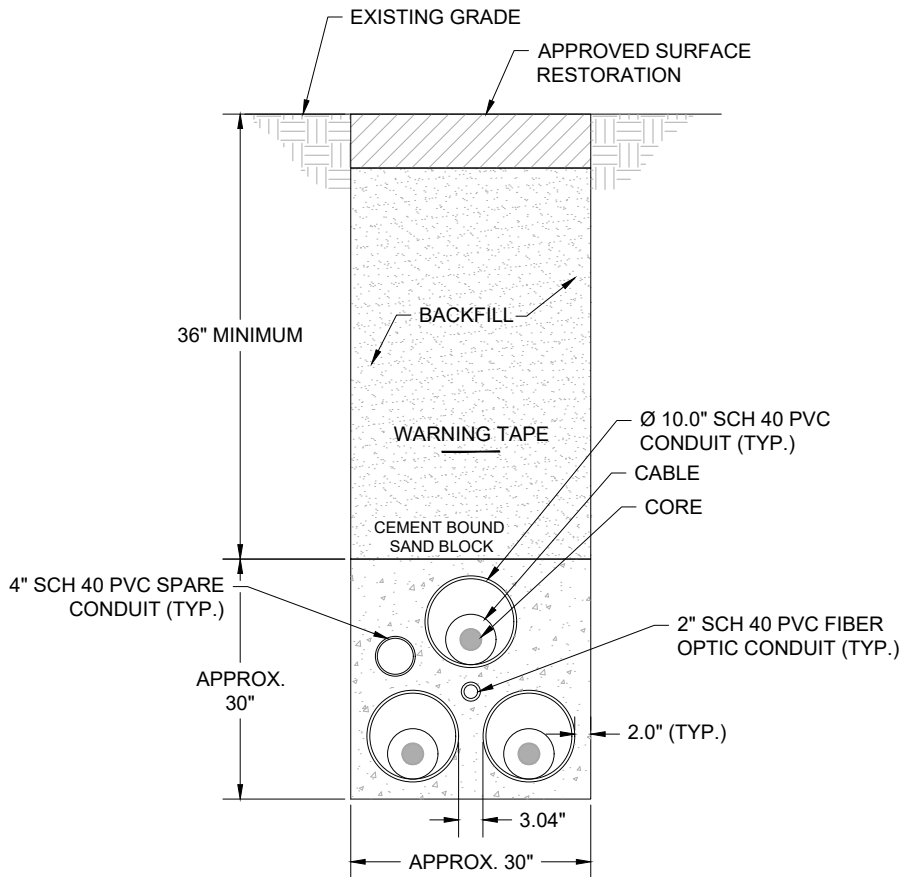
0 25 50 100 Feet

<div><div>M</div><div>M</div><div>MOTT MACDONALD</div></div> <div>Mott MacDonald NY Inc. 1400 Broadway, 21st Floor New York, NY 10018-0000 Certificate of Authorization #: 0017019</div> <div><div>© Mott MacDonald</div><div>This document is issued for the party which commissioned it and for specific purposes connected with the captioned project only. It should not be relied upon by any other party or used for any other purpose. We accept no responsibility for the consequences of this document being relied upon by any other party, or being used for any other purpose, or containing any error or omission which is due to an error or omission in data supplied to us by other parties</div></div>	<div><div>equinor</div></div>	Client:	E	05/30/2023	SNP	RE-ISSUED FOR ARTICLE VII APP.	KEK	MDN	<div><div>_____</div><div>Date _____</div></div>	<div><div>D'gn'd</div></div>	<div><div>Eng Chk</div></div>	<div><div>Coord.</div></div>	<div><div>App'd</div></div>	<div><div>Plan Scale 1" = 50'</div></div>	<div><div>Status PRE</div></div>	<div><div>Rev E</div></div>	<div><div>Security STD</div></div>	<div><div>Title</div><div>EMPIRE OFFSHORE WIND LLC. EMPIRE WIND 2 PROJECT PLAN AND PROFILE NASSAU COUNTY, NEW YORK ISSUED FOR ARTICLE VII APPLICATION</div></div>
			D	04/04/2023	SNP	RE-ISSUED FOR ARTICLE VII APP. (2 CIRCUIT)	KEK	MDN										
			C	11/18/2022	SNP	RE-ISSUED FOR ARTICLE VII APP.	KEK	MDN										
			B	08/30/2022	SNP	RE-ISSUED FOR ARTICLE VII APP.	KEK	MDN										
			A	05/13/2022	SNP	ISSUED FOR ARTICLE VII APP.	KEK	MDN										
			Rev	Date	Drawn	Description	Ch'k'd	App'd	Project Number 505100001	B/O	Total	Drawing Number C125.1						





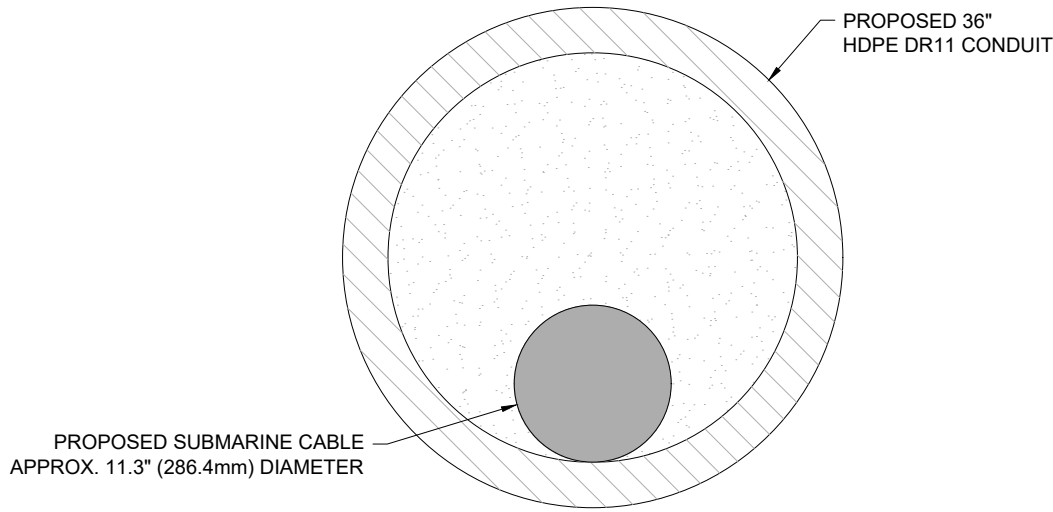
N.T.S.
DUCT BANK SECTION - 2 CIRCUITS (345kV) (A)
TREFOIL CONFIGURATION - HORIZONTAL



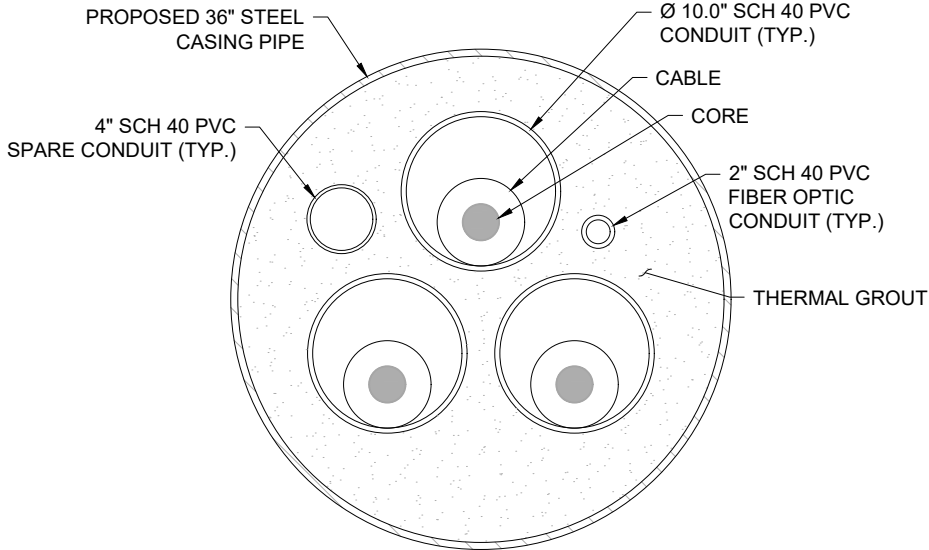
N.T.S.
DUCT BANK SECTION - 1 CIRCUITS (345kV) (B)
TREFOIL CONFIGURATION - HORIZONTAL

© Mott MacDonald
This document is issued for the party which commissioned it and for specific purposes connected with the captioned project only. It should not be relied upon by any other party or used for any other purpose. We accept no responsibility for the consequences of this document being relied upon by any other party, or being used for any other purpose, or containing any error or omission which is due to an error or omission in data supplied to us by other parties.

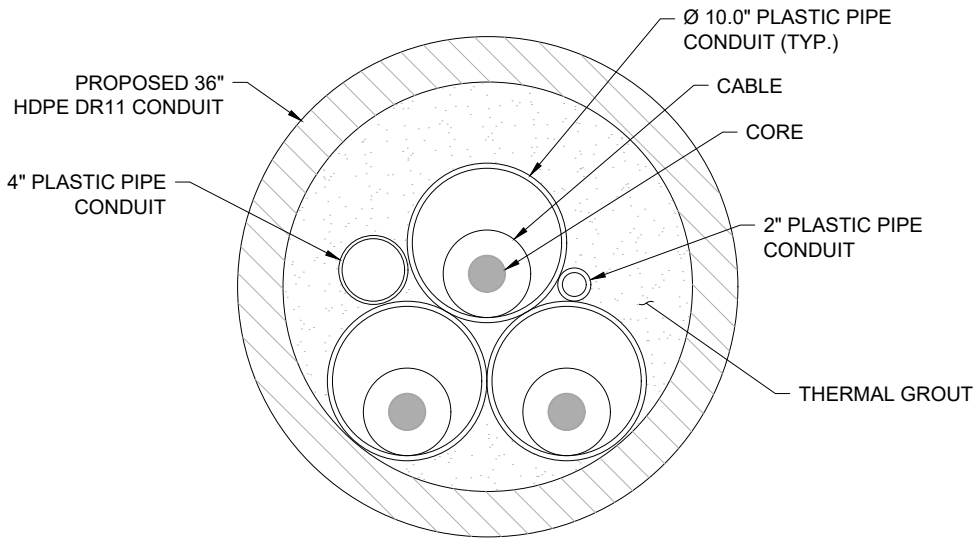
<div>MOTT MACDONALD</div> <div>Mott MacDonald NY Inc. 1400 Broadway, 21st Floor New York, NY 10018-0000 Certificate of Authorization #: 0017019</div> <div>www.mottmacamericas.com</div>	<div>Client</div> <div>EMPIRE OFFSHORE WIND LLC.</div> <div></div>												<div>Title</div> <div>EMPIRE OFFSHORE WIND LLC. EMPIRE WIND 2 PROJECT CONSTRUCTION DETAILS NASSAU COUNTY, NEW YORK ISSUED FOR ARTICLE VII APPLICATION</div>				
									Designed		JSR			Eng check		AP	
									Drawn		JSR			Coordination		KEK	
									Dwg check		JF			Approved		MDN	
								Scale at ANSI D		Status		Rev		Security			
								N.T.S.		PRE		E		STD			
								Project Number		B/O		Total		Drawing Number			
								505100904						C126			
								Date									
								Rev		Date		Drawn		Description			
						Ch'i'd		App'd									



N.T.S.
HDD SECTION FOR SUBMARINE CABLE
1 CIRCUIT



N.T.S.
AUGER BORE SECTION FOR INTERCONNECTION CABLES
1 CIRCUIT



N.T.S.
HDD SECTION FOR ONSHORE EXPORT CABLES
1 CIRCUIT



© Mott MacDonald
This document is issued for the party which commissioned it and for specific purposes connected with the captioned project only. It should not be relied upon by any other party or used for any other purpose. We accept no responsibility for the consequences of this document being relied upon by any other parties, or being used for any other purpose, or containing any error or omission which is due to an error or omission in data supplied to us by other parties.

M

M

MOTT
MACDONALD

Mott MacDonald NY Inc.
1400 Broadway, 21st Floor
New York, NY 10018-0000
Certificate of Authorization #: 0017019

www.mottmacamericas.com

Client EMPIRE OFFSHORE WIND LLC.



E	05/30/2023	JSR	RE-ISSUED FOR ARTICLE VII APP. (2 CIRCUIT)	KEK	MDN
D	04/04/2023	JSR	RE-ISSUED FOR ARTICLE VII APP. (2 CIRCUIT)	KEK	MDN
C	11/18/2022	SNP	RE-ISSUED FOR ARTICLE VII APP.	KEK	MDN
B	08/30/2022	SNP	RE-ISSUED FOR ARTICLE VII APP.	KEK	MDN
A	05/13/2022	SNP	ISSUED FOR ARTICLE VII APP.	KEK	MDN
Rev	Date	Drawn	Description	Ch'k'd	App'd

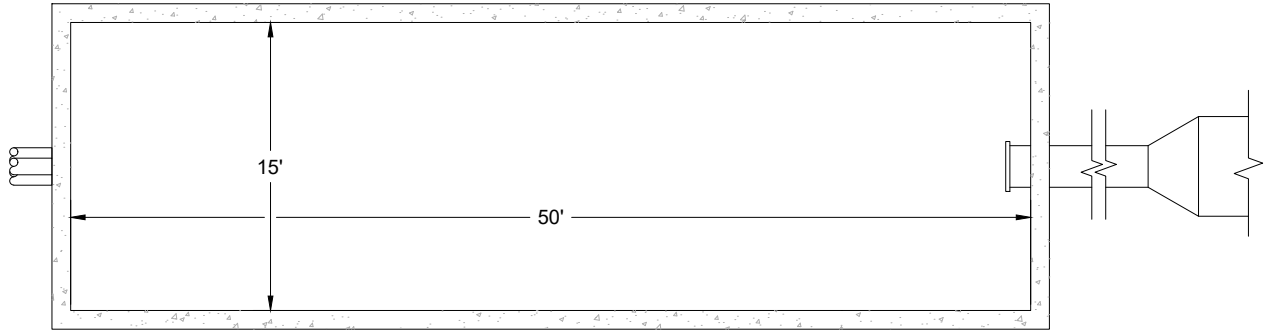
Project Number
505100904

B/O

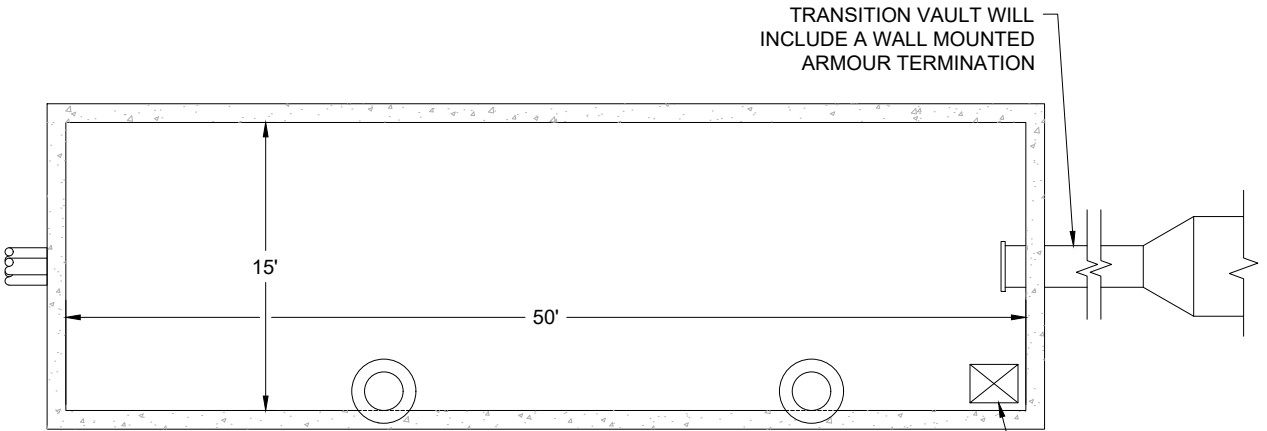
Total

Designed	JSR		Eng check	AP	
Drawn	JSR		Coordination	KEK	
Dwg check	JF		Approved	MDN	
Scale at ANSI D N.T.S.	Status PRE	Rev E	Security STD		
Drawing Number	C127				

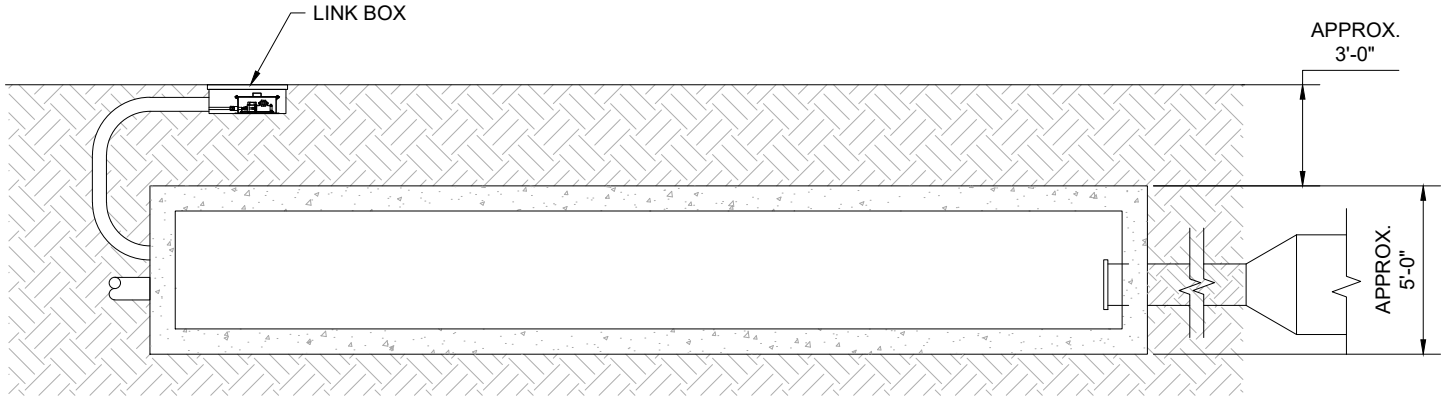
Title
EMPIRE OFFSHORE WIND LLC.
EMPIRE WIND 2 PROJECT
CONSTRUCTION DETAILS
NASSAU COUNTY, NEW YORK
ISSUED FOR ARTICLE VII APPLICATION



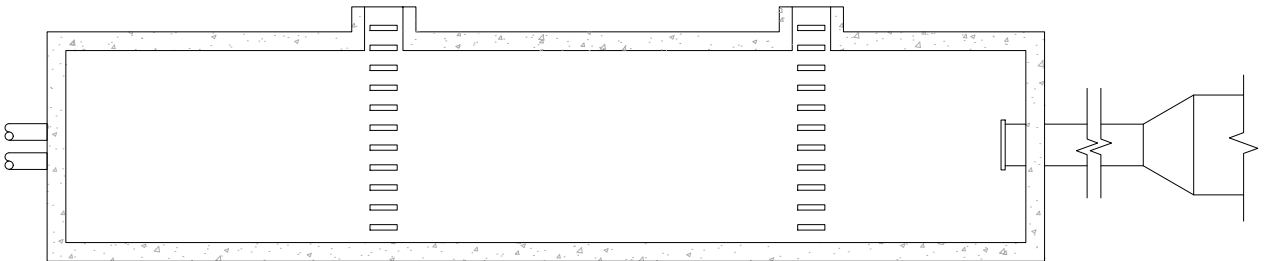
TYPICAL CABLE TRANSITION VAULT
PLAN VIEW
N.T.S.



TYPICAL CABLE TRANSITION VAULT
PLAN VIEW
N.T.S.



TYPICAL CABLE TRANSITION VAULT
ELEVATION VIEW
N.T.S.



TYPICAL CABLE TRANSITION VAULT
ELEVATION VIEW
N.T.S.

NOTE:
FOR THE CABLE TRANSITION VAULT - 1 CIRCUIT, THERE MAY
BE A NEED FOR FIBER OPTIC HANDHOLE; REFER TO DETAIL "N"

N.T.S.
CABLE TRANSITION VAULT - 1 CIRCUIT
BURIED F

N.T.S.
CABLE TRANSITION VAULT - 1 CIRCUIT
MANHOLE ALTERNATIVE G

© Mott MacDonald

This document is issued for the party which commissioned it and for specific purposes connected with the captioned project only. It should not be relied upon by any other party or used for any other purpose. We accept no responsibility for the consequences of this document being relied upon by any other party, or being used for any other purpose, or containing any error or omission which is due to an error or omission in data supplied to us by other parties.



Mott MacDonald NY Inc.
1400 Broadway, 21st Floor
New York, NY 10018-0000
Certificate of Authorization #: 0017019

www.mottmacamericas.com

Client EMPIRE OFFSHORE WIND LLC.



Rev	Date	Drawn	Description	Ch'k'd	App'd
E	05/30/2023	JSR	RE-ISSUED FOR ARTICLE VII APP. (2 CIRCUIT)	KEK	MDN
D	04/04/2023	JSR	RE-ISSUED FOR ARTICLE VII APP. (2 CIRCUIT)	KEK	MDN
C	11/18/2022	SNP	RE-ISSUED FOR ARTICLE VII APP.	KEK	MDN
B	08/30/2022	SNP	RE-ISSUED FOR ARTICLE VII APP.	KEK	MDN
A	05/13/2022	SNP	ISSUED FOR ARTICLE VII APP.	KEK	MDN

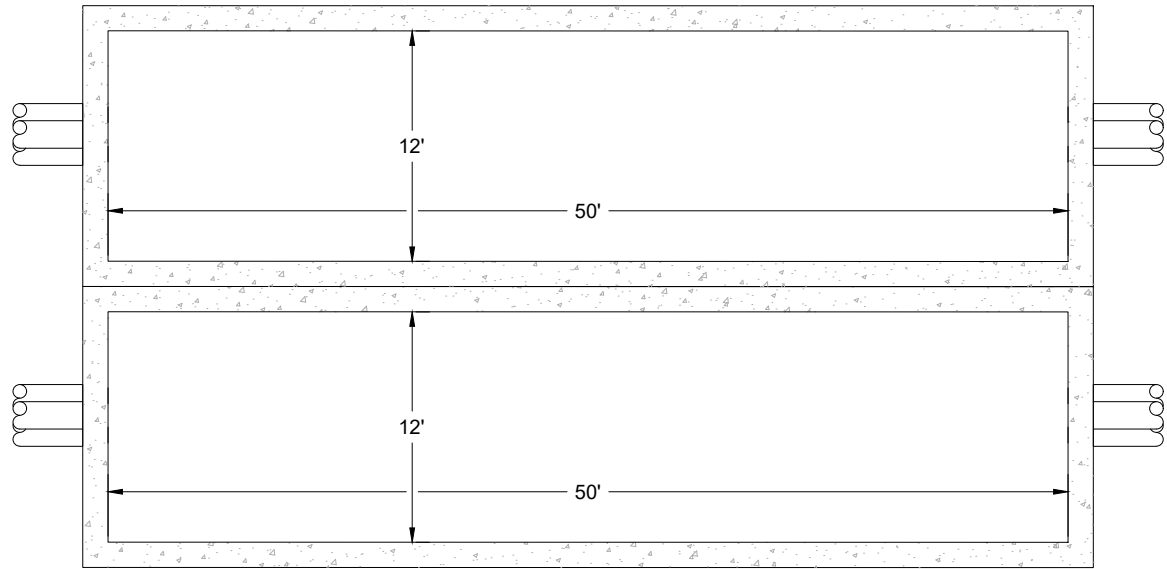
Project Number
505100904

B/O

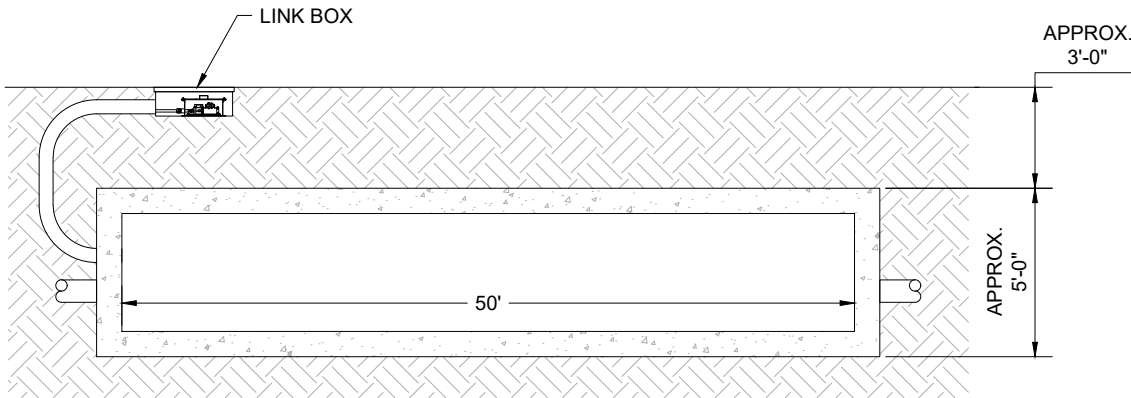
Total

Designed	JSR	Eng check	AP
Drawn	JSR	Coordination	KEK
Dwg check	JF	Approved	MDN
Scale at ANSI D N.T.S.	Status PRE	Rev E	Security STD
Drawing Number	C128		

Title
EMPIRE OFFSHORE WIND LLC.
EMPIRE WIND 2 PROJECT
CONSTRUCTION DETAILS
NASSAU COUNTY, NEW YORK
ISSUED FOR ARTICLE VII APPLICATION



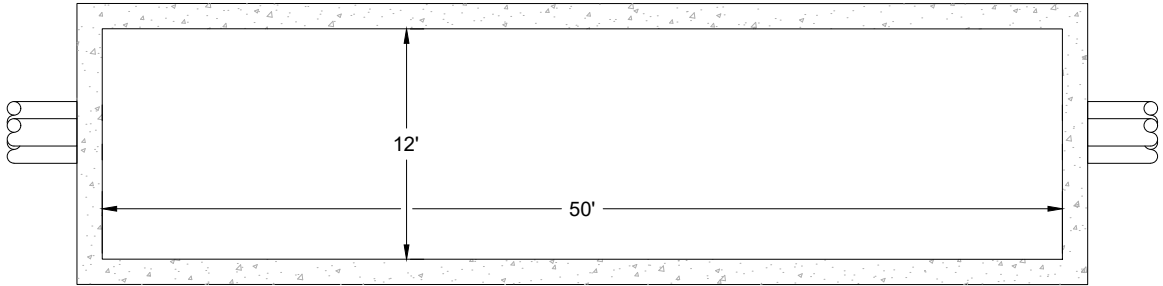
TYPICAL CABLE SPLICING VAULT
PLAN VIEW
N.T.S.



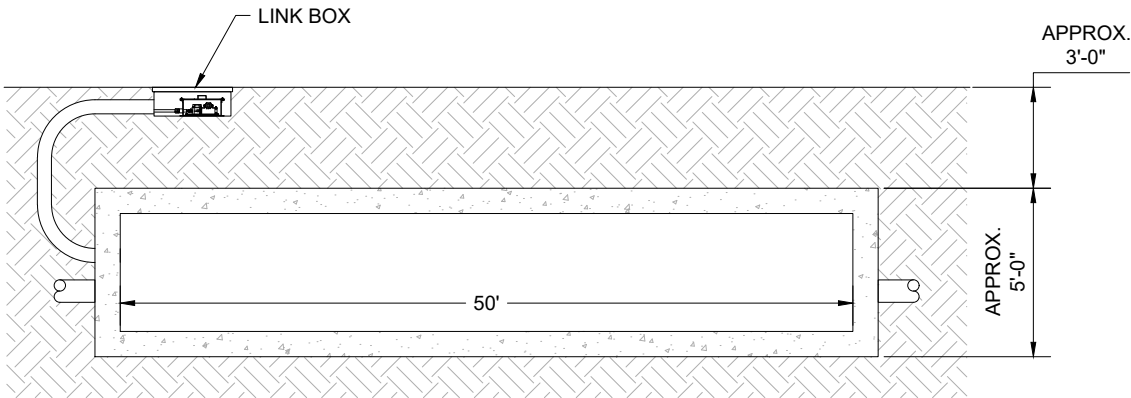
TYPICAL CABLE SPLICING VAULT
ELEVATION VIEW
N.T.S.

NOTE:
FOR THE JOINT BAY / SPLICE VAULT - 2 CIRCUIT, THERE MAY
BE A NEED FOR FIBER OPTIC HANDHOLE; REFER TO DETAIL "N"

N.T.S.
JOINT BAY / SPLICE VAULT - 2 CIRCUIT
BURIED H



TYPICAL CABLE SPLICING VAULT
PLAN VIEW
N.T.S.



TYPICAL CABLE SPLICING VAULT
ELEVATION VIEW
N.T.S.

NOTE:
FOR THE JOINT BAY / SPLICE VAULT - 1 CIRCUIT, THERE MAY
BE A NEED FOR FIBER OPTIC HANDHOLE; REFER TO DETAIL "N"

N.T.S.
JOINT BAY / SPLICE VAULT - 1 CIRCUIT
BURIED I

© Mott MacDonald

This document is issued for the party which commissioned it and for specific purposes connected with the captioned project only. It should not be relied upon by any other party or used for any other purpose. We accept no responsibility for the consequences of this document being relied upon by any other party, or being used for any other purpose, or containing any error or omission which is due to an error or omission in data supplied to us by other parties.



Mott MacDonald NY Inc.
1400 Broadway, 21st Floor
New York, NY 10018-0000
Certificate of Authorization #: 0017019

www.mottmacamericas.com

Client EMPIRE OFFSHORE WIND LLC.



Rev	Date	Drawn	Description	Ch'k'd	App'd
E	05/30/2023	JSR	RE-ISSUED FOR ARTICLE VII APP. (2 CIRCUIT)	KEK	MDN
D	04/04/2023	JSR	RE-ISSUED FOR ARTICLE VII APP. (2 CIRCUIT)	KEK	MDN
C	11/18/2022	SNP	RE-ISSUED FOR ARTICLE VII APP.	KEK	MDN
B	08/30/2022	SNP	RE-ISSUED FOR ARTICLE VII APP.	KEK	MDN
A	05/13/2022	SNP	ISSUED FOR ARTICLE VII APP.	KEK	MDN

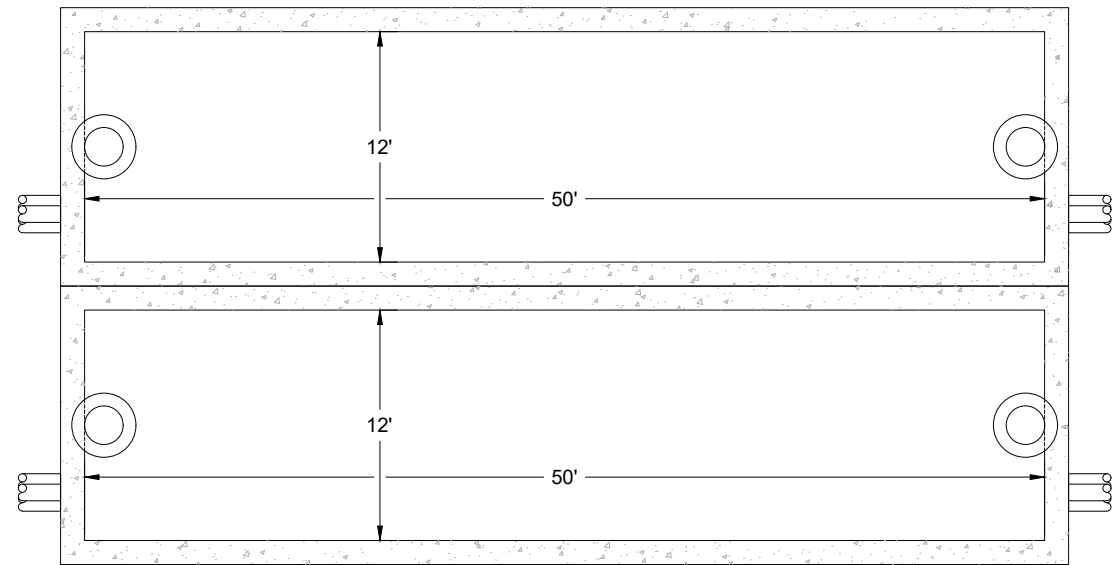
Project Number
505100904

B/O

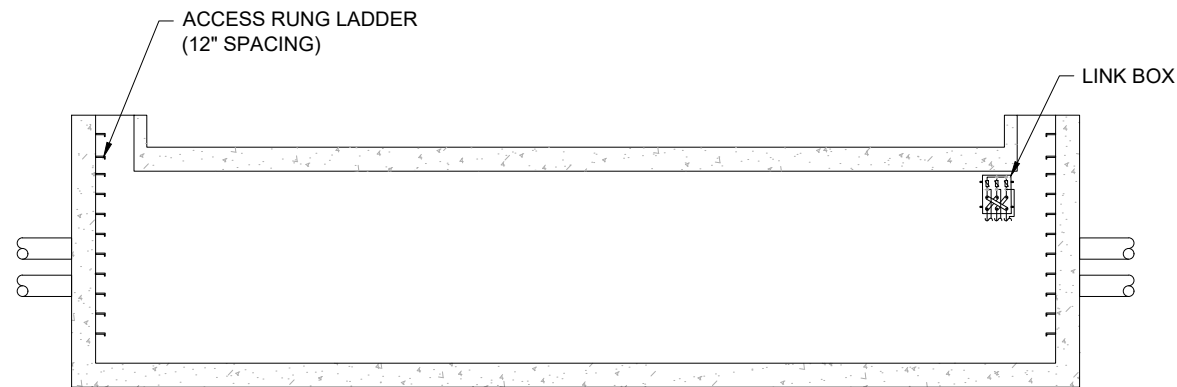
Total

Designed	JSR	Eng check	AP
Drawn	JSR	Coordination	KEK
Dwg check	JF	Approved	MDN
Scale at ANSI D N.T.S.	Status PRE	Rev E	Security STD
Drawing Number	C129		

Title
EMPIRE OFFSHORE WIND LLC.
EMPIRE WIND 2 PROJECT
CONSTRUCTION DETAILS
NASSAU COUNTY, NEW YORK
ISSUED FOR ARTICLE VII APPLICATION

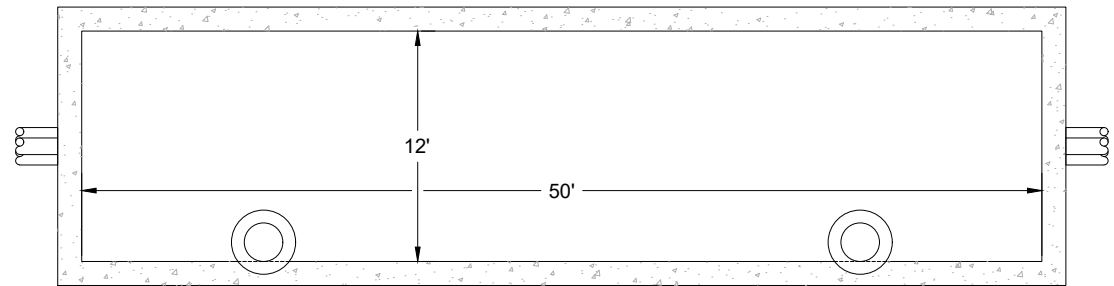


TYPICAL CABLE SPLICING VAULT
PLAN VIEW
N.T.S.

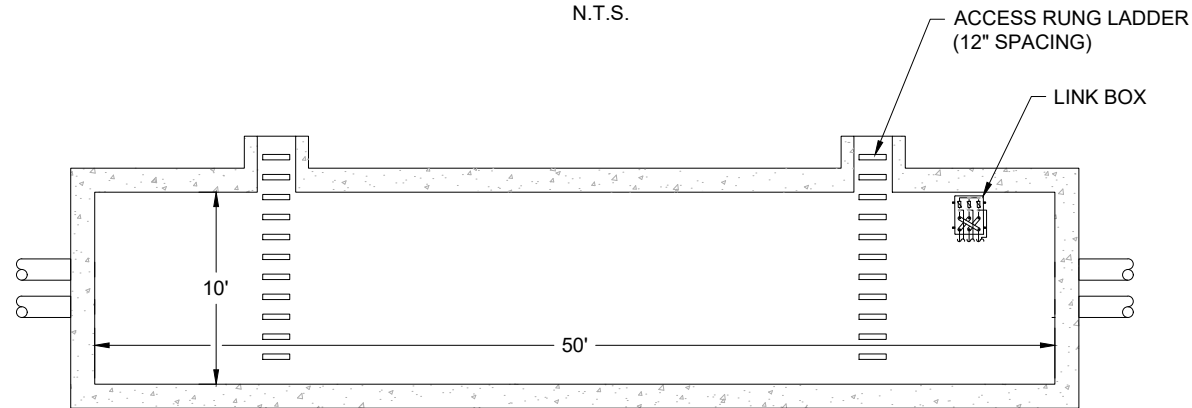


TYPICAL CABLE SPLICING VAULT
ELEVATION VIEW
N.T.S.

N.T.S.
JOINT BAY / SPLICE VAULT - 2 CIRCUIT J
MANHOLE ALTERNATIVE



TYPICAL CABLE SPLICING VAULT
PLAN VIEW
N.T.S.



TYPICAL CABLE SPLICING VAULT
ELEVATION VIEW
N.T.S.

N.T.S.
JOINT BAY / SPLICE VAULT - 1 CIRCUIT K
MANHOLE ALTERNATIVE

© Mott MacDonald

This document is issued for the party which commissioned it and for specific purposes connected with the captioned project only. It should not be relied upon by any other party or used for any other purpose. We accept no responsibility for the consequences of this document being relied upon by any other party, or being used for any other purpose, or containing any error or omission which is due to an error or omission in data supplied to us by other parties.

M

M

MOTT
MACDONALD

Mott MacDonald NY Inc.
1400 Broadway, 21st Floor
New York, NY 10018-0000
Certificate of Authorization #: 0017019

www.mottmacamericas.com

Client EMPIRE OFFSHORE WIND LLC.



E	05/30/2023	JSR	RE-ISSUED FOR ARTICLE VII APP. (2 CIRCUIT)	KEK	MDN
D	04/04/2023	JSR	RE-ISSUED FOR ARTICLE VII APP. (2 CIRCUIT)	KEK	MDN
C	11/18/2022	SNP	RE-ISSUED FOR ARTICLE VII APP.	KEK	MDN
B	08/30/2022	SNP	RE-ISSUED FOR ARTICLE VII APP.	KEK	MDN
A	05/13/2022	SNP	ISSUED FOR ARTICLE VII APP.	KEK	MDN
Rev	Date	Drawn	Description	Ch'k'd	App'd

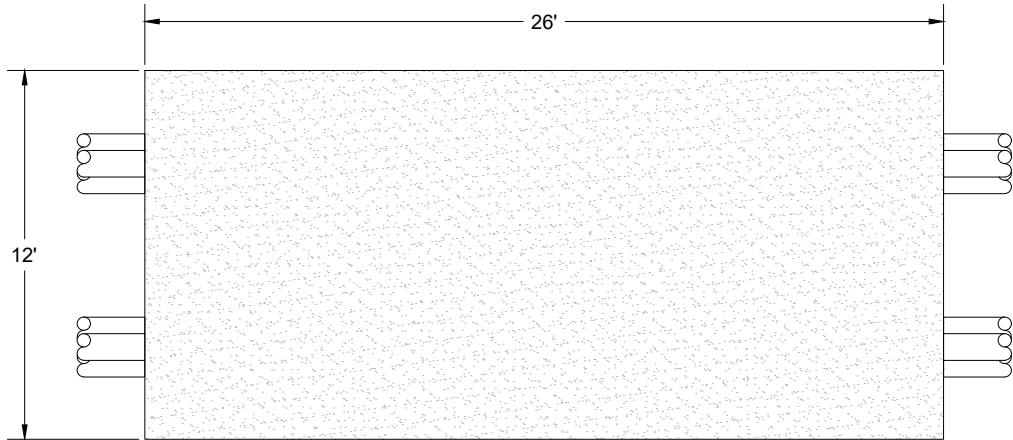
Project Number
505100904

B/O

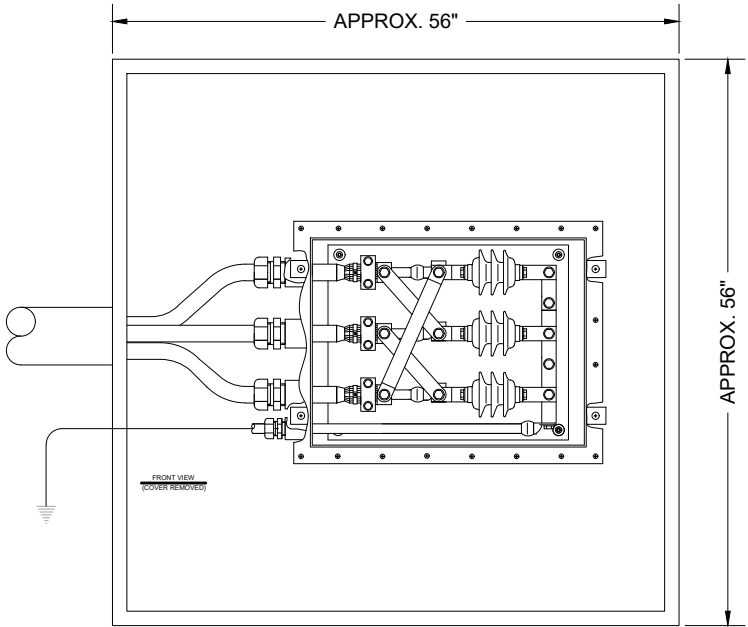
Total

Designed	JSR		Eng check	AP	
Drawn	JSR		Coordination	KEK	
Dwg check	JF		Approved	MDN	
Scale at ANSI D N.T.S.	Status PRE	Rev E	Security STD		
Drawing Number	C130				

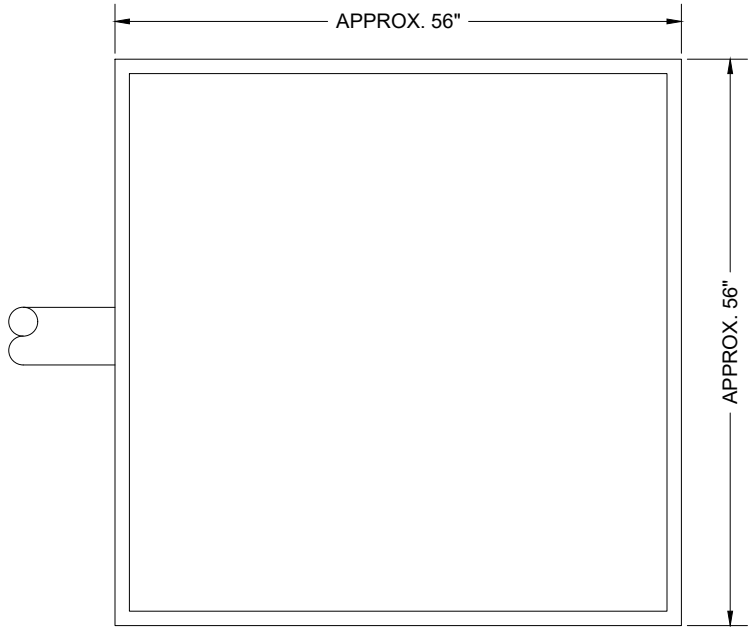
Title
EMPIRE OFFSHORE WIND LLC.
EMPIRE WIND 2 PROJECT
CONSTRUCTION DETAILS
NASSAU COUNTY, NEW YORK
ISSUED FOR ARTICLE VII APPLICATION



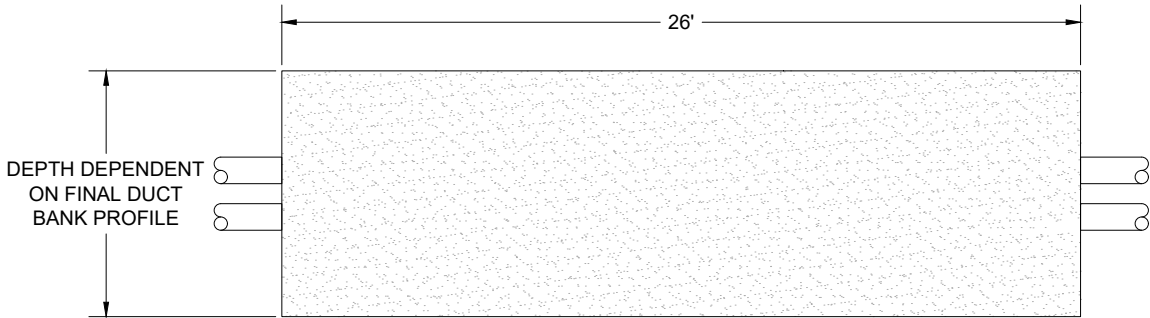
TEMPORARY AUXILIARY PIT
PLAN VIEW
N.T.S.



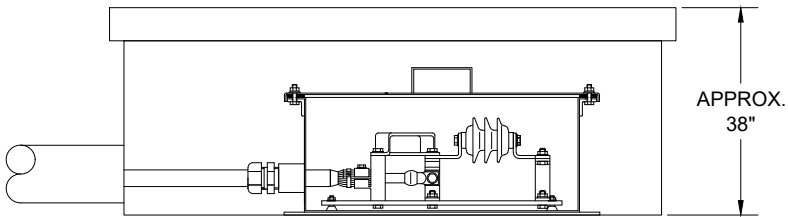
LINK BOX HANDHOLE
PLAN VIEW
N.T.S.



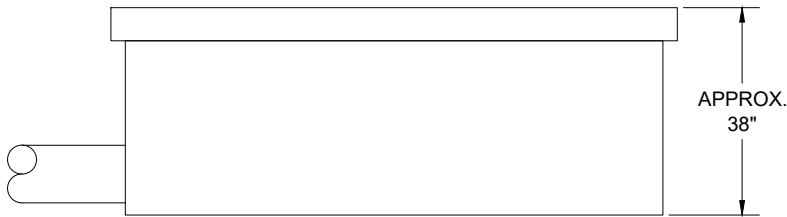
FIBER OPTIC HANDHOLE
PLAN VIEW
N.T.S.



TEMPORARY AUXILIARY PIT
ELEVATION VIEW
N.T.S.



LINK BOX HANDHOLE
ELEVATION VIEW
N.T.S.



FIBER OPTIC HANDHOLE
ELEVATION VIEW
N.T.S.

N.T.S.
TEMPORARY AUXILIARY PIT
2 CIRCUITS



N.T.S.
LINK BOX HANDHOLE
(APPROX. 56"W x 56"L x 38"D)



N.T.S.
FIBER OPTIC HANDHOLE
(APPROX. 56"W x 56"L x 38"D)



© Mott MacDonald
This document is issued for the party which commissioned it and for specific purposes connected with the captioned project only. It should not be relied upon by any other party or used for any other purpose. We accept no responsibility for the consequences of this document being relied upon by any other party, or being used for any other purpose, or containing any error or omission which is due to an error or omission in data supplied to us by other parties.

M

M

MOTT
MACDONALD

Mott MacDonald NY Inc.
1400 Broadway, 21st Floor
New York, NY 10018-0000
Certificate of Authorization #: 0017019

www.mottmacamericas.com

Client EMPIRE OFFSHORE WIND LLC.

Rev	Date	Drawn	Description	Ch'k'd	App'd
E	05/30/2023	JSR	RE-ISSUED FOR ARTICLE VII APP. (2 CIRCUIT)	KEK	MDN
D	04/04/2023	JSR	RE-ISSUED FOR ARTICLE VII APP. (2 CIRCUIT)	KEK	MDN
C	11/18/2022	SNP	RE-ISSUED FOR ARTICLE VII APP.	KEK	MDN
B	08/30/2022	SNP	RE-ISSUED FOR ARTICLE VII APP.	KEK	MDN
A	05/13/2022	SNP	ISSUED FOR ARTICLE VII APP.	KEK	MDN

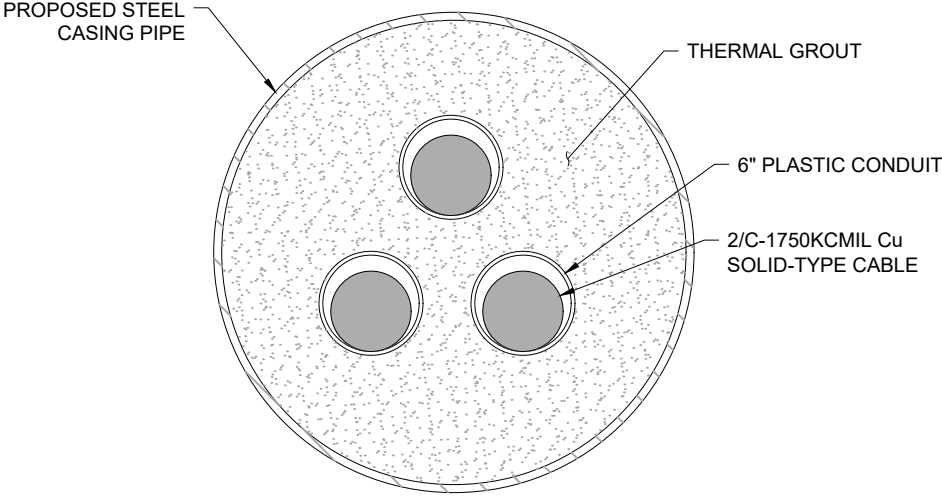
Project Number
505100904

B/O

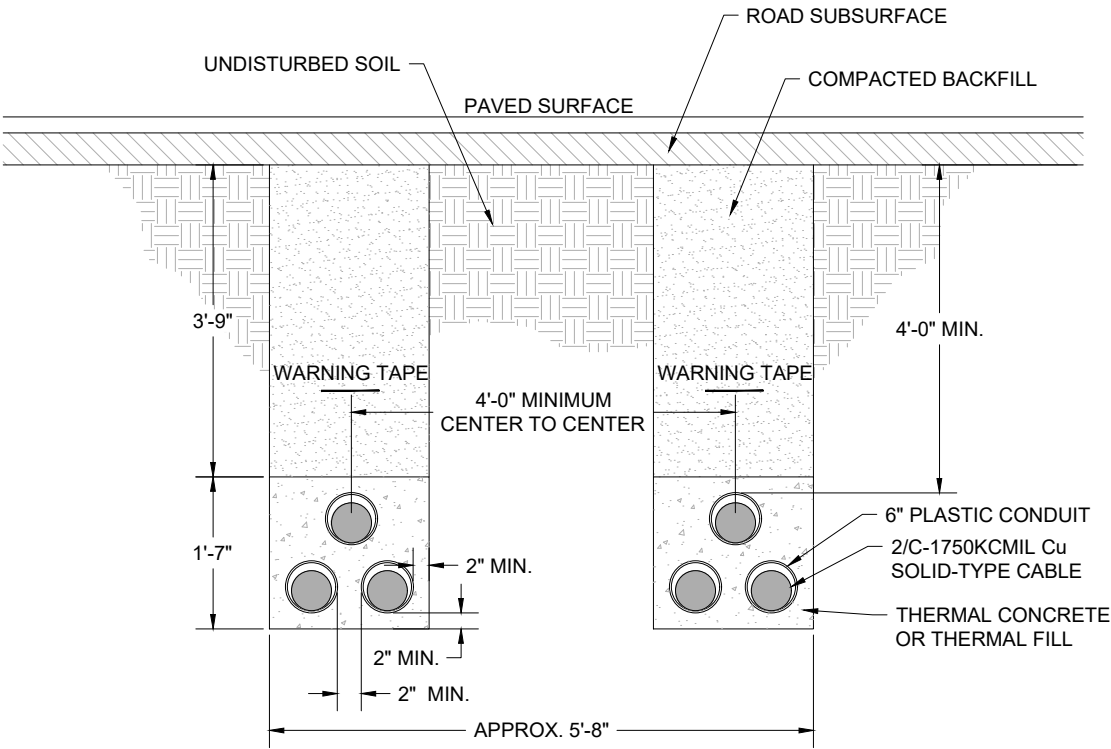
Total

Designed	JSR	Eng check	AP
Drawn	JSR	Coordination	KEK
Dwg check	JF	Approved	MDN
Scale at ANSI D N.T.S.	Status PRE	Rev E	Security STD
Drawing Number		C131	

EMPIRE OFFSHORE WIND LLC.
EMPIRE WIND 2 PROJECT
CONSTRUCTION DETAILS
NASSAU COUNTY, NEW YORK
ISSUED FOR ARTICLE VII APPLICATION



N.T.S.
AUGER BORE SECTION - 1 CIRCUIT (138kV) O
SYSTEM INTERCONNECTION CABLES



N.T.S.
DUCT BANK SECTION - 2 CIRCUITS (138kV) P
SYSTEM INTERCONNECTION CABLES

© Mott MacDonald

This document is issued for the party which commissioned it and for specific purposes connected with the captioned project only. It should not be relied upon by any other party or used for any other purpose. We accept no responsibility for the consequences of this document being relied upon by any other party, or being used for any other purpose, or containing any error or omission which is due to an error or omission in data supplied to us by other parties.



Mott MacDonald NY Inc.
1400 Broadway, 21st Floor
New York, NY 10018-0000
Certificate of Authorization #: 0017019

www.mottmacamericas.com

Client EMPIRE OFFSHORE WIND LLC.



Rev	Date	Drawn	Description	Ch'k'd	App'd
E	05/30/2023	JSR	RE-ISSUED FOR ARTICLE VII APP. (2 CIRCUIT)	KEK	MDN
D	04/07/2023	JSR	RE-ISSUED FOR ARTICLE VII APP. (2 CIRCUIT)	KEK	MDN
C	11/18/2022	SNP	RE-ISSUED FOR ARTICLE VII APP.	KEK	MDN
B	08/30/2022	SNP	RE-ISSUED FOR ARTICLE VII APP.	KEK	MDN
A	05/13/2022	SNP	ISSUED FOR ARTICLE VII APP.	KEK	MDN

Project Number
505100904

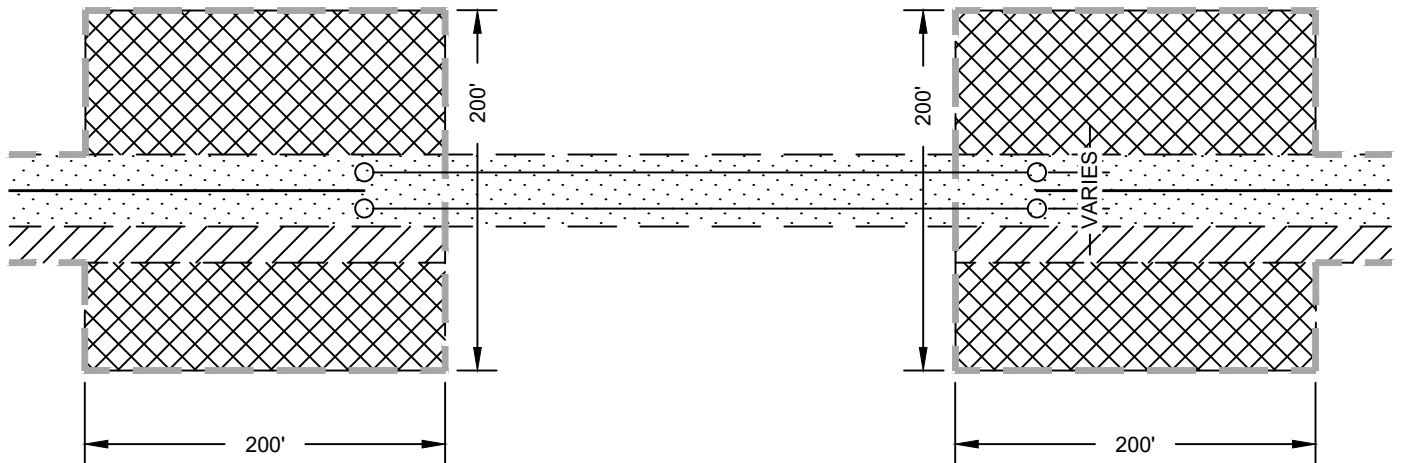
B/O

Total

Designed	JSR	Eng check	AP
Drawn	JSR	Coordination	KEK
Dwg check	JF	Approved	MDN
Scale at ANSI D N.T.S.	Status PRE	Rev E	Security STD
Drawing Number		C132	






Title
EMPIRE OFFSHORE WIND LLC.
EMPIRE WIND 2 PROJECT
CONSTRUCTION DETAILS
NASSAU COUNTY, NEW YORK
ISSUED FOR ARTICLE VII APPLICATION

C:\USERS\WAT73657\APPDATA\LOCAL\PROJECT\WIS\WORKDIR\MOTT-USE-PW-07D0557654



PLAN VIEW
N.T.S.

LEGEND

-  PROPOSED ELECTRICAL LINE
-  LIMIT OF DISTURBANCE
-  TEMPORARY WORKSPACE
-  ADDITIONAL TEMPORARY WORKSPACE
-  PROPOSED PERMANENT EASEMENT

© Mott MacDonald

THIS DOCUMENT IS ISSUED FOR THE PARTY WHICH COMMISSIONED IT AND FOR SPECIFIC PURPOSES CONNECTED WITH THE CAPTIONED PROJECT ONLY. IT SHOULD NOT BE RELIED UPON BY ANY OTHER PARTY OR USED FOR ANY OTHER PURPOSE. WE ACCEPT NO RESPONSIBILITY FOR THE CONSEQUENCES OF THIS DOCUMENT BEING RELIED UPON BY ANY OTHER PARTY, OR BEING USED FOR ANY OTHER PURPOSE, OR CONTAINING ANY ERROR OR OMISSION WHICH IS DUE TO AN ERROR OR OMISSION IN DATA SUPPLIED TO US BY OTHER PARTIES.

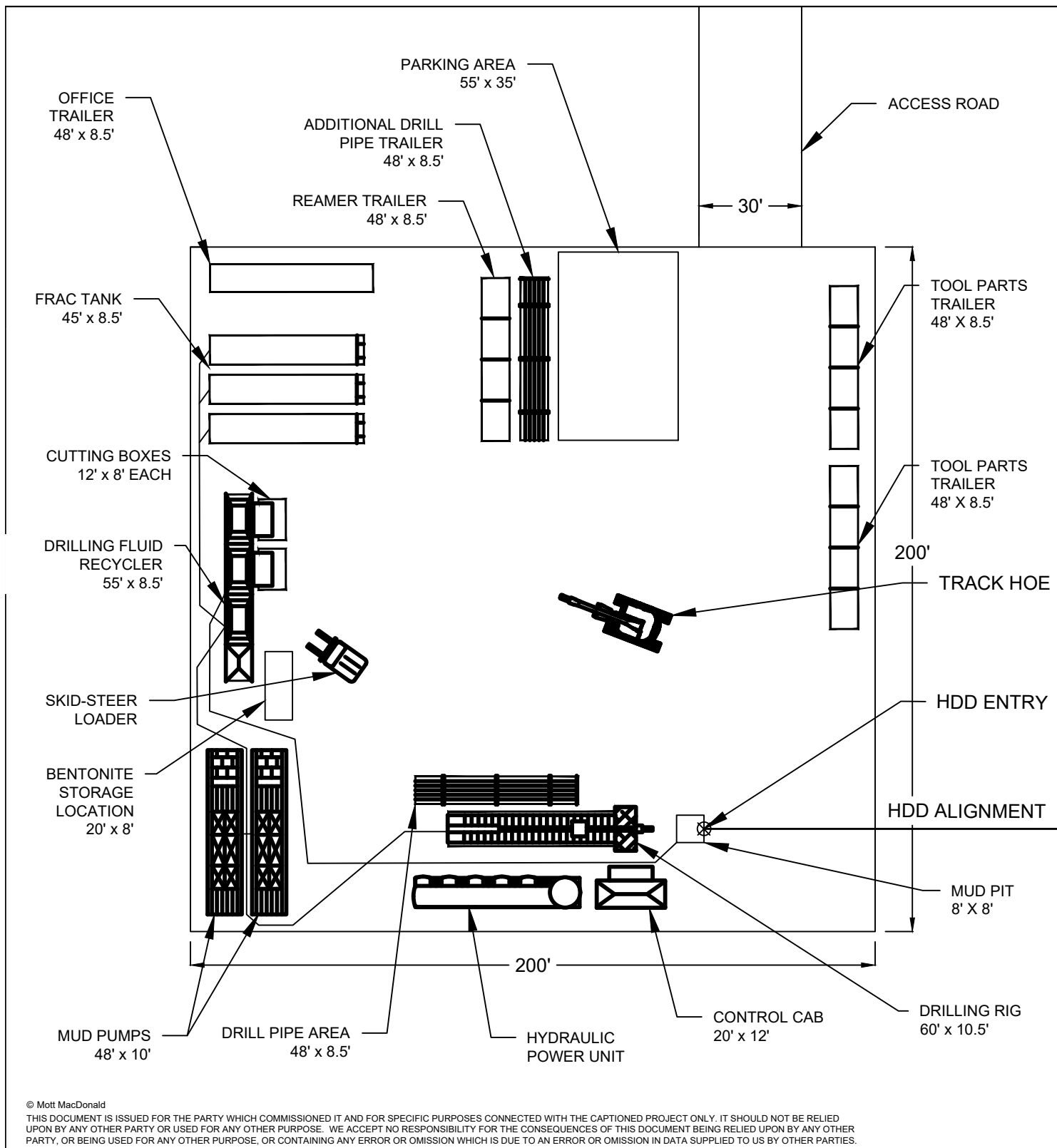
Title

EMPIRE OFFSHORE WIND LLC.
EMPIRE WIND 2 PROJECT
TYPICAL HDD WORKSPACE SKETCH
NASSAU COUNTY, NEW YORK
ISSUED FOR ARTICLE VII APPLICATION



Mott MacDonald NY Inc.
1400 Broadway, 21st Floor
New York, NY 10018-0000
Certificate of Authorization #: 0017019

Date	Drawn	Checked	Approved	Scale at ANSI A	Drawing Number	Status	Rev
04/07/2023	DOW	KEK	MDN	NTS	TYPICAL HDD WORKSPACE SKETCH	PRE	B



© Mott MacDonald

THIS DOCUMENT IS ISSUED FOR THE PARTY WHICH COMMISSIONED IT AND FOR SPECIFIC PURPOSES CONNECTED WITH THE CAPTIONED PROJECT ONLY. IT SHOULD NOT BE RELIED UPON BY ANY OTHER PARTY OR USED FOR ANY OTHER PURPOSE. WE ACCEPT NO RESPONSIBILITY FOR THE CONSEQUENCES OF THIS DOCUMENT BEING RELIED UPON BY ANY OTHER PARTY, OR BEING USED FOR ANY OTHER PURPOSE, OR CONTAINING ANY ERROR OR OMISSION WHICH IS DUE TO AN ERROR OR OMISSION IN DATA SUPPLIED TO US BY OTHER PARTIES.

Title

EMPIRE OFFSHORE WIND LLC.
EMPIRE WIND 2 PROJECT
TYPICAL HDD LAYOUT (LARGE RIG
SETUP 200'x200' WORKSPACE
NASSAU COUNTY, NEW YORK
ISSUED FOR ARTICLE VII APPLICATION

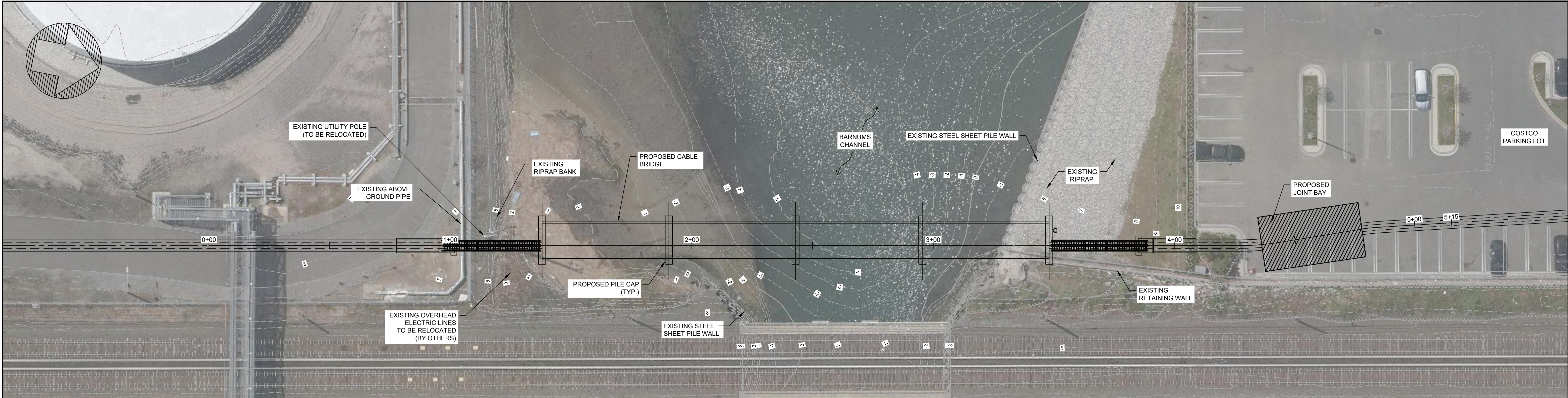
M

M

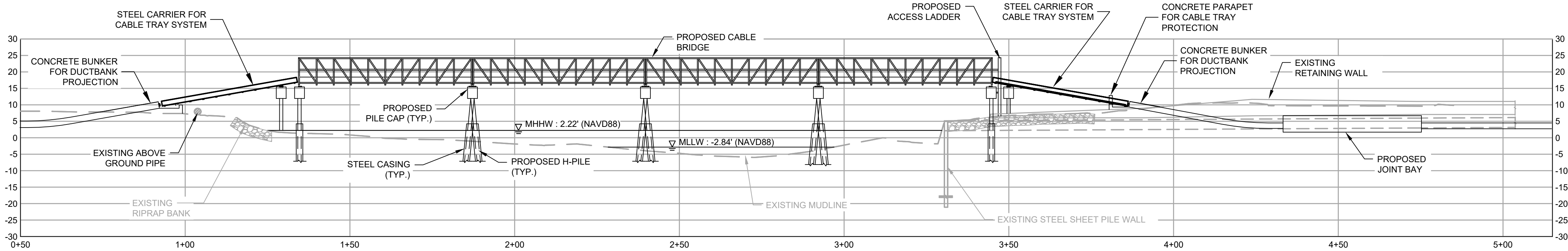
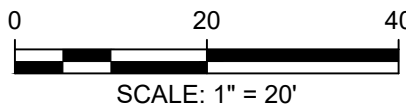
**MOTT
MACDONALD**

Mott MacDonald NY Inc.
1400 Broadway, 21st Floor
New York, NY 10018-0000
Certificate of Authorization #: 0017019

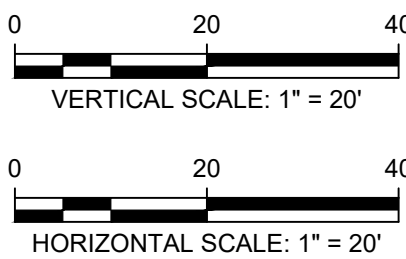
Date	Drawn	Checked	Approved	Scale at ANSI A	Drawing Number	Status	Rev
04/07/2023	DOW	KEK	MDN	1"=40'	TYPICAL HDD LAYOUT (LARGE RIG SETUP)	PRE	B



CABLE BRIDGE CROSSING - BARNUMS CHANNEL
PLAN VIEW
SCALE: 1" = 20'



CABLE BRIDGE CROSSING - BARNUMS CHANNEL
PROFILE VIEW
SCALE: 1" = 20'



- NOTES:
1. LOCATION AND DEPTH OF ALL UTILITIES ARE TO BE FIELD VERIFIED.
 2. PROPOSED CABLE ALIGNMENTS SHOWN MAY BE ADJUSTED DUE TO UNFORESEEN CONDITIONS.
 3. MOTT MACDONALD HAS NOT CONDUCTED CIVIL SURVEYS WITHIN THE AREA SHOWN.
 4. THE SURVEYED CONTOURS (ONSHORE) AND IMAGERY SHOWN ARE FROM AN AERIAL FLIGHT FLOWN ON 04/23/2021 PROVIDED BY ROBINSON AERIAL.
 5. PROPERTY LINES SHOWN ON THIS MAP ARE TAX MAP GRADE AND NOT A RESULT OF A BOUNDARY SURVEY.
 6. BATHYMETRIC DATA WITHIN BARNUMS CHANNEL IS FROM PUBLIC SOURCES (NOAA).
 7. HORIZONTAL DATUM IS NAD83, NEW YORK STATE PLANE, LONG ISLAND US FOOT. VERTICAL DATUM IS NAVD1988.
 8. CONVERSION FOR VERTICAL DATUM IS NAVD83 + 2.84' = MLLW.
 9. DRAWING IS FOR PERMITTING PURPOSES ONLY, NOT FOR CONSTRUCTION.
 10. BULKHEAD TIP ELEVATION IS FROM BULKHEAD REPAIR WORK FOR COSTCO OF OCEANSIDE PLAN SET, SHEET BW302.

© Mott MacDonald
This document is issued for the party which commissioned it and for specific purposes connected with the captioned project only. It should not be relied upon by any other party or used for any other purpose. We accept no responsibility for the consequences of this document being relied upon by any other party, or being used for any other purpose, or containing any error or omission which is due to an error or omission in data supplied to us by other parties.

M

M

MOTT
MACDONALD

Mott MacDonald NY Inc.
1400 Broadway, 21st Floor
New York, NY 10018-0000
Certificate of Authorization #: 0017019

equinor

www.mottmacamericas.com

Client EMPIRE OFFSHORE WIND LLC.

B	05/04/2023	DOW	RE-ISSUED FOR ARTICLE VII APP. (2 CIRCUIT)	MMT	MWC
A	02/07/2022	DOW	ISSUED FOR ARTICLE VII APPLICATION	MMT	MWC
Rev	Date	Drawn	Description	Ch'k'd	App'd

Project Number
505100904

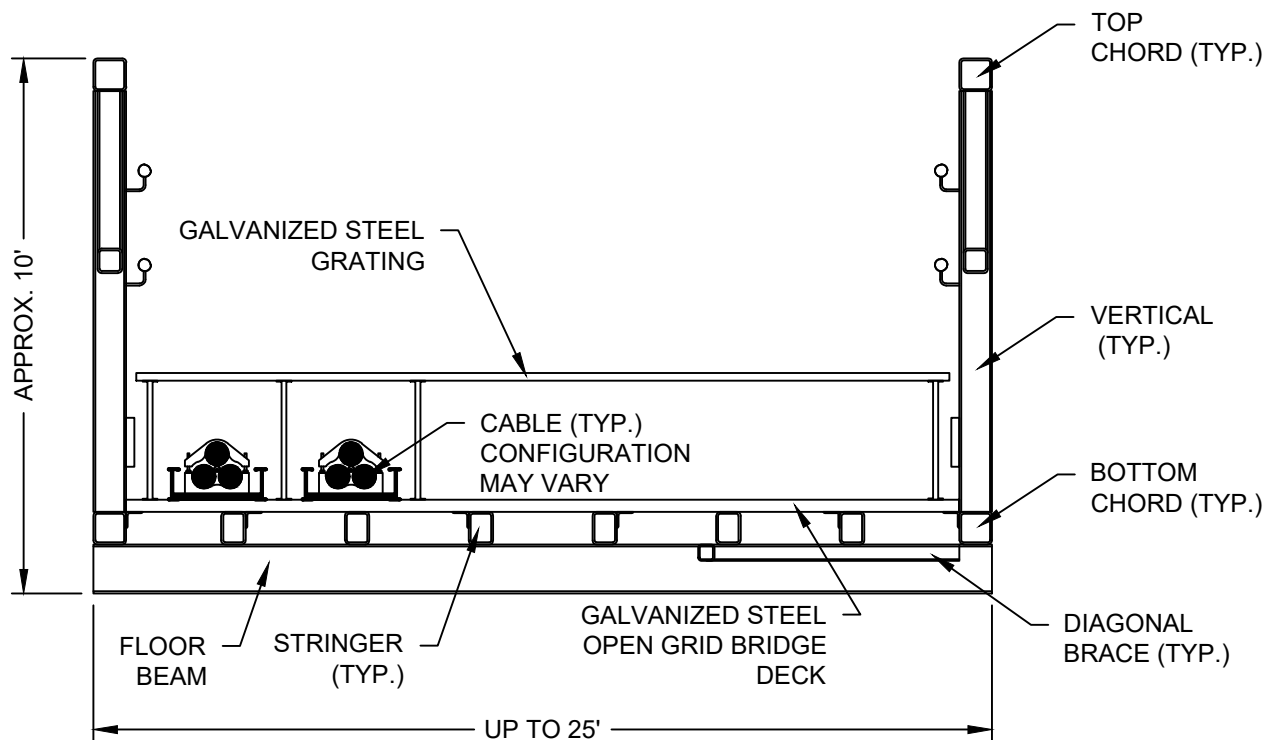
B/O

Total

Designed	MDN	Eng check	MDN
Drawn	LF	Coordination	KEK
Dwg check	KEK	Approved	MDN
Scale at ANSI D As Shown	Status PRE	Rev B	Security STD
Drawing Number BARNUMS CHANNEL CABLE BRIDGE			

EMPIRE OFFSHORE WIND LLC.
EMPIRE WIND 2 PROJECT
BARNUMS CHANNEL CABLE BRIDGE
PLAN AND PROFILE
NASSAU COUNTY, NEW YORK
ISSUED FOR ARTICLE VII APPLICATION

C:\P\WORKING\06591448\EW2_BRIDGE_GENERAL PLAN AND ELEVATION_ARTICLE VII.DWG
SAVE DATE/TIME: 5/8/2023 11:18:24 AM



CABLE BRIDGE SUPERSTRUCTURE
TYPICAL SECTION
 N.T.S.

© Mott MacDonald

THIS DOCUMENT IS ISSUED FOR THE PARTY WHICH COMMISSIONED IT AND FOR SPECIFIC PURPOSES CONNECTED WITH THE CAPTIONED PROJECT ONLY. IT SHOULD NOT BE RELIED UPON BY ANY OTHER PARTY OR USED FOR ANY OTHER PURPOSE. WE ACCEPT NO RESPONSIBILITY FOR THE CONSEQUENCES OF THIS DOCUMENT BEING RELIED UPON BY ANY OTHER PARTY, OR BEING USED FOR ANY OTHER PURPOSE, OR CONTAINING ANY ERROR OR OMISSION WHICH IS DUE TO AN ERROR OR OMISSION IN DATA SUPPLIED TO US BY OTHER PARTIES.

Title
**EMPIRE OFFSHORE WIND LLC.
 EMPIRE WIND 2 PROJECT
 BARNUM CHANNEL CABLE BRIDGE
 TYPICAL SECTION
 ISSUED FOR ARTICLE VII APPLICATION**



Mott MacDonald NY Inc.
 111 Wood Avenue South
 Iselin, NJ 08830-4112
 Certificate of Authorization #: 0017019

Date	Drawn	Checked	Approved	Scale at ANSI A	Drawing Number	Status	Rev
04/07/2022	DOW	KEK	MDN	As Shown	BARNUM CHANNEL CABLE BRIDGE TYPICAL SECTION	PRE	B