

LEGEND - PROPOSED

- 200' STATION
- MILE POST
- 345 kV DUCT BANK CENTERLINE (2 CIRCUITS - EXPORT)
- 345 kV DUCT BANK CENTERLINE (2 CIRCUITS - INTERCONNECTION)
- 345 kV DUCT BANK CENTERLINE (1 CIRCUIT - EXPORT)
- 345 kV DUCT BANK CENTERLINE (1 CIRCUIT - INTERCONNECTION)
- 138 kV SYSTEM INTERCONNECTION DUCT BANK CENTERLINE (1 CIRCUIT)

- POI FENCE
- HORIZONTAL AUGER BORE (TRENCHLESS CROSSING)
- HORIZONTAL DIRECTIONAL DRILL (TRENCHLESS CROSSING)
- JOINT BAY
- TRANSITION VAULT
- TEMPORARY AUXILIARY PIT
- CABLE BRIDGE AND BRIDGE TRANSITION AREA
- SUBSTATION

LEGEND - EXISTING

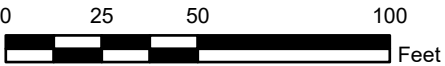
- 2' CONTOUR
- PUBLIC CONTOUR BOUNDARY
- PROPERTY LINE*
- JURISDICTIONAL BOUNDARY**

*ASSESSOR'S PARCEL NO. (APN) SHOWN WITHIN PROPERTY LINE
**SOURCE NY GIS CLEARINGHOUSE

NOTES

- EXISTING UTILITIES NOT SHOWN.
- DUCT BANK SHALL MAINTAIN MINIMUM DEPTH OF COVER OF 3 FT.
- LOCATION OF ALIGNMENT, JOINT BAYS, AND TRANSITION VAULTS SUBJECT TO CHANGE DURING DETAILED DESIGN PHASE.
- THE SURVEYED CONTOURS AND IMAGERY SHOWN ARE FROM AN AERIAL FLIGHT FLOWN ON 04/23/2021 PROVIDED BY ROBINSON AERIAL.
- BATHYMETRIC DATA IS FROM PUBLIC SOURCES (NOAA).
- PROPERTY LINES SHOWN ON THIS MAP ARE TAX MAP GRADE AND NOT A RESULT OF A BOUNDARY SURVEY.
- HORIZONTAL DATUM IS NAD83, NEW YORK STATE PLANE, LONG ISLAND US FOOT. VERTICAL DATUM IS NAVD1988.
- DRAWINGS ARE FOR PERMITTING PURPOSES ONLY, NOT FOR CONSTRUCTION.

PLAN SCALE



M M
MOTT
MACDONALD

Mott MacDonald NY Inc.
1400 Broadway, 21st Floor
New York, NY 10018-0000
Certificate of Authorization #: 0017019

© Mott MacDonald
This document is issued for the party which commissioned it and for specific purposes connected with the captioned project only. It should not be relied upon by any other party or used for any other purpose. We accept no responsibility for the consequences of this document being relied upon by any other party, or being used for any other purpose, or containing any error or omission which is due to an error or omission in data supplied to us by other parties

Client:

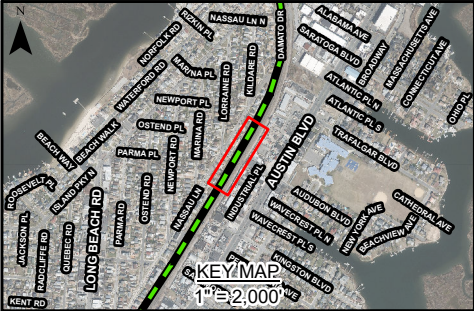
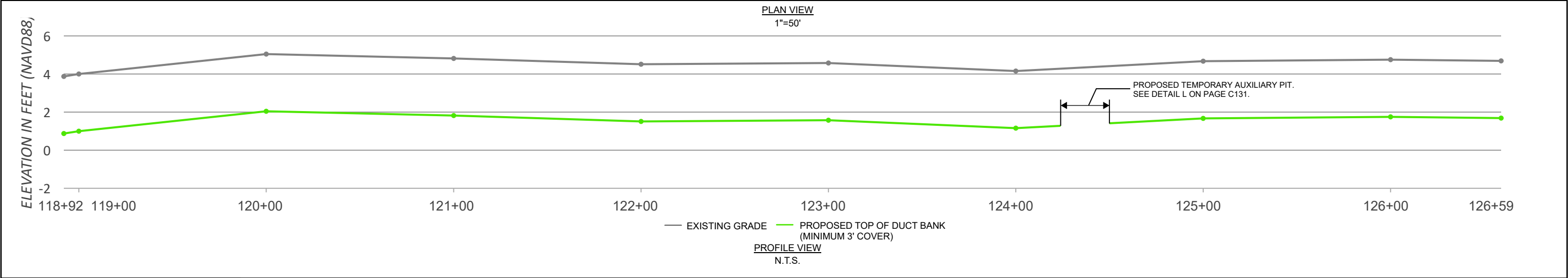
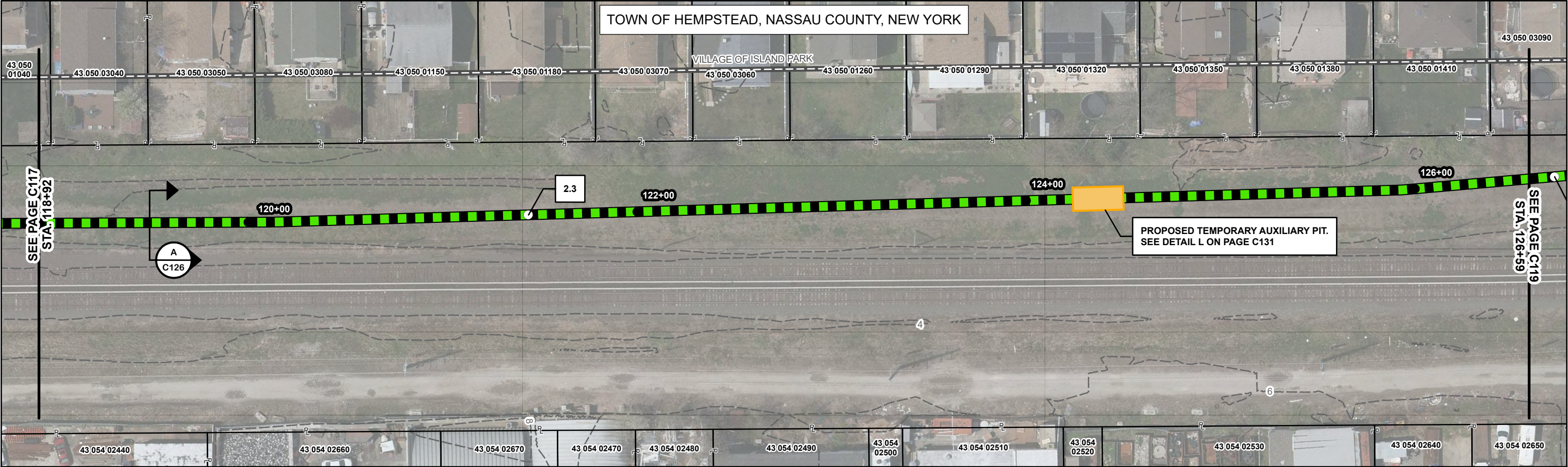
E	05/30/2023	SNP	RE-ISSUED FOR ARTICLE VII APP.	KEK	MDN
D	04/04/2023	SNP	RE-ISSUED FOR ARTICLE VII APP. (2 CIRCUIT)	KEK	MDN
C	11/18/2022	SNP	RE-ISSUED FOR ARTICLE VII APP.	KEK	MDN
B	08/30/2022	SNP	RE-ISSUED FOR ARTICLE VII APP.	KEK	MDN
A	05/13/2022	SNP	ISSUED FOR ARTICLE VII APP.	KEK	MDN
Rev	Date	Drawn	Description	Ch'k'd	App'd

Project Number 505100001			B/O	Total
-----------------------------	--	--	-----	-------

D'gn'd	Eng Chk	Coord.	App'd	Security
Drawn	Coord.	App'd	Rev	STD
Dwg Chk	App'd	Rev	Rev	STD
Plan Scale 1" = 50'	Status PRE	Rev E	Security STD	
Drawing Number C117				

Title

EMPIRE OFFSHORE WIND LLC.
EMPIRE WIND 2 PROJECT
PLAN AND PROFILE
NASSAU COUNTY, NEW YORK
ISSUED FOR ARTICLE VII APPLICATION



LEGEND - PROPOSED

- 200' STATION
- MILE POST
- 345 kV DUCT BANK CENTERLINE (2 CIRCUITS - EXPORT)
- 345 kV DUCT BANK CENTERLINE (2 CIRCUITS - INTERCONNECTION)
- 345 kV DUCT BANK CENTERLINE (1 CIRCUIT - EXPORT)
- 345 kV DUCT BANK CENTERLINE (1 CIRCUIT - INTERCONNECTION)
- 138 kV SYSTEM INTERCONNECTION DUCT BANK CENTERLINE (1 CIRCUIT)

- POI FENCE
- HORIZONTAL AUGER BORE (TRENCHLESS CROSSING)
- HORIZONTAL DIRECTIONAL DRILL (TRENCHLESS CROSSING)
- JOINT BAY
- TRANSITION VAULT
- TEMPORARY AUXILIARY PIT
- CABLE BRIDGE AND BRIDGE TRANSITION AREA
- SUBSTATION

LEGEND - EXISTING

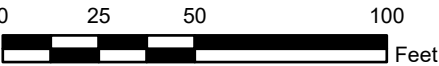
- 2' CONTOUR
- PUBLIC CONTOUR BOUNDARY
- PROPERTY LINE*
- JURISDICTIONAL BOUNDARY**

*ASSESSOR'S PARCEL NO. (APN) SHOWN WITHIN PROPERTY LINE
**SOURCE NY GIS CLEARINGHOUSE

NOTES

- EXISTING UTILITIES NOT SHOWN.
- DUCT BANK SHALL MAINTAIN MINIMUM DEPTH OF COVER OF 3 FT.
- LOCATION OF ALIGNMENT, JOINT BAYS, AND TRANSITION VAULTS SUBJECT TO CHANGE DURING DETAILED DESIGN PHASE.
- THE SURVEYED CONTOURS AND IMAGERY SHOWN ARE FROM AN AERIAL FLIGHT FLOWN ON 04/23/2021 PROVIDED BY ROBINSON AERIAL.
- BATHYMETRIC DATA IS FROM PUBLIC SOURCES (NOAA).
- PROPERTY LINES SHOWN ON THIS MAP ARE TAX MAP GRADE AND NOT A RESULT OF A BOUNDARY SURVEY.
- HORIZONTAL DATUM IS NAD83, NEW YORK STATE PLANE, LONG ISLAND US FOOT. VERTICAL DATUM IS NAVD1988.
- DRAWINGS ARE FOR PERMITTING PURPOSES ONLY, NOT FOR CONSTRUCTION.


PLAN SCALE

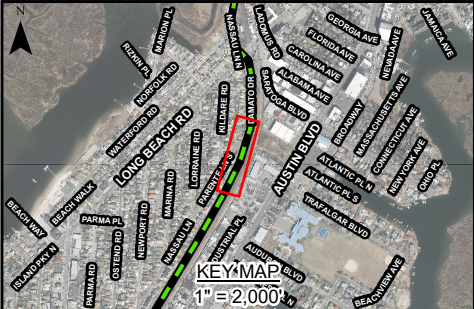
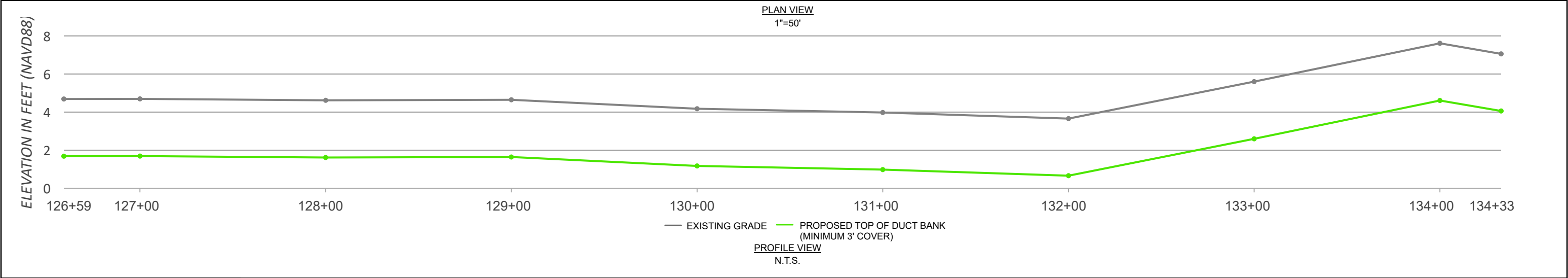
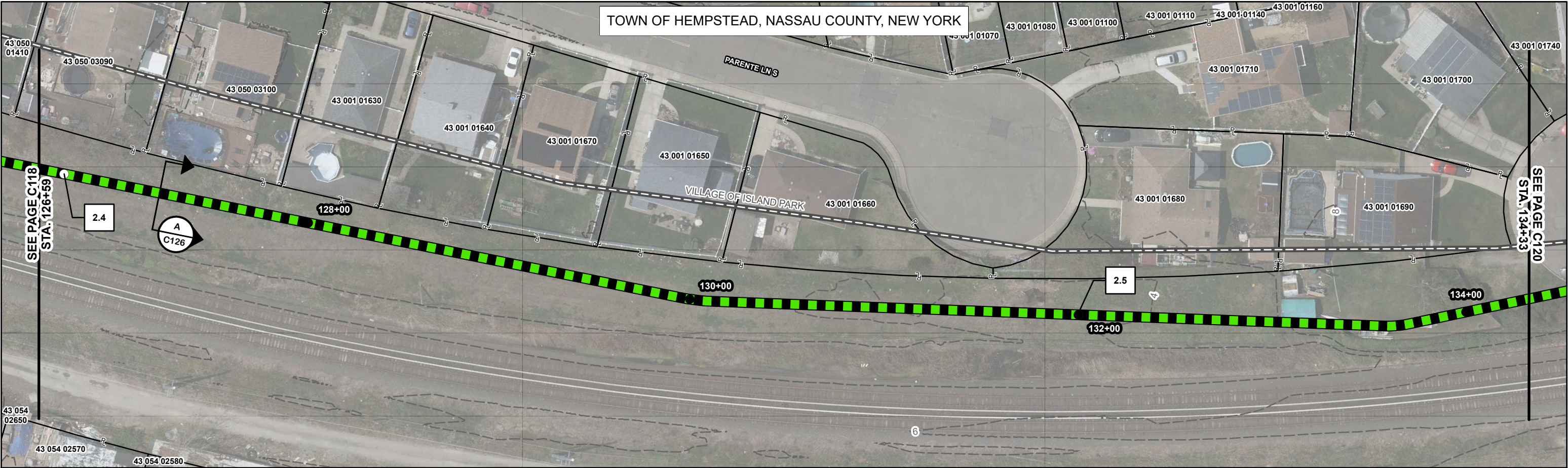


M
MOTT
MACDONALD

Mott MacDonald NY Inc.
1400 Broadway, 21st Floor
New York, NY 10018-0000
Certificate of Authorization #: 0017019

© Mott MacDonald
This document is issued for the party which commissioned it and for specific purposes connected with the captioned project only. It should not be relied upon by any other party or used for any other purpose. We accept no responsibility for the consequences of this document being relied upon by any other party, or being used for any other purpose, or containing any error or omission which is due to an error or omission in data supplied to us by other parties

<div>Client:</div> <div></div>	E	05/30/2023	SNP	RE-ISSUED FOR ARTICLE VII APP.	KEK	MDN	<div>_____ Date _____</div>	D'gn'd			Eng Chk			<div>Title</div> <div>EMPIRE OFFSHORE WIND LLC. EMPIRE WIND 2 PROJECT PLAN AND PROFILE NASSAU COUNTY, NEW YORK ISSUED FOR ARTICLE VII APPLICATION</div>
	D	04/04/2023	SNP	RE-ISSUED FOR ARTICLE VII APP. (2 CIRCUIT)	KEK	MDN		Drawn			Coord.			
	C	11/18/2022	SNP	RE-ISSUED FOR ARTICLE VII APP.	KEK	MDN		Dwg Chk			App'd			
	B	08/30/2022	SNP	RE-ISSUED FOR ARTICLE VII APP.	KEK	MDN		Plan Scale 1" = 50'	Status PRE	Rev E	Security STD			
	A	05/13/2022	SNP	ISSUED FOR ARTICLE VII APP.	KEK	MDN								
	Rev	Date	Drawn	Description	Ch'k'd	App'd								
	Project Number 505100001						B/O	Total	Drawing Number C118					



LEGEND - PROPOSED

- 200' STATION
- MILE POST
- 345 kV DUCT BANK CENTERLINE (2 CIRCUITS - EXPORT)
- 345 kV DUCT BANK CENTERLINE (2 CIRCUITS - INTERCONNECTION)
- 345 kV DUCT BANK CENTERLINE (1 CIRCUIT - EXPORT)
- 345 kV DUCT BANK CENTERLINE (1 CIRCUIT - INTERCONNECTION)
- 138 kV SYSTEM INTERCONNECTION DUCT BANK CENTERLINE (1 CIRCUIT)

- POI FENCE
- HORIZONTAL AUGER BORE (TRENCHLESS CROSSING)
- HORIZONTAL DIRECTIONAL DRILL (TRENCHLESS CROSSING)
- JOINT BAY
- TRANSITION VAULT
- TEMPORARY AUXILIARY PIT
- CABLE BRIDGE AND BRIDGE TRANSITION AREA
- SUBSTATION

LEGEND - EXISTING

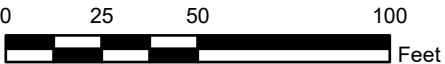
- 2' CONTOUR
- PUBLIC CONTOUR BOUNDARY
- PROPERTY LINE*
- JURISDICTIONAL BOUNDARY**

*ASSESSOR'S PARCEL NO. (APN) SHOWN WITHIN PROPERTY LINE
**SOURCE NY GIS CLEARINGHOUSE

NOTES

- EXISTING UTILITIES NOT SHOWN.
- DUCT BANK SHALL MAINTAIN MINIMUM DEPTH OF COVER OF 3 FT.
- LOCATION OF ALIGNMENT, JOINT BAYS, AND TRANSITION VAULTS SUBJECT TO CHANGE DURING DETAILED DESIGN PHASE.
- THE SURVEYED CONTOURS AND IMAGERY SHOWN ARE FROM AN AERIAL FLIGHT FLOWN ON 04/23/2021 PROVIDED BY ROBINSON AERIAL.
- BATHYMETRIC DATA IS FROM PUBLIC SOURCES (NOAA).
- PROPERTY LINES SHOWN ON THIS MAP ARE TAX MAP GRADE AND NOT A RESULT OF A BOUNDARY SURVEY.
- HORIZONTAL DATUM IS NAD83, NEW YORK STATE PLANE, LONG ISLAND US FOOT. VERTICAL DATUM IS NAVD1988.
- DRAWINGS ARE FOR PERMITTING PURPOSES ONLY, NOT FOR CONSTRUCTION.

PLAN SCALE



M
MOTT
MACDONALD

Mott MacDonald NY Inc.
1400 Broadway, 21st Floor
New York, NY 10018-0000
Certificate of Authorization #: 0017019



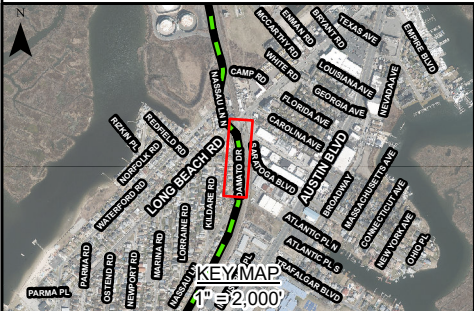
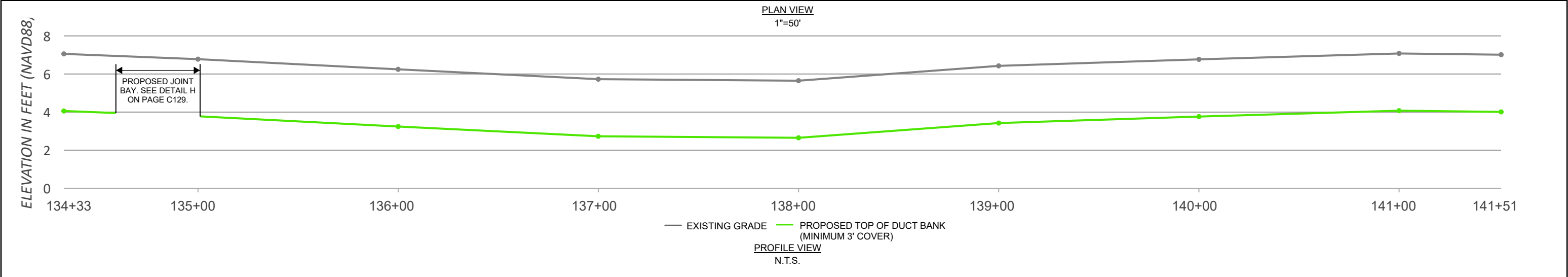
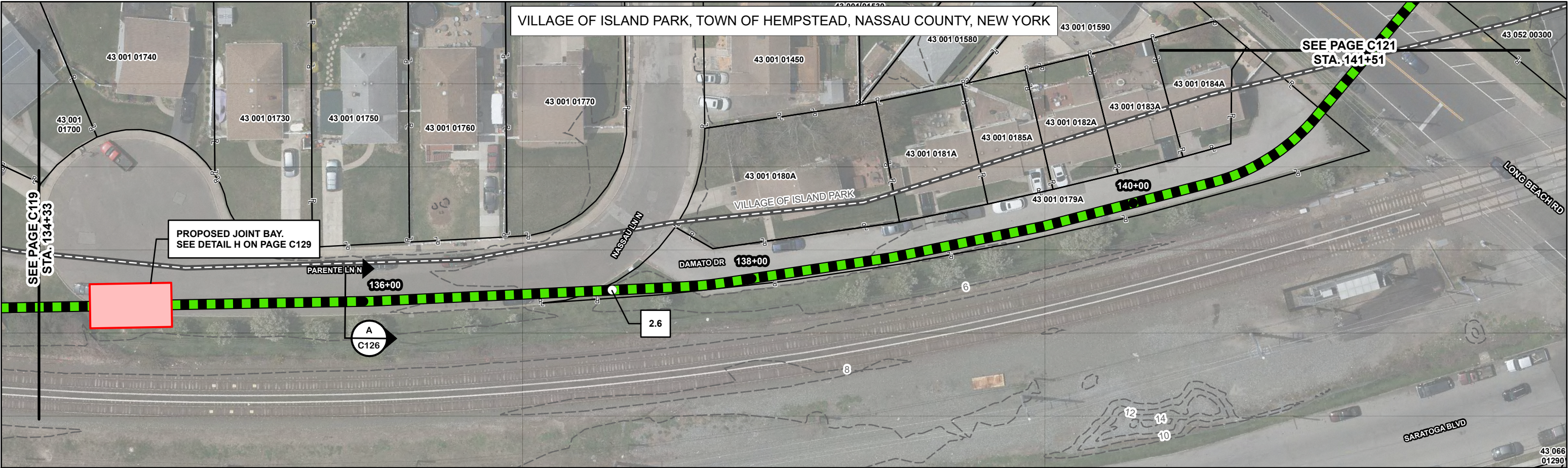
Client:

E	05/30/2023	SNP	RE-ISSUED FOR ARTICLE VII APP.	KEK	MDN
D	04/04/2023	SNP	RE-ISSUED FOR ARTICLE VII APP. (2 CIRCUIT)	KEK	MDN
C	11/18/2022	SNP	RE-ISSUED FOR ARTICLE VII APP.	KEK	MDN
B	08/30/2022	SNP	RE-ISSUED FOR ARTICLE VII APP.	KEK	MDN
A	05/13/2022	SNP	ISSUED FOR ARTICLE VII APP.	KEK	MDN
Rev	Date	Drawn	Description	Ch'k'd	App'd

Project Number 505100001			B/O	Total
-----------------------------	--	--	-----	-------

D'gn'd	Eng Chk	Coord.	App'd	Security
Drawn	Coord.	App'd	Security	STD
Dwg Chk	App'd	Security	STD	
Plan Scale 1" = 50'	Status PRE	Rev E	Security STD	
Drawing Number C119				

Title
EMPIRE OFFSHORE WIND LLC.
EMPIRE WIND 2 PROJECT
PLAN AND PROFILE
NASSAU COUNTY, NEW YORK
ISSUED FOR ARTICLE VII APPLICATION



LEGEND - PROPOSED

- 200' STATION
- MILE POST
- 345 kV DUCT BANK CENTERLINE (2 CIRCUITS - EXPORT)
- 345 kV DUCT BANK CENTERLINE (2 CIRCUITS - INTERCONNECTION)
- 345 kV DUCT BANK CENTERLINE (1 CIRCUIT - EXPORT)
- 345 kV DUCT BANK CENTERLINE (1 CIRCUIT - INTERCONNECTION)
- 138 kV SYSTEM INTERCONNECTION DUCT BANK CENTERLINE (1 CIRCUIT)

- POI FENCE
- HORIZONTAL AUGER BORE (TRENCHLESS CROSSING)
- HORIZONTAL DIRECTIONAL DRILL (TRENCHLESS CROSSING)
- JOINT BAY
- TRANSITION VAULT
- TEMPORARY AUXILIARY PIT
- CABLE BRIDGE AND BRIDGE TRANSITION AREA
- SUBSTATION

LEGEND - EXISTING

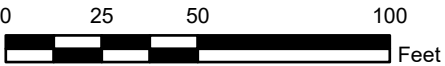
- 2' CONTOUR
- PUBLIC CONTOUR BOUNDARY
- PROPERTY LINE*
- JURISDICTIONAL BOUNDARY**

*ASSESSOR'S PARCEL NO. (APN) SHOWN WITHIN PROPERTY LINE
**SOURCE NY GIS CLEARINGHOUSE

NOTES

- EXISTING UTILITIES NOT SHOWN.
- DUCT BANK SHALL MAINTAIN MINIMUM DEPTH OF COVER OF 3 FT.
- LOCATION OF ALIGNMENT, JOINT BAYS, AND TRANSITION VAULTS SUBJECT TO CHANGE DURING DETAILED DESIGN PHASE.
- THE SURVEYED CONTOURS AND IMAGERY SHOWN ARE FROM AN AERIAL FLIGHT FLOWN ON 04/23/2021 PROVIDED BY ROBINSON AERIAL.
- BATHYMETRIC DATA IS FROM PUBLIC SOURCES (NOAA).
- PROPERTY LINES SHOWN ON THIS MAP ARE TAX MAP GRADE AND NOT A RESULT OF A BOUNDARY SURVEY.
- HORIZONTAL DATUM IS NAD83, NEW YORK STATE PLANE, LONG ISLAND US FOOT. VERTICAL DATUM IS NAVD1988.
- DRAWINGS ARE FOR PERMITTING PURPOSES ONLY, NOT FOR CONSTRUCTION.

PLAN SCALE



M
MOTT
MACDONALD

Mott MacDonald NY Inc.
1400 Broadway, 21st Floor
New York, NY 10018-0000
Certificate of Authorization #: 0017019



Client:

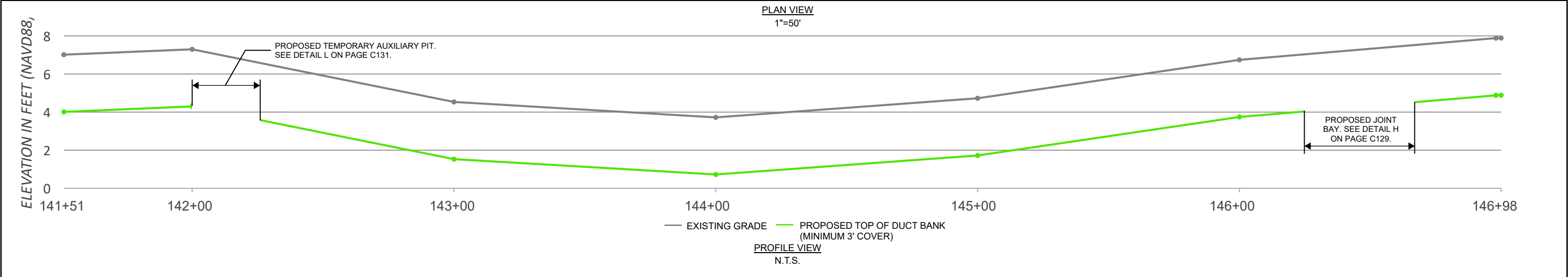
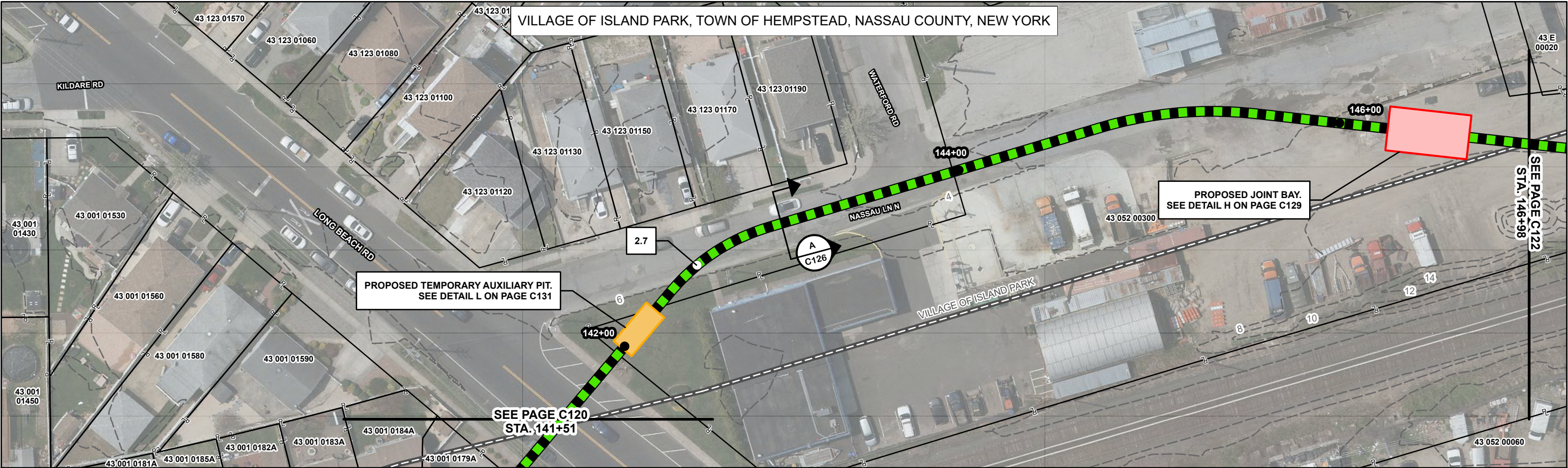
E	05/30/2023	SNP	RE-ISSUED FOR ARTICLE VII APP.	KEK	MDN
D	04/04/2023	SNP	RE-ISSUED FOR ARTICLE VII APP. (2 CIRCUIT)	KEK	MDN
C	11/18/2022	SNP	RE-ISSUED FOR ARTICLE VII APP.	KEK	MDN
B	08/30/2022	SNP	RE-ISSUED FOR ARTICLE VII APP.	KEK	MDN
A	05/13/2022	SNP	ISSUED FOR ARTICLE VII APP.	KEK	MDN
Rev	Date	Drawn	Description	Ch'k'd	App'd

Date	Project Number	B/O	Total
	505100001		

D'gn'd	Eng Chk	Coord.	App'd	Security
Drawn	Coord.	App'd	Security	
Dwg Chk	App'd	Security		
Plan Scale	Status	Rev	Security	
1" = 50'	PRE	E	STD	
Drawing Number				
C120				

Title

EMPIRE OFFSHORE WIND LLC.
EMPIRE WIND 2 PROJECT
PLAN AND PROFILE
NASSAU COUNTY, NEW YORK
ISSUED FOR ARTICLE VII APPLICATION



LEGEND - PROPOSED

- 200' STATION
- MILE POST
- 345 kV DUCT BANK CENTERLINE (2 CIRCUITS - EXPORT)
- 345 kV DUCT BANK CENTERLINE (2 CIRCUITS - INTERCONNECTION)
- 345 kV DUCT BANK CENTERLINE (1 CIRCUIT - EXPORT)
- 345 kV DUCT BANK CENTERLINE (1 CIRCUIT - INTERCONNECTION)
- 138 kV SYSTEM INTERCONNECTION DUCT BANK CENTERLINE (1 CIRCUIT)

- POI FENCE
- HORIZONTAL AUGER BORE (TRENCHLESS CROSSING)
- HORIZONTAL DIRECTIONAL DRILL (TRENCHLESS CROSSING)
- JOINT BAY
- TRANSITION VAULT
- TEMPORARY AUXILIARY PIT
- CABLE BRIDGE AND BRIDGE TRANSITION AREA
- SUBSTATION

LEGEND - EXISTING

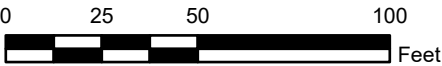
- 2' CONTOUR
- PUBLIC CONTOUR BOUNDARY
- PROPERTY LINE*
- JURISDICTIONAL BOUNDARY**

*ASSESSOR'S PARCEL NO. (APN) SHOWN WITHIN PROPERTY LINE
**SOURCE NY GIS CLEARINGHOUSE

NOTES

- EXISTING UTILITIES NOT SHOWN.
- DUCT BANK SHALL MAINTAIN MINIMUM DEPTH OF COVER OF 3 FT.
- LOCATION OF ALIGNMENT, JOINT BAYS, AND TRANSITION VAULTS SUBJECT TO CHANGE DURING DETAILED DESIGN PHASE.
- THE SURVEYED CONTOURS AND IMAGERY SHOWN ARE FROM AN AERIAL FLIGHT FLOWN ON 04/23/2021 PROVIDED BY ROBINSON AERIAL.
- BATHYMETRIC DATA IS FROM PUBLIC SOURCES (NOAA).
- PROPERTY LINES SHOWN ON THIS MAP ARE TAX MAP GRADE AND NOT A RESULT OF A BOUNDARY SURVEY.
- HORIZONTAL DATUM IS NAD83, NEW YORK STATE PLANE, LONG ISLAND US FOOT. VERTICAL DATUM IS NAVD1988.
- DRAWINGS ARE FOR PERMITTING PURPOSES ONLY, NOT FOR CONSTRUCTION.

PLAN SCALE



M
MOTT
MACDONALD

Mott MacDonald NY Inc.
1400 Broadway, 21st Floor
New York, NY 10018-0000
Certificate of Authorization #: 0017019



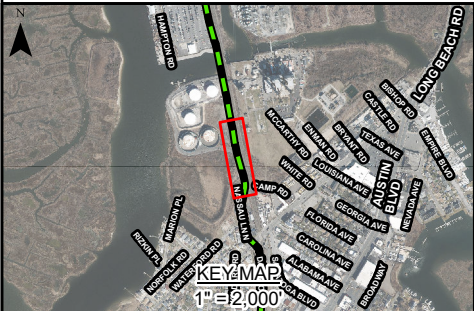
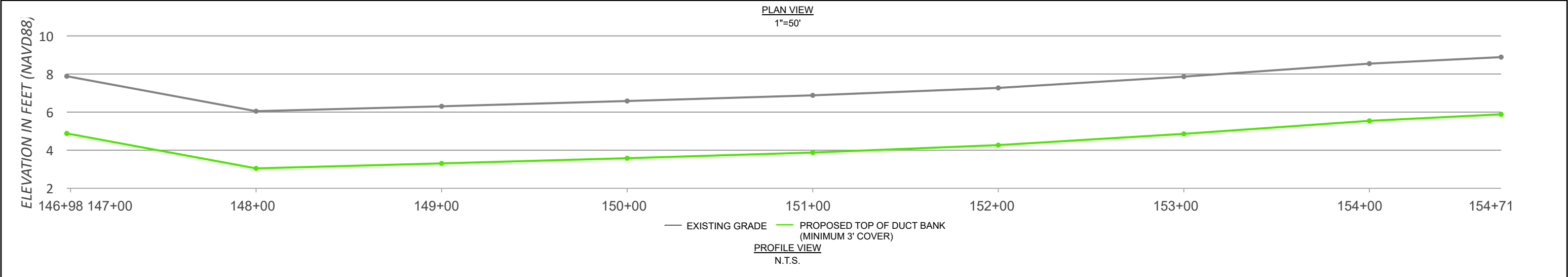
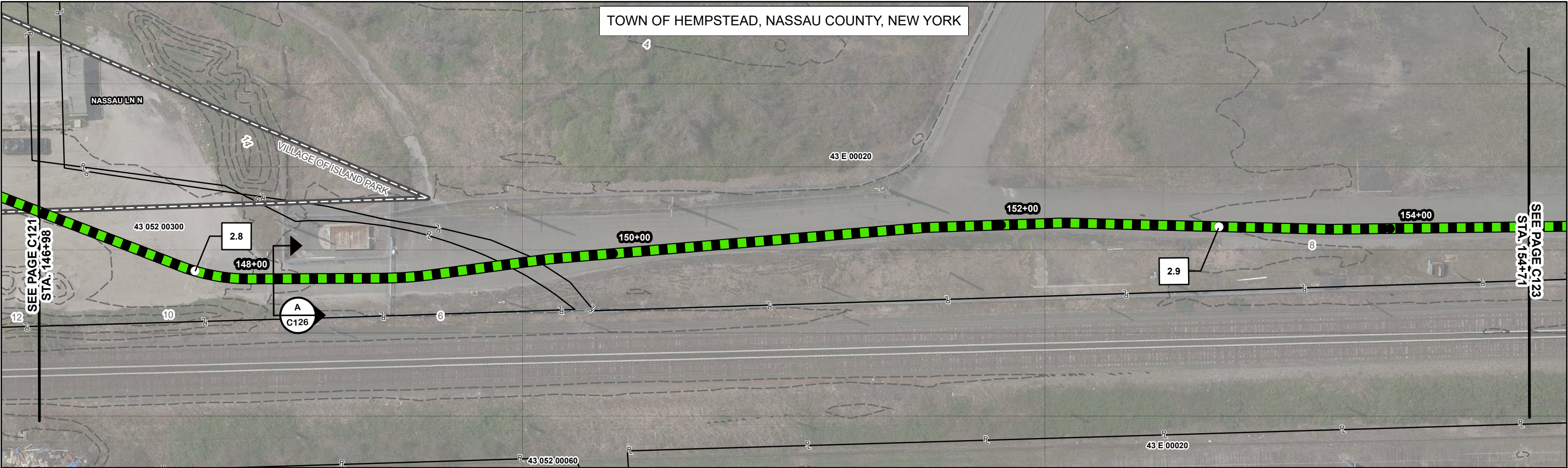
Client:

E	05/30/2023	SNP	RE-ISSUED FOR ARTICLE VII APP.	KEK	MDN
D	04/04/2023	SNP	RE-ISSUED FOR ARTICLE VII APP. (2 CIRCUIT)	KEK	MDN
C	11/18/2022	SNP	RE-ISSUED FOR ARTICLE VII APP.	KEK	MDN
B	08/30/2022	SNP	RE-ISSUED FOR ARTICLE VII APP.	KEK	MDN
A	05/13/2022	SNP	ISSUED FOR ARTICLE VII APP.	KEK	MDN
Rev	Date	Drawn	Description	Ch'k'd	App'd

Date	Project Number	B/O	Total
	505100001		

D'gn'd	Eng Chk	Coord.	App'd	Security
Drawn	Coord.	App'd	Rev	STD
Dwg Chk	App'd	Rev	Rev	STD
Plan Scale	Status	Rev	Rev	STD
1" = 50'	PRE	E	Rev	STD
Drawing Number	C121			

EMPIRE OFFSHORE WIND LLC.
EMPIRE WIND 2 PROJECT
PLAN AND PROFILE
NASSAU COUNTY, NEW YORK
ISSUED FOR ARTICLE VII APPLICATION



LEGEND - PROPOSED

- 200' STATION
- MILE POST
- 345 kV DUCT BANK CENTERLINE (2 CIRCUITS - EXPORT)
- 345 kV DUCT BANK CENTERLINE (2 CIRCUITS - INTERCONNECTION)
- 345 kV DUCT BANK CENTERLINE (1 CIRCUIT - EXPORT)
- 345 kV DUCT BANK CENTERLINE (1 CIRCUIT - INTERCONNECTION)
- 138 kV SYSTEM INTERCONNECTION DUCT BANK CENTERLINE (1 CIRCUIT)

- POI FENCE
- HORIZONTAL AUGER BORE (TRENCHLESS CROSSING)
- HORIZONTAL DIRECTIONAL DRILL (TRENCHLESS CROSSING)
- JOINT BAY
- TRANSITION VAULT
- TEMPORARY AUXILIARY PIT
- CABLE BRIDGE AND BRIDGE TRANSITION AREA
- SUBSTATION

LEGEND - EXISTING

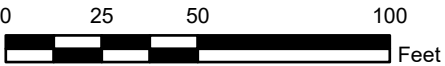
- 2' CONTOUR
- PUBLIC CONTOUR BOUNDARY
- PROPERTY LINE*
- JURISDICTIONAL BOUNDARY**

*ASSESSOR'S PARCEL NO. (APN) SHOWN WITHIN PROPERTY LINE
**SOURCE NY GIS CLEARINGHOUSE

NOTES

- EXISTING UTILITIES NOT SHOWN.
- DUCT BANK SHALL MAINTAIN MINIMUM DEPTH OF COVER OF 3 FT.
- LOCATION OF ALIGNMENT, JOINT BAYS, AND TRANSITION VAULTS SUBJECT TO CHANGE DURING DETAILED DESIGN PHASE.
- THE SURVEYED CONTOURS AND IMAGERY SHOWN ARE FROM AN AERIAL FLIGHT FLOWN ON 04/23/2021 PROVIDED BY ROBINSON AERIAL.
- BATHYMETRIC DATA IS FROM PUBLIC SOURCES (NOAA).
- PROPERTY LINES SHOWN ON THIS MAP ARE TAX MAP GRADE AND NOT A RESULT OF A BOUNDARY SURVEY.
- HORIZONTAL DATUM IS NAD83, NEW YORK STATE PLANE, LONG ISLAND US FOOT. VERTICAL DATUM IS NAVD1988.
- DRAWINGS ARE FOR PERMITTING PURPOSES ONLY, NOT FOR CONSTRUCTION.

PLAN SCALE



MOTT
MACDONALD

Mott MacDonald NY Inc.
1400 Broadway, 21st Floor
New York, NY 10018-0000
Certificate of Authorization #: 0017019



Client:

E	05/30/2023	SNP	RE-ISSUED FOR ARTICLE VII APP.	KEK	MDN
D	04/04/2023	SNP	RE-ISSUED FOR ARTICLE VII APP. (2 CIRCUIT)	KEK	MDN
C	11/18/2022	SNP	RE-ISSUED FOR ARTICLE VII APP.	KEK	MDN
B	08/30/2022	SNP	RE-ISSUED FOR ARTICLE VII APP.	KEK	MDN
A	05/13/2022	SNP	ISSUED FOR ARTICLE VII APP.	KEK	MDN
Rev	Date	Drawn	Description	Ch'k'd	App'd

Project Number 505100001			B/O	Total
-----------------------------	--	--	-----	-------

D'gn'd		Eng Chk	
Drawn		Coord.	
Dwg Chk		App'd	
Plan Scale 1" = 50'	Status PRE	Rev E	Security STD
Drawing Number C122			

EMPIRE OFFSHORE WIND LLC.
EMPIRE WIND 2 PROJECT
PLAN AND PROFILE
NASSAU COUNTY, NEW YORK
ISSUED FOR ARTICLE VII APPLICATION