

LEGEND - PROPOSED

- 200' STATION
- MILE POST
- 345 kV DUCT BANK CENTERLINE (2 CIRCUITS - EXPORT)
- 345 kV DUCT BANK CENTERLINE (2 CIRCUITS - INTERCONNECTION)
- 345 kV DUCT BANK CENTERLINE (1 CIRCUIT - EXPORT)
- 345 kV DUCT BANK CENTERLINE (1 CIRCUIT - INTERCONNECTION)
- 138 kV SYSTEM INTERCONNECTION DUCT BANK CENTERLINE (1 CIRCUIT)

- POI FENCE
- HORIZONTAL AUGER BORE (TRENCHLESS CROSSING)
- HORIZONTAL DIRECTIONAL DRILL (TRENCHLESS CROSSING)
- JOINT BAY
- TRANSITION VAULT
- TEMPORARY AUXILIARY PIT
- CABLE BRIDGE AND BRIDGE TRANSITION AREA
- SUBSTATION

LEGEND - EXISTING

- 2' CONTOUR
- PUBLIC CONTOUR BOUNDARY
- PROPERTY LINE*
- JURISDICTIONAL BOUNDARY**

*ASSESSOR'S PARCEL NO. (APN) SHOWN WITHIN PROPERTY LINE
**SOURCE NY GIS CLEARINGHOUSE

NOTES

- EXISTING UTILITIES NOT SHOWN.
- DUCT BANK SHALL MAINTAIN MINIMUM DEPTH OF COVER OF 3 FT.
- LOCATION OF ALIGNMENT, JOINT BAYS, AND TRANSITION VAULTS SUBJECT TO CHANGE DURING DETAILED DESIGN PHASE.
- THE SURVEYED CONTOURS AND IMAGERY SHOWN ARE FROM AN AERIAL FLIGHT FLOWN ON 04/23/2021 PROVIDED BY ROBINSON AERIAL.
- BATHYMETRIC DATA IS FROM PUBLIC SOURCES (NOAA).
- PROPERTY LINES SHOWN ON THIS MAP ARE TAX MAP GRADE AND NOT A RESULT OF A BOUNDARY SURVEY.
- HORIZONTAL DATUM IS NAD83, NEW YORK STATE PLANE, LONG ISLAND US FOOT. VERTICAL DATUM IS NAVD1988.
- DRAWINGS ARE FOR PERMITTING PURPOSES ONLY, NOT FOR CONSTRUCTION.



Mott MacDonald NY Inc.
1400 Broadway, 21st Floor
New York, NY 10018-0000
Certificate of Authorization #: 0017019



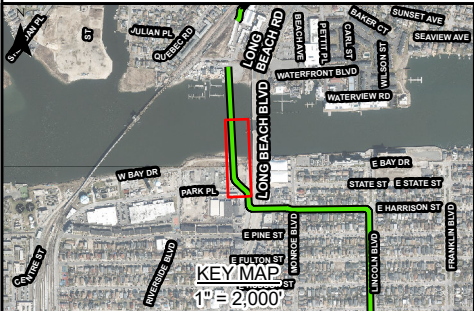
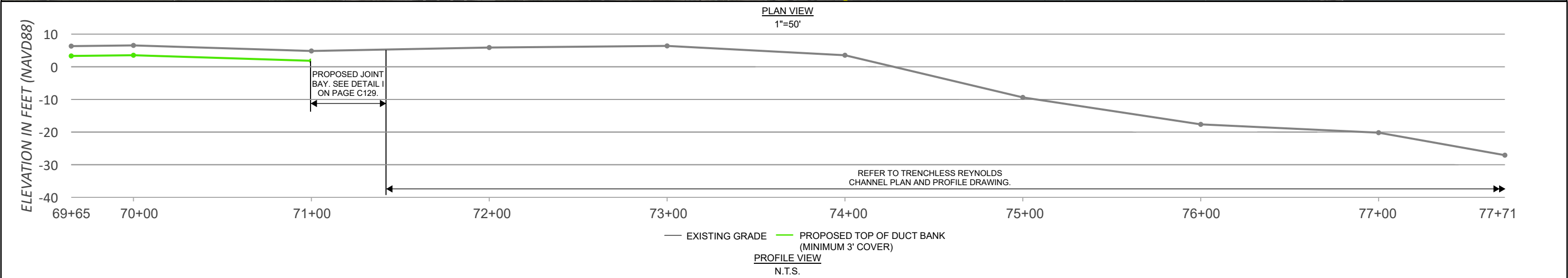
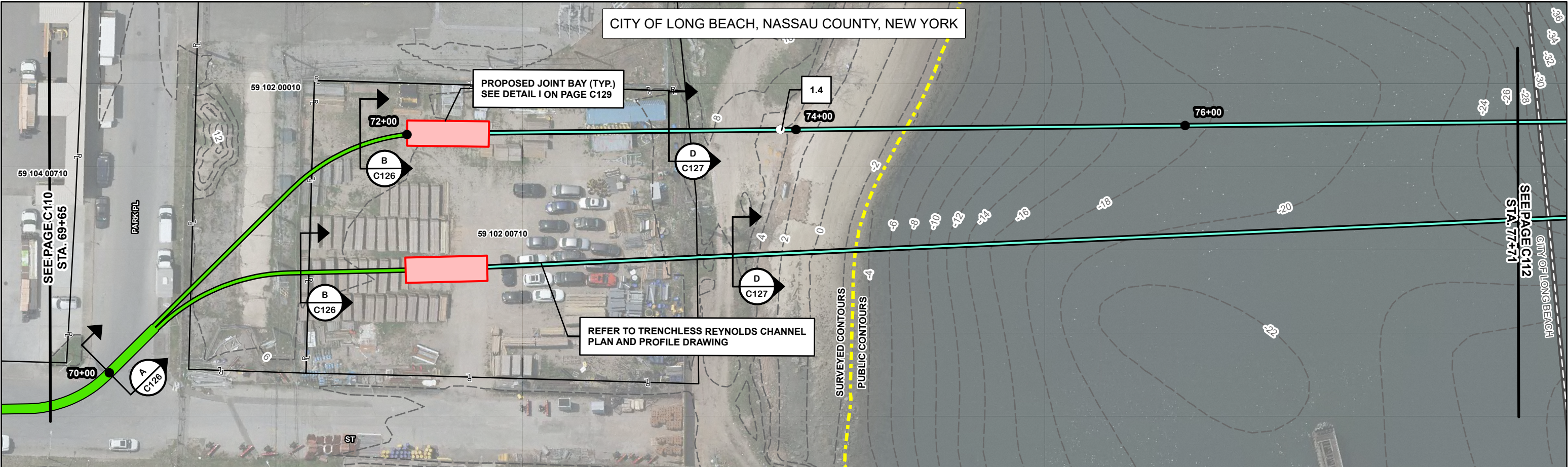
Client:

E	05/30/2023	SNP	RE-ISSUED FOR ARTICLE VII APP.	KEK	MDN
D	04/04/2023	SNP	RE-ISSUED FOR ARTICLE VII APP. (2 CIRCUIT)	KEK	MDN
C	11/18/2022	SNP	RE-ISSUED FOR ARTICLE VII APP.	KEK	MDN
B	08/30/2022	SNP	RE-ISSUED FOR ARTICLE VII APP.	KEK	MDN
A	05/13/2022	SNP	ISSUED FOR ARTICLE VII APP.	KEK	MDN
Rev	Date	Drawn	Description	Ch'k'd	App'd

Date	Project Number	B/O	Total
	505100001		

D'gn'd	Eng Chk	Status	Rev	Security
		PRE	E	STD
Drawn	Coord.	Plan Scale	Drawing Number	
		1" = 50'	C110	

EMPIRE OFFSHORE WIND LLC.
EMPIRE WIND 2 PROJECT
PLAN AND PROFILE
NASSAU COUNTY, NEW YORK
ISSUED FOR ARTICLE VII APPLICATION



LEGEND - PROPOSED

- 200' STATION
- MILE POST
- 345 kV DUCT BANK CENTERLINE (2 CIRCUITS - EXPORT)
- 345 kV DUCT BANK CENTERLINE (2 CIRCUITS - INTERCONNECTION)
- 345 kV DUCT BANK CENTERLINE (1 CIRCUIT - EXPORT)
- 345 kV DUCT BANK CENTERLINE (1 CIRCUIT - INTERCONNECTION)
- 138 kV SYSTEM INTERCONNECTION DUCT BANK CENTERLINE (1 CIRCUIT)

- POI FENCE
- HORIZONTAL AUGER BORE (TRENCHLESS CROSSING)
- HORIZONTAL DIRECTIONAL DRILL (TRENCHLESS CROSSING)
- JOINT BAY
- TRANSITION VAULT
- TEMPORARY AUXILIARY PIT
- CABLE BRIDGE AND BRIDGE TRANSITION AREA
- SUBSTATION

LEGEND - EXISTING

- 2' CONTOUR
- PUBLIC CONTOUR BOUNDARY
- PROPERTY LINE*
- JURISDICTIONAL BOUNDARY**

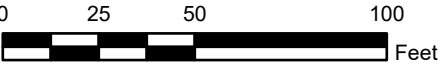
*ASSESSOR'S PARCEL NO. (APN) SHOWN WITHIN PROPERTY LINE
**SOURCE NY GIS CLEARINGHOUSE

NOTES

- EXISTING UTILITIES NOT SHOWN.
- DUCT BANK SHALL MAINTAIN MINIMUM DEPTH OF COVER OF 3 FT.
- LOCATION OF ALIGNMENT, JOINT BAYS, AND TRANSITION VAULTS SUBJECT TO CHANGE DURING DETAILED DESIGN PHASE.
- THE SURVEYED CONTOURS AND IMAGERY SHOWN ARE FROM AN AERIAL FLIGHT FLOWN ON 04/23/2021 PROVIDED BY ROBINSON AERIAL.
- BATHYMETRIC DATA IS FROM PUBLIC SOURCES (NOAA).
- PROPERTY LINES SHOWN ON THIS MAP ARE TAX MAP GRADE AND NOT A RESULT OF A BOUNDARY SURVEY.
- HORIZONTAL DATUM IS NAD83, NEW YORK STATE PLANE, LONG ISLAND US FOOT. VERTICAL DATUM IS NAVD1988.
- DRAWINGS ARE FOR PERMITTING PURPOSES ONLY, NOT FOR CONSTRUCTION.



PLAN SCALE



M
MOTT
MACDONALD

Mott MacDonald NY Inc.
1400 Broadway, 21st Floor
New York, NY 10018-0000
Certificate of Authorization #: 0017019



Client:

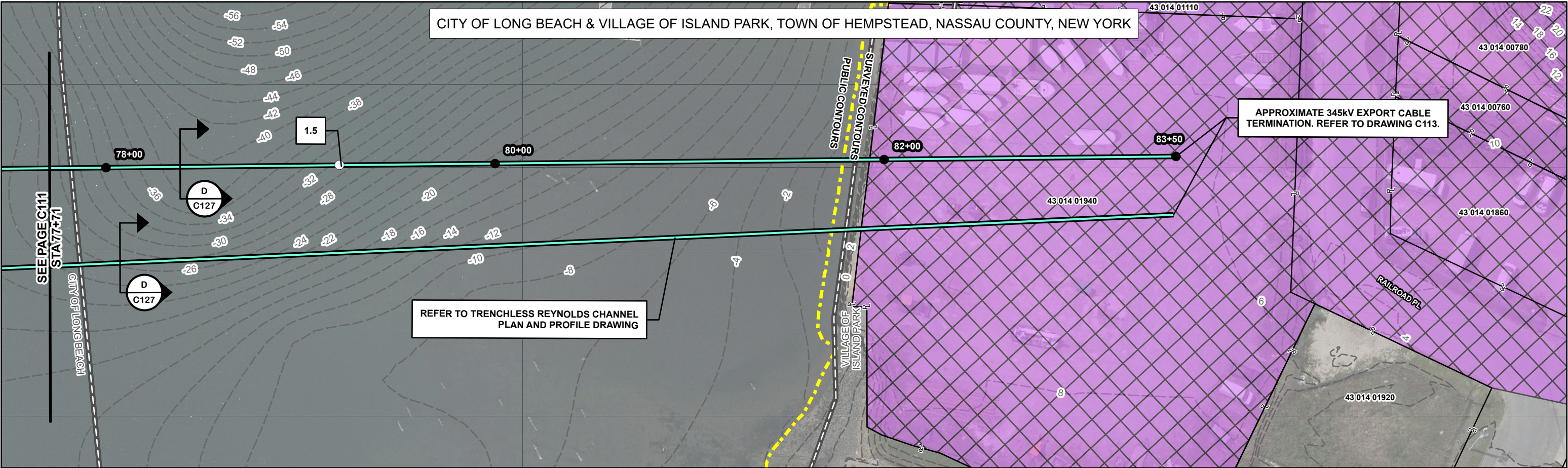
E	05/30/2023	SNP	RE-ISSUED FOR ARTICLE VII APP.	KEK	MDN
D	04/04/2023	SNP	RE-ISSUED FOR ARTICLE VII APP. (2 CIRCUIT)	KEK	MDN
C	11/18/2022	SNP	RE-ISSUED FOR ARTICLE VII APP.	KEK	MDN
B	08/30/2022	SNP	RE-ISSUED FOR ARTICLE VII APP.	KEK	MDN
A	05/13/2022	SNP	ISSUED FOR ARTICLE VII APP.	KEK	MDN
Rev	Date	Drawn	Description	Ch'k'd	App'd

Project Number			B/O		Total	
505100001						

D'gn'd		Eng Chk	
Drawn		Coord.	
Dwg Chk		App'd	
Plan Scale	Status	Rev	Security
1" = 50'	PRE	E	STD
Drawing Number			
C111			

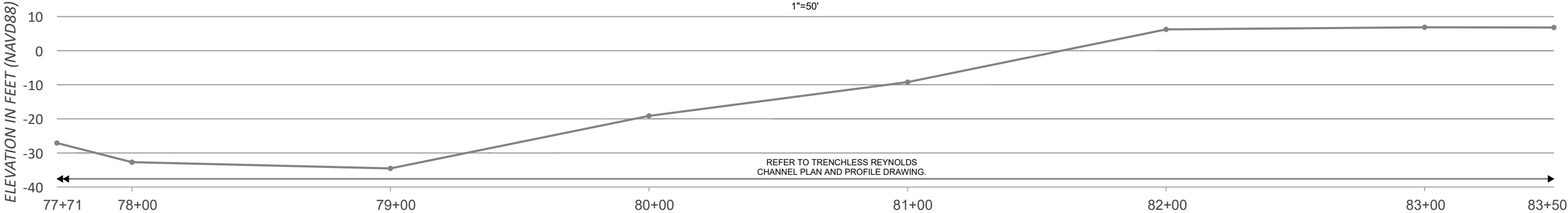
Title
EMPIRE OFFSHORE WIND LLC.
EMPIRE WIND 2 PROJECT
PLAN AND PROFILE
NASSAU COUNTY, NEW YORK
ISSUED FOR ARTICLE VII APPLICATION

CITY OF LONG BEACH & VILLAGE OF ISLAND PARK, TOWN OF HEMPSTEAD, NASSAU COUNTY, NEW YORK



PLAN VIEW

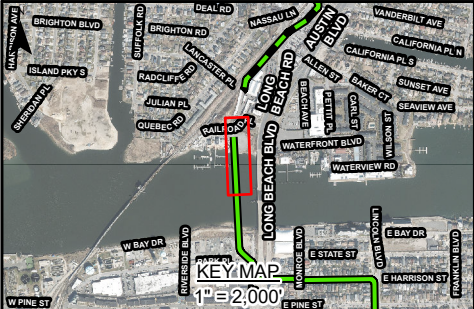
1"=50'



REFER TO TRENCHLESS REYNOLDS
CHANNEL PLAN AND PROFILE DRAWING.

— EXISTING GRADE — PROPOSED TOP OF DUCT BANK
(MINIMUM 3' COVER)

PROFILE VIEW
N.T.S.



LEGEND - PROPOSED

- 200' STATION
- MILE POST
- 345 kV DUCT BANK CENTERLINE (2 CIRCUITS - EXPORT)
- 345 kV DUCT BANK CENTERLINE (2 CIRCUITS - INTERCONNECTION)
- 345 kV DUCT BANK CENTERLINE (1 CIRCUIT - EXPORT)
- 345 kV DUCT BANK CENTERLINE (1 CIRCUIT - INTERCONNECTION)
- 138 kV SYSTEM INTERCONNECTION DUCT BANK CENTERLINE (1 CIRCUIT)

- POI FENCE
- HORIZONTAL AUGER BORE (TRENCHLESS CROSSING)
- HORIZONTAL DIRECTIONAL DRILL (TRENCHLESS CROSSING)
- JOINT BAY
- TRANSITION VAULT
- TEMPORARY AUXILIARY PIT
- CABLE BRIDGE AND BRIDGE TRANSITION AREA
- SUBSTATION

LEGEND - EXISTING

- 2' CONTOUR
- PUBLIC CONTOUR BOUNDARY
- PROPERTY LINE*
- JURISDICTIONAL BOUNDARY**

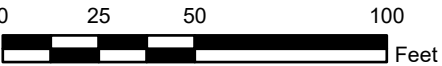
*ASSESSOR'S PARCEL NO. (APN) SHOWN
WITHIN PROPERTY LINE
**SOURCE NY GIS CLEARINGHOUSE

NOTES

- EXISTING UTILITIES NOT SHOWN.
- DUCT BANK SHALL MAINTAIN MINIMUM DEPTH OF COVER OF 3 FT.
- LOCATION OF ALIGNMENT, JOINT BAYS, AND TRANSITION VAULTS SUBJECT TO CHANGE DURING DETAILED DESIGN PHASE.
- THE SURVEYED CONTOURS AND IMAGERY SHOWN ARE FROM AN AERIAL FLIGHT FLOWN ON 04/23/2021 PROVIDED BY ROBINSON AERIAL.
- BATHYMETRIC DATA IS FROM PUBLIC SOURCES (NOAA).
- PROPERTY LINES SHOWN ON THIS MAP ARE TAX MAP GRADE AND NOT A RESULT OF A BOUNDARY SURVEY.
- HORIZONTAL DATUM IS NAD83, NEW YORK STATE PLANE, LONG ISLAND US FOOT. VERTICAL DATUM IS NAVD1988.
- DRAWINGS ARE FOR PERMITTING PURPOSES ONLY, NOT FOR CONSTRUCTION.



PLAN SCALE



M
MOTT
MACDONALD

Mott MacDonald NY Inc.
1400 Broadway, 21st Floor
New York, NY 10018-0000
Certificate of Authorization #: 0017019



Client:

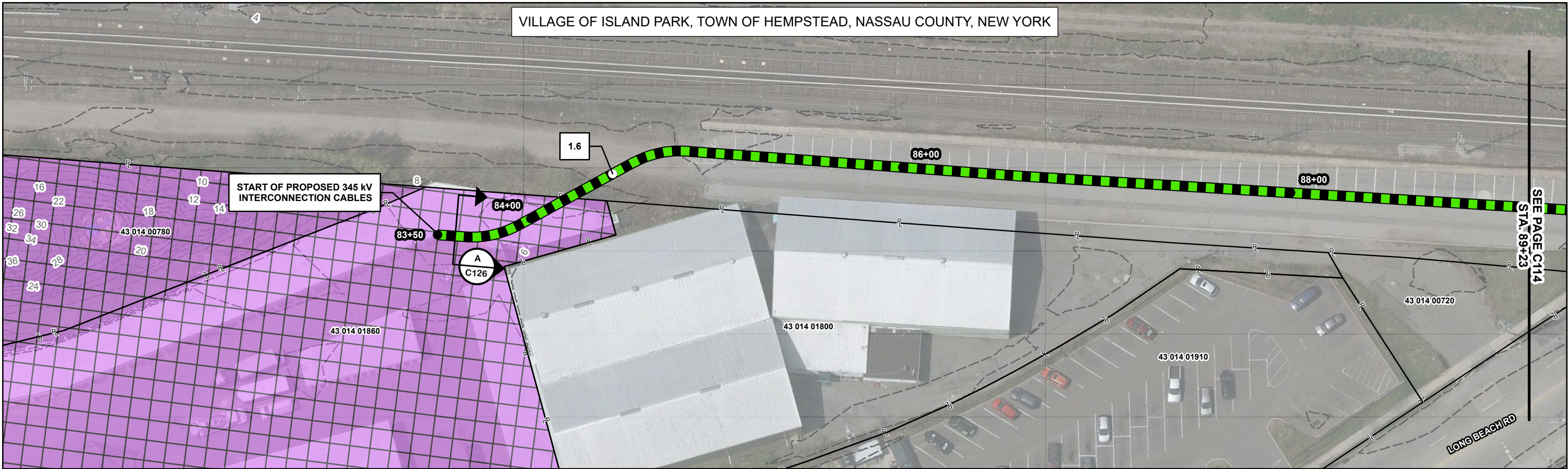
E	05/30/2023	SNP	RE-ISSUED FOR ARTICLE VII APP.	KEK	MDN
D	04/04/2023	SNP	RE-ISSUED FOR ARTICLE VII APP. (2 CIRCUIT)	KEK	MDN
C	11/18/2022	SNP	RE-ISSUED FOR ARTICLE VII APP.	KEK	MDN
B	08/30/2022	SNP	RE-ISSUED FOR ARTICLE VII APP.	KEK	MDN
A	05/13/2022	SNP	ISSUED FOR ARTICLE VII APP.	KEK	MDN
Rev	Date	Drawn	Description	Ch'k'd	App'd

Date		
Project Number	B/O	Total
505100001		

D'gn'd	Eng Chk	
Drawn	Coord.	
Dwg Chk	App'd	
Plan Scale 1" = 50'	Status PRE	Rev E
Drawing Number C112	Security STD	

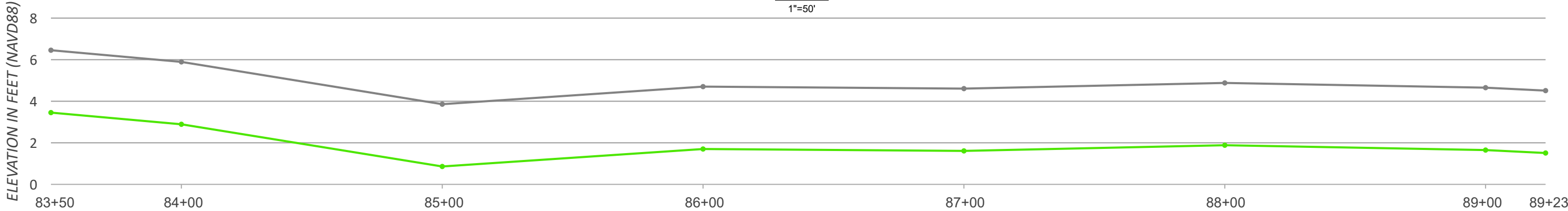
Title
EMPIRE OFFSHORE WIND LLC.
EMPIRE WIND 2 PROJECT
PLAN AND PROFILE
NASSAU COUNTY, NEW YORK
ISSUED FOR ARTICLE VII APPLICATION

VILLAGE OF ISLAND PARK, TOWN OF HEMPSTEAD, NASSAU COUNTY, NEW YORK



PLAN VIEW

1"=50'



PROFILE VIEW

N.T.S.



LEGEND - PROPOSED

- 200' STATION
- MILE POST
- 345 kV DUCT BANK CENTERLINE (2 CIRCUITS - EXPORT)
- 345 kV DUCT BANK CENTERLINE (2 CIRCUITS - INTERCONNECTION)
- 345 kV DUCT BANK CENTERLINE (1 CIRCUIT - EXPORT)
- 345 kV DUCT BANK CENTERLINE (1 CIRCUIT - INTERCONNECTION)
- 138 kV SYSTEM INTERCONNECTION DUCT BANK CENTERLINE (1 CIRCUIT)

- POI FENCE
- HORIZONTAL AUGER BORE (TRENCHLESS CROSSING)
- HORIZONTAL DIRECTIONAL DRILL (TRENCHLESS CROSSING)
- JOINT BAY
- TRANSITION VAULT
- TEMPORARY AUXILIARY PIT
- CABLE BRIDGE AND BRIDGE TRANSITION AREA
- SUBSTATION

LEGEND - EXISTING

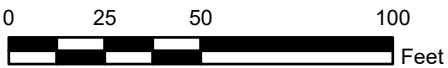
- 2' CONTOUR
- PUBLIC CONTOUR BOUNDARY
- PROPERTY LINE*
- JURISDICTIONAL BOUNDARY**

*ASSESSOR'S PARCEL NO. (APN) SHOWN WITHIN PROPERTY LINE
**SOURCE NY GIS CLEARINGHOUSE

NOTES

- EXISTING UTILITIES NOT SHOWN.
- DUCT BANK SHALL MAINTAIN MINIMUM DEPTH OF COVER OF 3 FT.
- LOCATION OF ALIGNMENT, JOINT BAYS, AND TRANSITION VAULTS SUBJECT TO CHANGE DURING DETAILED DESIGN PHASE.
- THE SURVEYED CONTOURS AND IMAGERY SHOWN ARE FROM AN AERIAL FLIGHT FLOWN ON 04/23/2021 PROVIDED BY ROBINSON AERIAL.
- BATHYMETRIC DATA IS FROM PUBLIC SOURCES (NOAA).
- PROPERTY LINES SHOWN ON THIS MAP ARE TAX MAP GRADE AND NOT A RESULT OF A BOUNDARY SURVEY.
- HORIZONTAL DATUM IS NAD83, NEW YORK STATE PLANE, LONG ISLAND US FOOT. VERTICAL DATUM IS NAVD1988.
- DRAWINGS ARE FOR PERMITTING PURPOSES ONLY, NOT FOR CONSTRUCTION.

PLAN SCALE



MOTT
MACDONALD

Mott MacDonald NY Inc.
1400 Broadway, 21st Floor
New York, NY 10018-0000
Certificate of Authorization #: 0017019



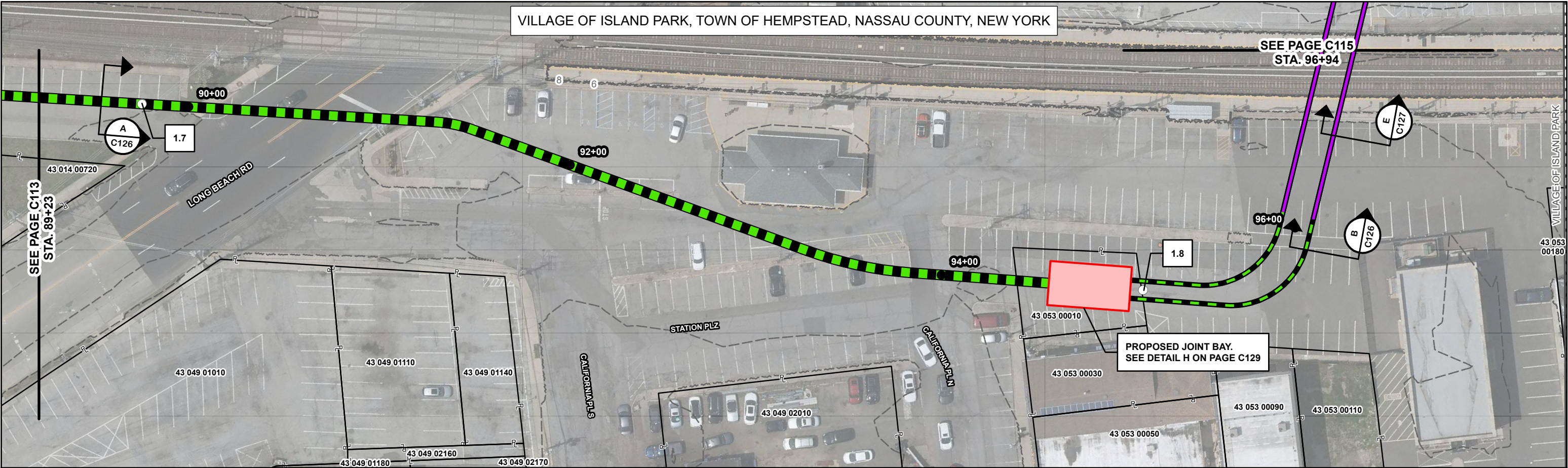
Client:

E	05/30/2023	SNP	RE-ISSUED FOR ARTICLE VII APP.	KEK	MDN
D	04/04/2023	SNP	RE-ISSUED FOR ARTICLE VII APP. (2 CIRCUIT)	KEK	MDN
C	11/18/2022	SNP	RE-ISSUED FOR ARTICLE VII APP.	KEK	MDN
B	08/30/2022	SNP	RE-ISSUED FOR ARTICLE VII APP.	KEK	MDN
A	05/13/2022	SNP	ISSUED FOR ARTICLE VII APP.	KEK	MDN
Rev	Date	Drawn	Description	Ch'k'd	App'd

Project Number	B/O	Total
505100001		

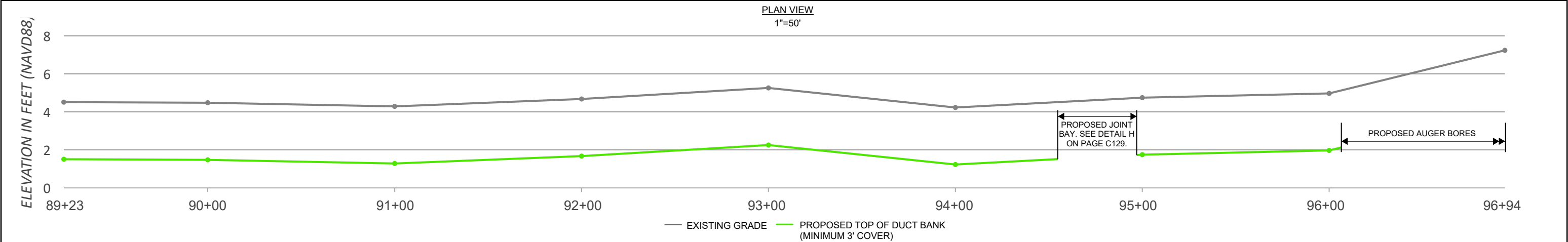
D'gn'd	Eng Chk	Coord.	App'd	Security
Drawn	Coord.	App'd	Security	
Dwg Chk	App'd	Security		
Plan Scale	Status	Rev	Security	
1" = 50'	PRE	E	STD	
Drawing Number				
C113				

EMPIRE OFFSHORE WIND LLC.
EMPIRE WIND 2 PROJECT
PLAN AND PROFILE
NASSAU COUNTY, NEW YORK
ISSUED FOR ARTICLE VII APPLICATION



PLAN VIEW

1"=50'



PROFILE VIEW

N.T.S.



LEGEND - PROPOSED

- 200' STATION
- MILE POST
- 345 kV DUCT BANK CENTERLINE (2 CIRCUITS - EXPORT)
- 345 kV DUCT BANK CENTERLINE (2 CIRCUITS - INTERCONNECTION)
- 345 kV DUCT BANK CENTERLINE (1 CIRCUIT - EXPORT)
- 345 kV DUCT BANK CENTERLINE (1 CIRCUIT - INTERCONNECTION)
- 138 kV SYSTEM INTERCONNECTION DUCT BANK CENTERLINE (1 CIRCUIT)

- POI FENCE
- HORIZONTAL AUGER BORE (TRENCHLESS CROSSING)
- HORIZONTAL DIRECTIONAL DRILL (TRENCHLESS CROSSING)
- JOINT BAY
- TRANSITION VAULT
- TEMPORARY AUXILIARY PIT
- CABLE BRIDGE AND BRIDGE TRANSITION AREA
- SUBSTATION

LEGEND - EXISTING

- 2' CONTOUR
- PUBLIC CONTOUR BOUNDARY
- PROPERTY LINE*
- JURISDICTIONAL BOUNDARY**

*ASSESSOR'S PARCEL NO. (APN) SHOWN WITHIN PROPERTY LINE
**SOURCE NY GIS CLEARINGHOUSE

NOTES

- EXISTING UTILITIES NOT SHOWN.
- DUCT BANK SHALL MAINTAIN MINIMUM DEPTH OF COVER OF 3 FT.
- LOCATION OF ALIGNMENT, JOINT BAYS, AND TRANSITION VAULTS SUBJECT TO CHANGE DURING DETAILED DESIGN PHASE.
- THE SURVEYED CONTOURS AND IMAGERY SHOWN ARE FROM AN AERIAL FLIGHT FLOWN ON 04/23/2021 PROVIDED BY ROBINSON AERIAL.
- BATHYMETRIC DATA IS FROM PUBLIC SOURCES (NOAA).
- PROPERTY LINES SHOWN ON THIS MAP ARE TAX MAP GRADE AND NOT A RESULT OF A BOUNDARY SURVEY.
- HORIZONTAL DATUM IS NAD83, NEW YORK STATE PLANE, LONG ISLAND US FOOT. VERTICAL DATUM IS NAVD1988.
- DRAWINGS ARE FOR PERMITTING PURPOSES ONLY, NOT FOR CONSTRUCTION.

PLAN SCALE



MOTT
MACDONALD

Mott MacDonald NY Inc.
1400 Broadway, 21st Floor
New York, NY 10018-0000
Certificate of Authorization #: 0017019



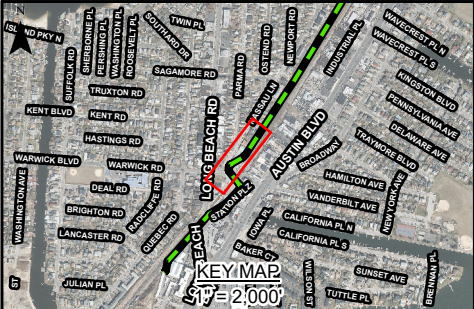
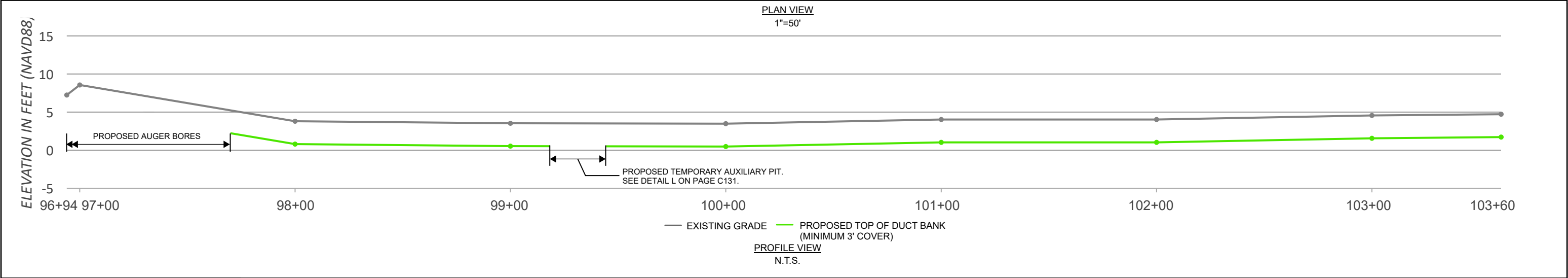
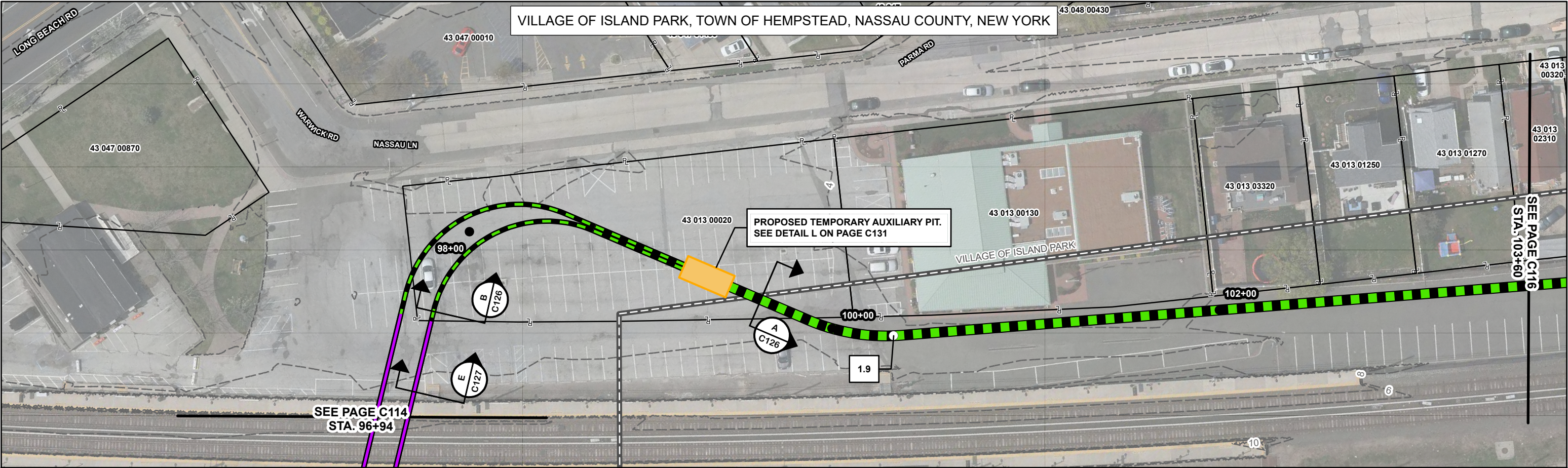
Client:

E	05/30/2023	SNP	RE-ISSUED FOR ARTICLE VII APP.	KEK	MDN
D	04/04/2023	SNP	RE-ISSUED FOR ARTICLE VII APP. (2 CIRCUIT)	KEK	MDN
C	11/18/2022	SNP	RE-ISSUED FOR ARTICLE VII APP.	KEK	MDN
B	08/30/2022	SNP	RE-ISSUED FOR ARTICLE VII APP.	KEK	MDN
A	05/13/2022	SNP	ISSUED FOR ARTICLE VII APP.	KEK	MDN
Rev	Date	Drawn	Description	Ch'k'd	App'd

Date	Project Number	B/O	Total
	505100001		

D'gn'd	Eng Chk	Status	Rev	Security
		PRE	E	STD
Drawn	Coord.	Plan Scale	Dwg Chk	App'd
		1" = 50'		
		Drawing Number		
		C114		

EMPIRE OFFSHORE WIND LLC.
EMPIRE WIND 2 PROJECT
PLAN AND PROFILE
NASSAU COUNTY, NEW YORK
ISSUED FOR ARTICLE VII APPLICATION



LEGEND - PROPOSED

- 200' STATION
- MILE POST
- 345 kV DUCT BANK CENTERLINE (2 CIRCUITS - EXPORT)
- 345 kV DUCT BANK CENTERLINE (2 CIRCUITS - INTERCONNECTION)
- 345 kV DUCT BANK CENTERLINE (1 CIRCUIT - EXPORT)
- 345 kV DUCT BANK CENTERLINE (1 CIRCUIT - INTERCONNECTION)
- 138 kV SYSTEM INTERCONNECTION DUCT BANK CENTERLINE (1 CIRCUIT)

- POI FENCE
- HORIZONTAL AUGER BORE (TRENCHLESS CROSSING)
- HORIZONTAL DIRECTIONAL DRILL (TRENCHLESS CROSSING)
- JOINT BAY
- TRANSITION VAULT
- TEMPORARY AUXILIARY PIT
- CABLE BRIDGE AND BRIDGE TRANSITION AREA
- SUBSTATION

LEGEND - EXISTING

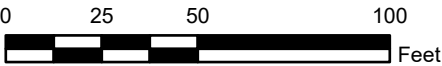
- 2' CONTOUR
- PUBLIC CONTOUR BOUNDARY
- PROPERTY LINE*
- JURISDICTIONAL BOUNDARY**

*ASSESSOR'S PARCEL NO. (APN) SHOWN WITHIN PROPERTY LINE
**SOURCE NY GIS CLEARINGHOUSE

NOTES

- EXISTING UTILITIES NOT SHOWN.
- DUCT BANK SHALL MAINTAIN MINIMUM DEPTH OF COVER OF 3 FT.
- LOCATION OF ALIGNMENT, JOINT BAYS, AND TRANSITION VAULTS SUBJECT TO CHANGE DURING DETAILED DESIGN PHASE.
- THE SURVEYED CONTOURS AND IMAGERY SHOWN ARE FROM AN AERIAL FLIGHT FLOWN ON 04/23/2021 PROVIDED BY ROBINSON AERIAL.
- BATHYMETRIC DATA IS FROM PUBLIC SOURCES (NOAA).
- PROPERTY LINES SHOWN ON THIS MAP ARE TAX MAP GRADE AND NOT A RESULT OF A BOUNDARY SURVEY.
- HORIZONTAL DATUM IS NAD83, NEW YORK STATE PLANE, LONG ISLAND US FOOT. VERTICAL DATUM IS NAVD1988.
- DRAWINGS ARE FOR PERMITTING PURPOSES ONLY, NOT FOR CONSTRUCTION.

PLAN SCALE



MOTT
MACDONALD

Mott MacDonald NY Inc.
1400 Broadway, 21st Floor
New York, NY 10018-0000
Certificate of Authorization #: 0017019



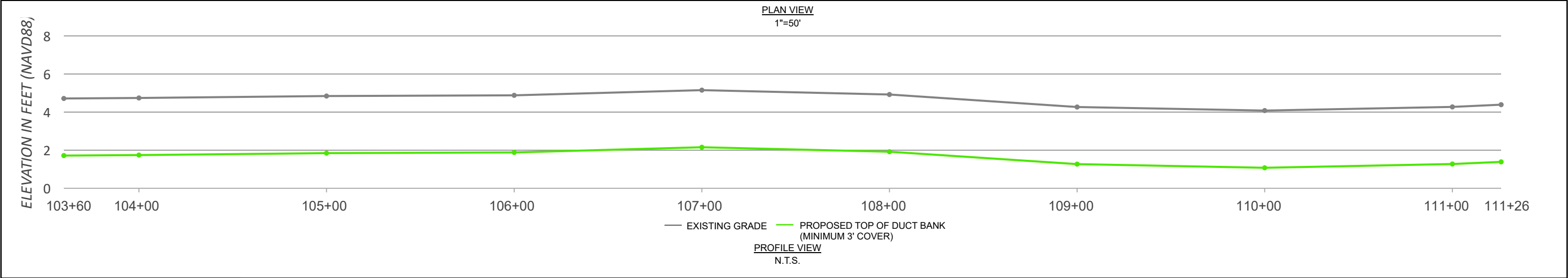
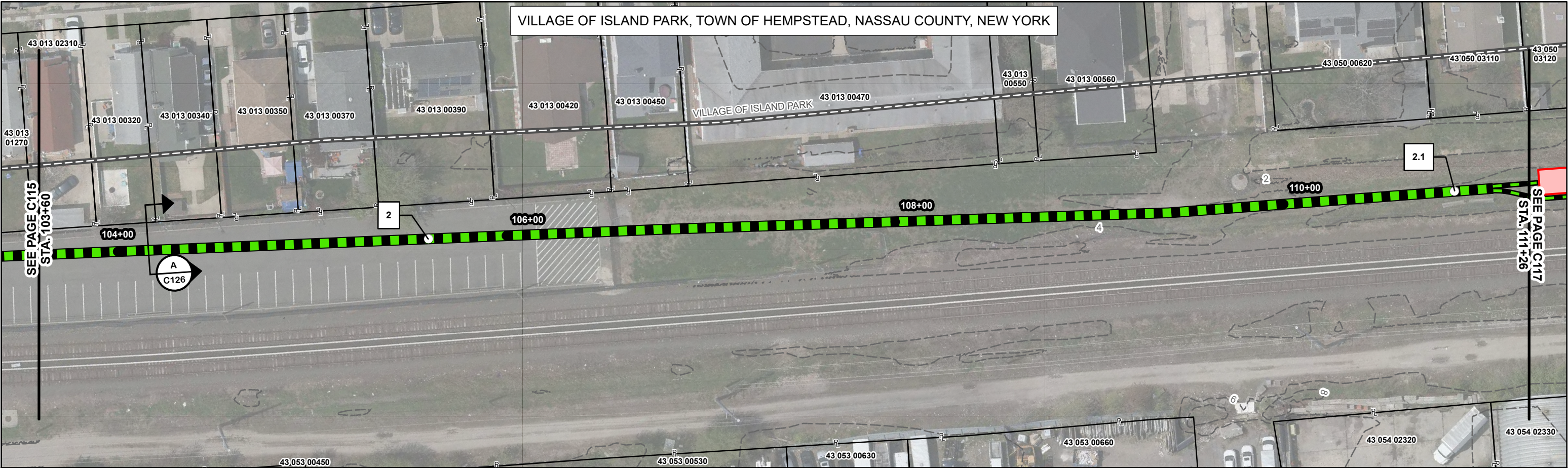
Client:

E	05/30/2023	SNP	RE-ISSUED FOR ARTICLE VII APP.	KEK	MDN
D	04/04/2023	SNP	RE-ISSUED FOR ARTICLE VII APP. (2 CIRCUIT)	KEK	MDN
C	11/18/2022	SNP	RE-ISSUED FOR ARTICLE VII APP.	KEK	MDN
B	08/30/2022	SNP	RE-ISSUED FOR ARTICLE VII APP.	KEK	MDN
A	05/13/2022	SNP	ISSUED FOR ARTICLE VII APP.	KEK	MDN
Rev	Date	Drawn	Description	Ch'k'd	App'd

Project Number 505100001			B/O	Total
-----------------------------	--	--	-----	-------

D'gn'd	Eng Chk	Coord.	App'd	Security
Drawn	Coord.	App'd	Rev	STD
Dwg Chk	App'd	Rev	Rev	STD
Plan Scale 1" = 50'	Status PRE	Rev E	Security STD	
Drawing Number C115				

Title EMPIRE OFFSHORE WIND LLC. EMPIRE WIND 2 PROJECT PLAN AND PROFILE NASSAU COUNTY, NEW YORK ISSUED FOR ARTICLE VII APPLICATION				
--	--	--	--	--



LEGEND - PROPOSED

- 200' STATION
- MILE POST
- 345 kV DUCT BANK CENTERLINE (2 CIRCUITS - EXPORT)
- 345 kV DUCT BANK CENTERLINE (2 CIRCUITS - INTERCONNECTION)
- 345 kV DUCT BANK CENTERLINE (1 CIRCUIT - EXPORT)
- 345 kV DUCT BANK CENTERLINE (1 CIRCUIT - INTERCONNECTION)
- 138 kV SYSTEM INTERCONNECTION DUCT BANK CENTERLINE (1 CIRCUIT)

- POI FENCE
- HORIZONTAL AUGER BORE (TRENCHLESS CROSSING)
- HORIZONTAL DIRECTIONAL DRILL (TRENCHLESS CROSSING)
- JOINT BAY
- TRANSITION VAULT
- TEMPORARY AUXILIARY PIT
- CABLE BRIDGE AND BRIDGE TRANSITION AREA
- SUBSTATION

LEGEND - EXISTING

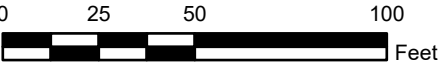
- 2' CONTOUR
- PUBLIC CONTOUR BOUNDARY
- PROPERTY LINE*
- JURISDICTIONAL BOUNDARY**

*ASSESSOR'S PARCEL NO. (APN) SHOWN WITHIN PROPERTY LINE
**SOURCE NY GIS CLEARINGHOUSE

NOTES

- EXISTING UTILITIES NOT SHOWN.
- DUCT BANK SHALL MAINTAIN MINIMUM DEPTH OF COVER OF 3 FT.
- LOCATION OF ALIGNMENT, JOINT BAYS, AND TRANSITION VAULTS SUBJECT TO CHANGE DURING DETAILED DESIGN PHASE.
- THE SURVEYED CONTOURS AND IMAGERY SHOWN ARE FROM AN AERIAL FLIGHT FLOWN ON 04/23/2021 PROVIDED BY ROBINSON AERIAL.
- BATHYMETRIC DATA IS FROM PUBLIC SOURCES (NOAA).
- PROPERTY LINES SHOWN ON THIS MAP ARE TAX MAP GRADE AND NOT A RESULT OF A BOUNDARY SURVEY.
- HORIZONTAL DATUM IS NAD83, NEW YORK STATE PLANE, LONG ISLAND US FOOT. VERTICAL DATUM IS NAVD1988.
- DRAWINGS ARE FOR PERMITTING PURPOSES ONLY, NOT FOR CONSTRUCTION.

PLAN SCALE



M
MOTT
MACDONALD

Mott MacDonald NY Inc.
1400 Broadway, 21st Floor
New York, NY 10018-0000
Certificate of Authorization #: 0017019



Client:

E	05/30/2023	SNP	RE-ISSUED FOR ARTICLE VII APP.	KEK	MDN
D	04/04/2023	SNP	RE-ISSUED FOR ARTICLE VII APP. (2 CIRCUIT)	KEK	MDN
C	11/18/2022	SNP	RE-ISSUED FOR ARTICLE VII APP.	KEK	MDN
B	08/30/2022	SNP	RE-ISSUED FOR ARTICLE VII APP.	KEK	MDN
A	05/13/2022	SNP	ISSUED FOR ARTICLE VII APP.	KEK	MDN
Rev	Date	Drawn	Description	Ch'k'd	App'd

Project Number 505100001			B/O	Total
-----------------------------	--	--	-----	-------

D'gn'd		Eng Chk	
Drawn		Coord.	
Dwg Chk		App'd	
Plan Scale 1" = 50'	Status PRE	Rev E	Security STD
Drawing Number C116			

Title
EMPIRE OFFSHORE WIND LLC.
EMPIRE WIND 2 PROJECT
PLAN AND PROFILE
NASSAU COUNTY, NEW YORK
ISSUED FOR ARTICLE VII APPLICATION