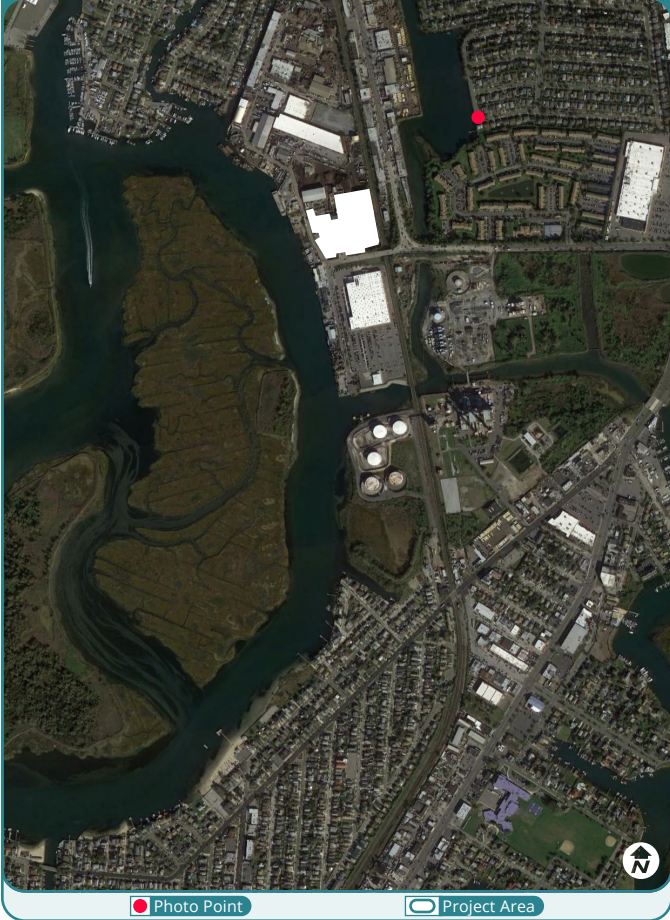


Panoramic Photograph



Vicinity Map



Photograph Information

Viewpoint Location:	Oceanlea Drive
Date of Photograph:	February 4, 2021
Time of Photograph:	10:38 AM (EDT)
Weather Condition:	Clear
Latitude:	40.6239505° N
Longitude:	-73.6479803° W
Viewing Direction:	Southwest
Ground Elevation + Tripod Height:	6 feet

Viewing Instructions

The single-frame simulations on the following pages should be printed at 11 by 17 inches; full size with no scaling; and viewed at arm's length (24 inches).

If viewed on a computer monitor, the document should be scaled to 100 percent and viewed at arm's length (24 inches).

Preliminary Substation Design





This sheet should be printed at 11 by 17 inches; full size with no scaling; and viewed at arm's length (24 inches). If viewed on a computer monitor, the document should be scaled to 100 percent and viewed at arm's length (24 inches).



Equinor Wind Lease Area OCS-A 0512  
EW 2 Hampton Road Substation | Oceanlea Drive

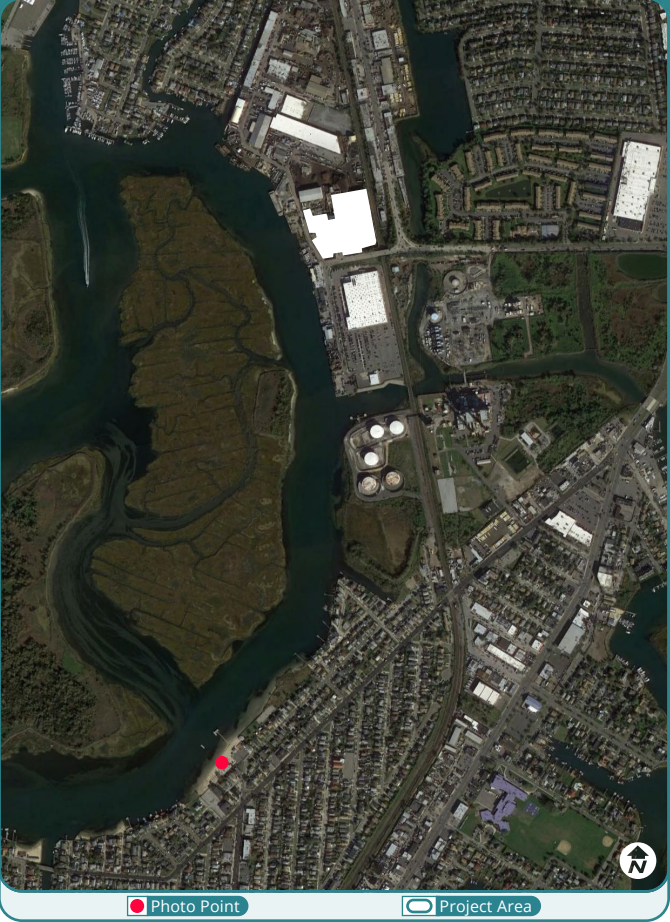




Panoramic Photograph



Vicinity Map



Photograph Information

Viewpoint Location:	Masone Point Beach
Date of Photograph:	February 4, 2021
Time of Photograph:	9:08 AM (EDT)
Weather Condition:	Clear
Latitude:	40.6075482° N
Longitude:	-73.6563308° W
Viewing Direction:	North
Ground Elevation + Tripod Height:	6 feet

Viewing Instructions

The single-frame simulations on the following pages should be printed at 11 by 17 inches; full size with no scaling; and viewed at arm's length (24 inches).

If viewed on a computer monitor, the document should be scaled to 100 percent and viewed at arm's length (24 inches).

Preliminary Substation Design





This sheet should be printed at 11 by 17 inches; full size with no scaling; and viewed at arm's length (24 inches). If viewed on a computer monitor, the document should be scaled to 100 percent and viewed at arm's length (24 inches).



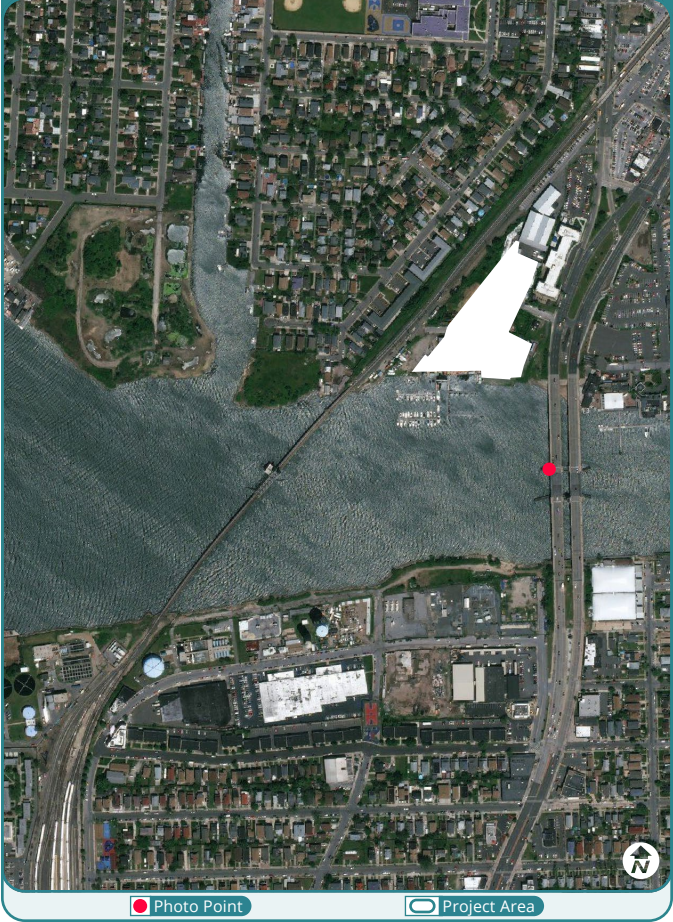
Equinor Wind Lease Area OCS-A 0512  
EW 2 Hampton Road Substation | Masone Point Beach



Panoramic Photograph



Vicinity Map



Photograph Information

Viewpoint Location:	Long Beach Road
Date of Photograph:	September 1, 2021
Time of Photograph:	12:45 PM (EDT)
Weather Condition:	Overcast
Latitude:	40.595684° N
Longitude:	-73.656966° W
Viewing Direction:	Northwest
Ground Elevation + Tripod Height:	30 feet

Viewing Instructions

The single-frame simulations on the following pages should be printed at 11 by 17 inches; full size with no scaling; and viewed at arm's length (24 inches).

If viewed on a computer monitor, the document should be scaled to 100 percent and viewed at arm's length (24 inches).

Preliminary Substation Design





This sheet should be printed at 11 by 17 inches; full size with no scaling; and viewed at arm's length (24 inches). If viewed on a computer monitor, the document should be scaled to 100 percent and viewed at arm's length (24 inches).



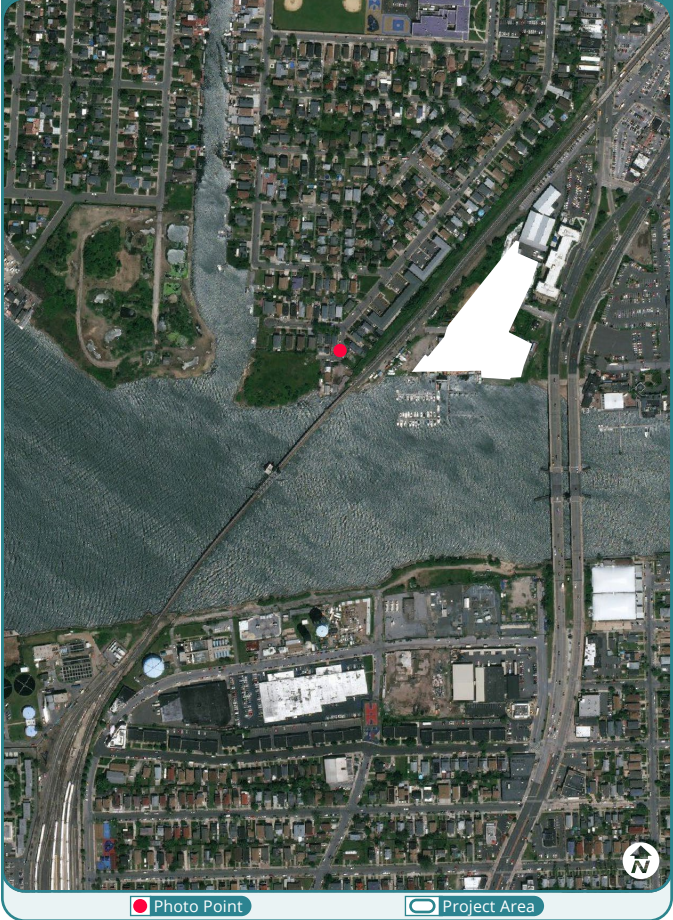
Empire Offshore Wind: Empire Wind Project (EW 1 and EW 2)  
EW 2 Onshore Substation | Long Beach Road



Panoramic Photograph



Vicinity Map



Photograph Information

Viewpoint Location:	Quebec Road
Date of Photograph:	September 1, 2021
Time of Photograph:	2:55 PM (EDT)
Weather Condition:	Overcast
Latitude:	40.597048° N
Longitude:	-73.660342° W
Viewing Direction:	Northeast
Ground Elevation + Tripod Height:	10 feet

Viewing Instructions

The single-frame simulations on the following pages should be printed at 11 by 17 inches; full size with no scaling; and viewed at arm's length (24 inches).

If viewed on a computer monitor, the document should be scaled to 100 percent and viewed at arm's length (24 inches).

Preliminary Substation Design





This sheet should be printed at 11 by 17 inches; full size with no scaling; and viewed at arm's length (24 inches). If viewed on a computer monitor, the document should be scaled to 100 percent and viewed at arm's length (24 inches).



The view of the Onshore Substation is blocked by the existing buildings and vegetation

Equinor Wind Lease Area OCS-A 0512  
EW 2 Onshore Substation | Quebec Road

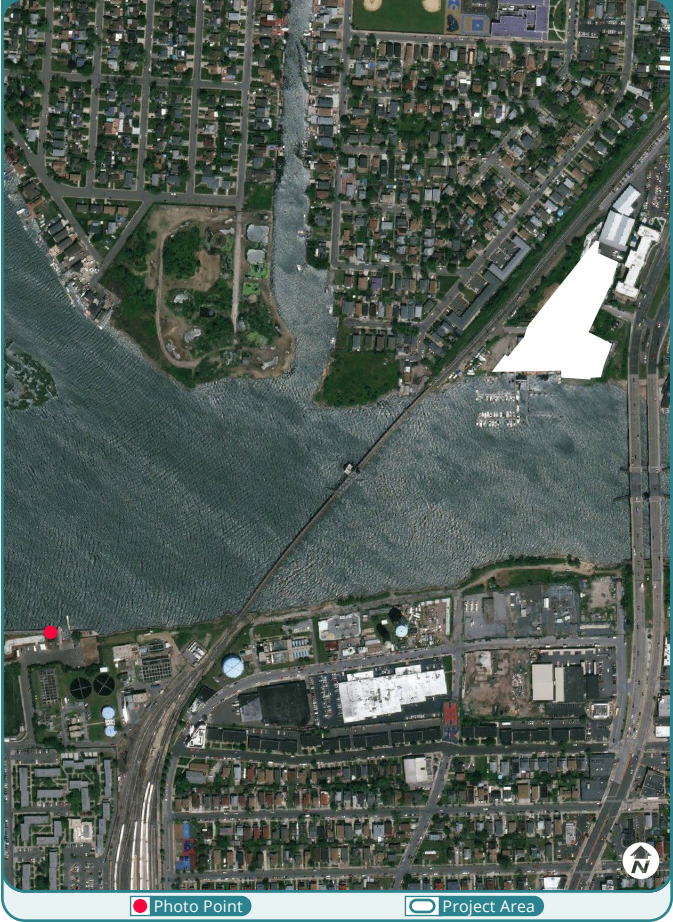




Panoramic Photograph



Vicinity Map



Photograph Information

Viewpoint Location:	Long Beach Park
Date of Photograph:	September 1, 2021
Time of Photograph:	2:10 PM (EDT)
Weather Condition:	Overcast
Latitude:	40.593714° N
Longitude:	-73.666350° W
Viewing Direction:	Northeast
Ground Elevation + Tripod Height:	8 feet

Viewing Instructions

The single-frame simulations on the following pages should be printed at 11 by 17 inches; full size with no scaling; and viewed at arm's length (24 inches).

If viewed on a computer monitor, the document should be scaled to 100 percent and viewed at arm's length (24 inches).

Preliminary Substation Design





This sheet should be printed at 11 by 17 inches; full size with no scaling; and viewed at arm's length (24 inches). If viewed on a computer monitor, the document should be scaled to 100 percent and viewed at arm's length (24 inches).



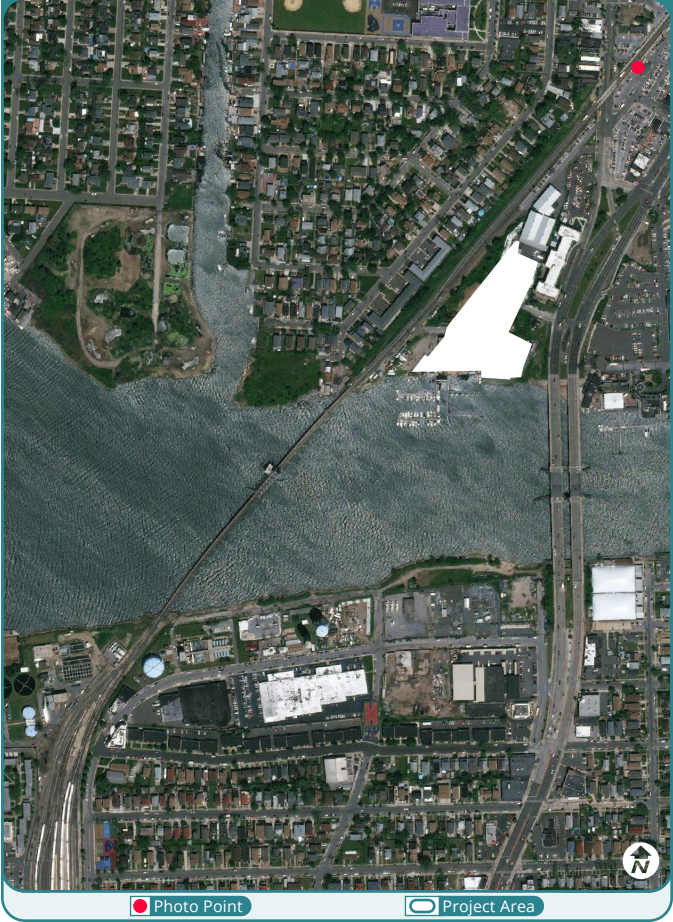
Equinor Wind Lease Area OCS-A 0512  
EW 2 Onshore Substation | Long Beach Park



Panoramic Photograph



Vicinity Map



Photograph Information

Viewpoint Location:	Island Park Station
Date of Photograph:	September 1, 2021
Time of Photograph:	12:30 PM (EDT)
Weather Condition:	Overcast
Latitude:	40.600392° N
Longitude:	-73.655512° W
Viewing Direction:	Southwest
Ground Elevation + Tripod Height:	12 feet

Viewing Instructions

The single-frame simulations on the following pages should be printed at 11 by 17 inches; full size with no scaling; and viewed at arm's length (24 inches).

If viewed on a computer monitor, the document should be scaled to 100 percent and viewed at arm's length (24 inches).

Preliminary Substation Design





This sheet should be printed at 11 by 17 inches; full size with no scaling; and viewed at arm's length (24 inches). If viewed on a computer monitor, the document should be scaled to 100 percent and viewed at arm's length (24 inches).



The view of the Onshore Substation is blocked by the existing buildings and vegetation

Equinor Wind Lease Area OCS-A 0512  
EW 2 Onshore Substation | Island Park Station

