



Subject: Empire Offshore Wind, LLC.
Empire Wind 2 Project – Upcoming Road Restoration

Dear Resident:

In March and April of 2022, Equinor hired a subcontractor to perform preliminary soil borings in the City of Long Beach. These borings created approximately 6 inch diameter holes in the public roadway asphalt at 4 locations. After performing the soil borings, the boreholes were restored with cold patch asphalt. The City of Long Beach Department of Public Works has requested that these bore holes be restored to city standards by installing approximately 6 foot by 6 foot square asphalt patches at each of the four locations.

The locations of the bore holes are as follows:

- Two locations on Long Beach Road in front of 669 Long Beach Blvd, Long Beach, NY – in the parking lanes near the curb near Centre Millwork and Supply
- One location on Riverside Blvd south of Park Place – in the dead end street near the office complex
- Northbound side of Laurelton Blvd north of West Broadway – in the parking lane near the median

This work will be performed by saw cutting the existing roadway, removing the existing asphalt to 12 inches below grade, installing and compacting subgrade materials and paving the new roadway surface. All work will be done in accordance with the City of Long Beach restoration requirements. This restoration work is expected to generate sound consistent with utility street work including: saw cutting, jack hammering and use of a backhoe/paving equipment.

Work is expected to take approximately 4-5 days. Work days will be Monday through Friday. No sound will be produced before 8am or after 4pm. Full road closures are not deemed necessary for this work. The restoration locations are on the sides of the road or on dead end streets, the work can be performed by protecting each work area with work vehicles/cones and maintaining traffic flow. Approximately 4 parking spaces will need to be taken up for the restoration on Laurelton Blvd and side of road parking spaces will be utilized for the Long Beach Road restoration locations. Any parking restrictions will be coordinated with the City of Long Beach Police Department. I have included images below that show the locations of the boreholes.

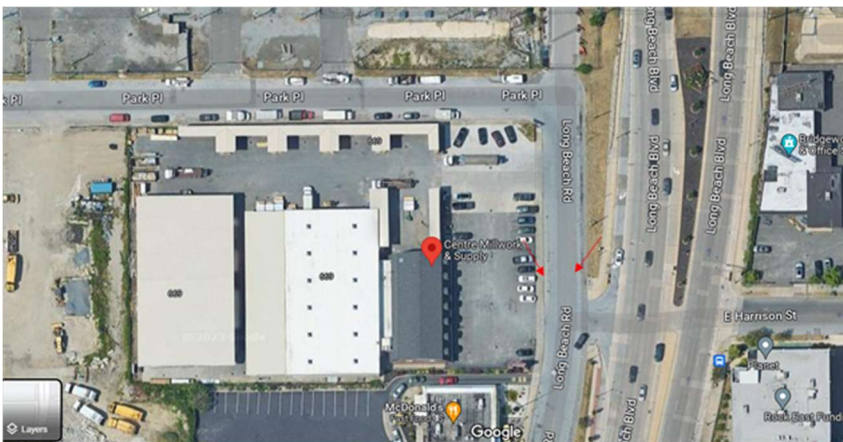
Residents may contact the Empire Wind information line at 1-833-699-1965, or email empirewind@equinor.com for further information.



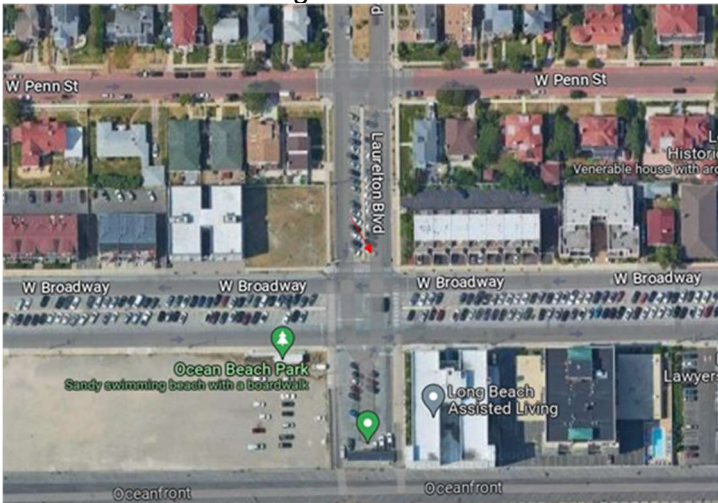
Borehole (existing condition)



Borehole on Riverside Blvd south of Park Place



Two boreholes on Long Beach Road near Centre Millwork and Supply



Borehole on Laurelton Blvd, north of West Broadway