

# Empire Wind Update



Sheringham Shoal Offshore Wind Farm – North Sea, England

---

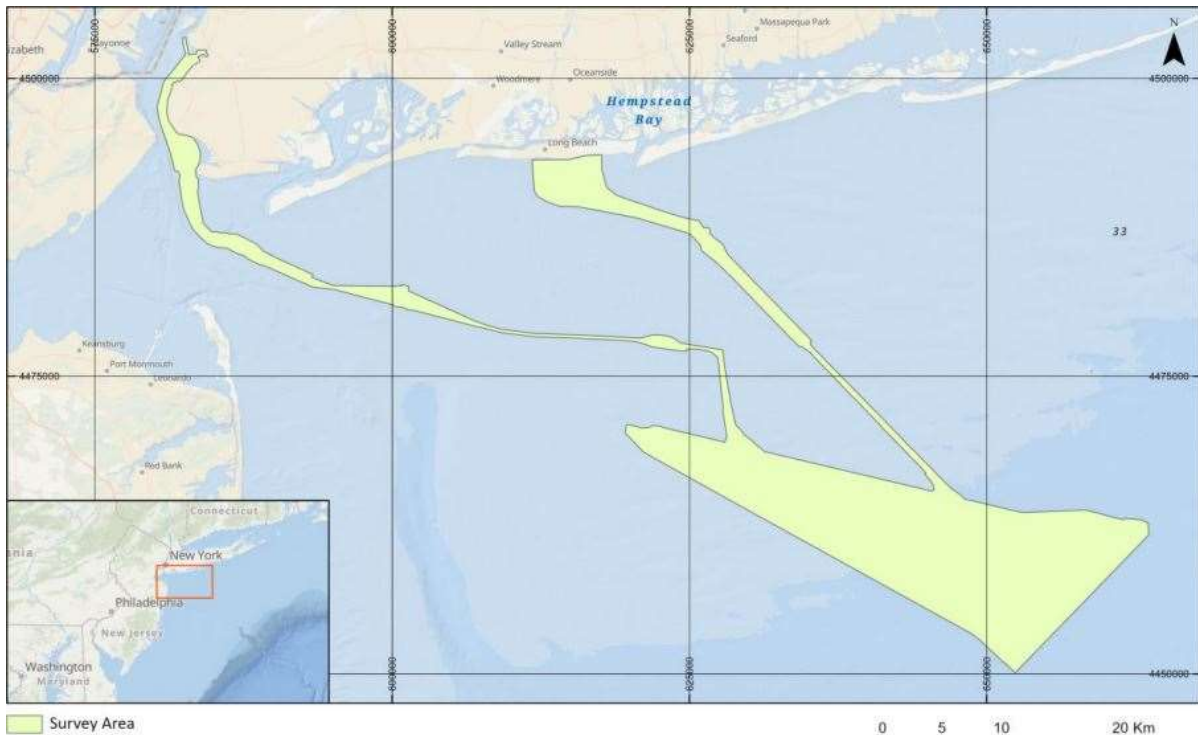
Hello Elizabeth,

Equinor Wind US has awarded a contract to geophysical survey contractor, Ocean Infinity, to conduct the Munitions and Explosives of Concern (MEC) survey and MEC consultant, Ordtek, to support with survey operations. M/V Deep Helder will be performing specific MEC geophysical activities. During this survey the vessel will be deploying subsurface equipment along the export cable corridor and the Empire Wind lease area and will be restricted in their ability to maneuver. The survey is scheduled to begin June 15th 2023

and estimated completion December 2023. M/V Deep Helder will be working 24/7. Approaching vessels are requested to pass at a safe speed and distance.



**Vessel:** M/V Deep Helder  
**Call Sign:** PBYU  
Vessel can be reached on VHF Channel 16  
**Onboard Fisheries Liaison Officer:** Clint Baker



Latitude	Longitude	Latitude	Longitude	Latitude	Longitude	Latitude	Longitude
40° 31.330'N	073° 58.739'W	40° 20.428'N	073° 26.840'W	40° 35.070'N	073° 39.670'W	40° 22.754'N	073° 35.181'W
40° 31.510'N	073° 59.618'W	40° 20.553'N	073° 27.025'W	40° 33.380'N	073° 39.714'W	40° 22.232'N	073° 35.193'W
40° 31.624'N	073° 59.939'W	40° 20.754'N	073° 27.873'W	40° 33.174'N	073° 39.544'W	40° 13.259'N	073° 14.853'W
40° 31.893'N	074° 00.374'W	40° 20.872'N	073° 28.183'W	40° 33.117'N	073° 39.342'W	40° 11.645'N	073° 12.575'W
40° 32.184'N	074° 00.702'W	40° 21.081'N	073° 28.499'W	40° 33.025'N	073° 37.864'W	40° 17.339'N	073° 04.802'W
40° 33.362'N	074° 01.343'W	40° 21.359'N	073° 28.734'W	40° 32.759'N	073° 36.075'W	40° 17.987'N	073° 04.784'W
40° 33.777'N	074° 01.358'W	40° 21.751'N	073° 28.874'W	40° 32.468'N	073° 34.436'W	40° 18.288'N	073° 07.317'W
40° 34.432'N	074° 01.115'W	40° 25.437'N	073° 29.597'W	40° 31.758'N	073° 31.402'W	40° 18.191'N	073° 11.656'W
		40° 25.692'N	073° 29.712'W	40° 31.607'N	073° 31.041'W	40° 22.754'N	073° 35.181'W
		40° 25.859'N	073° 29.857'W	40° 30.875'N	073° 30.029'W		
		40° 26.005'N	073° 30.043'W	40° 30.525'N	073° 29.795'W		
		40° 26.144'N	073° 30.346'W	40° 29.579'N	073° 28.633'W		
		40° 26.402'N	073° 32.073'W				
		40° 26.657'N	073° 34.528'W				
		40° 26.951'N	073° 40.772'W				
		40° 27.157'N	073° 42.704'W				
		40° 27.342'N	073° 43.589'W				
		40° 27.574'N	073° 44.380'W				
		40° 29.132'N	073° 48.696'W				
		40° 29.176'N	073° 49.016'W				
		40° 29.218'N	073° 52.567'W				
		40° 29.303'N	073° 53.139'W				
		40° 30.269'N	073° 55.952'W				

---

Questions and concerns please contact:

Elizabeth Marchetti  
Equinor Fisheries Liaison Officer  
[emarc@equinor.com](mailto:emarc@equinor.com)

---