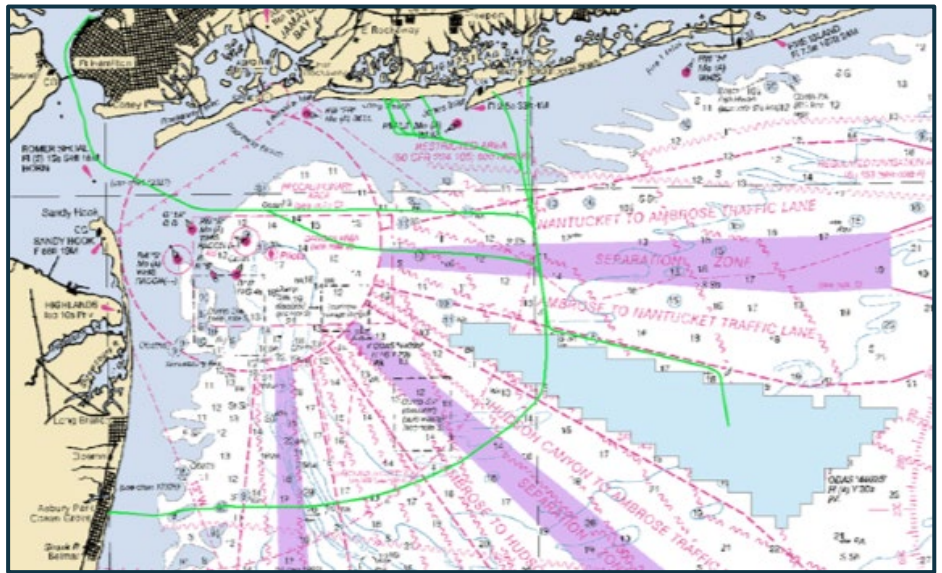


Empire Wind Survey Update

May 2021

Equinor Wind US

Equinor Wind continues planning the Empire Wind in BOEM lease area OCSA-0512. The area extends from 14 miles south of Long Island, spanning 79,350 acres, in water depths between 65 and 131 feet (10-22 fathoms).



2021 Offshore Surveys Continue

Estimated Coordinates of the Empire Wind lease area:

LATITUDE	LONGITUDE	LORAN
40°11.414'N	73°12.864'W	26585.04 - 43507.38
40°12.313'N	73°15.096'W	26605.31 - 43518.46
40°21.918'N	73°36.588'W	26790.20 - 43628.19
40°23.402'N	73°34.584'W	26778.55 - 43642.60
40°18.677'N	73°7.308'W	26554.98 - 43569.94
40°17.814'N	73°4.152'W	26529.05 - 43558.52



Name: Dina Polaris
MMSI: 257006530
Call Sign: LAXB7



Name: Seantis
MMSI: 311963000
Call Sign: C6UM8



Name: Seehorn
MMSI: 210204000
Call sign: 5BSW5

Geoequip vessels **Dina Polaris**, **Seantis** and **Seehorn** will be operating 24 hours/day to conduct geotechnical/soil boring site surveys to include subsea drilling. Survey activity is scheduled to be conducted thru August 31, 2021.

Vessel will have zero maneuverability when operation are underway and we would request all vessels to maintain a 1NM exclusion around the vessel. If the vessel is required to relocate then a minimum of 6hrs notice would ensure sufficient time to recover all drilling equipment and permit the vessel to move.

Fisheries Liaison Contacts:

Sea Risk Solutions is representing Equinor Wind as Fisheries Liaison Officers and are available 24/7 to address fisheries questions and concerns of project developments.

Elizabeth Marchetti
emarc@equinor.com
emarchetti@searisksolutions.com
401-954-2902

Steve Drew
sdrew@searisksolutions.com
908-339-7439

www.equinor.com/en/what-we-do/empirewind.html
www.facebook.com/groups/597095231201268
www.searisksolutions.com



COMMERCIAL FISHERIES
CENTER OF RHODE ISLAND