

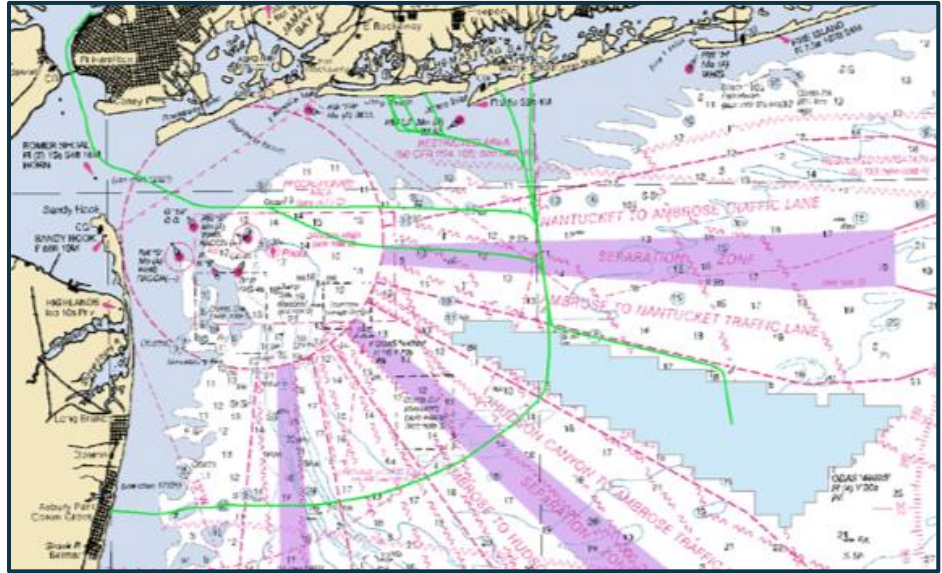


Empire Wind Survey Update

January 2021

Equinor Wind US

Equinor Wind continues planning the Empire Wind / Boardwalk Wind project(s) in BOEM lease area OCSA-0512. The area extends from 14 miles south of Long Island, spanning 79,350 acres, in water depths between 65 and 131 feet (10-22 fathoms).



2021 Offshore Surveys Continue

Equinor Wind US is the lease holder of the New York offshore wind energy area OCS-A 0512 known as the 'Empire Wind' and 'Boardwalk Wind' projects. As part of the site development process, Equinor has been conducting surveys since Spring 2018.

Geophysical and geotechnical surveys continue in the Empire Wind area which consists of Cone Penetration Test (CPT) and Vibrocore samples. CPT and vibrocores assists with site investigation for wind turbine generators and substations.

Estimated Coordinates of the Empire Wind lease area:

LATITUDE	LONGITUDE	LORAN
40°11.414'N	73°12.864'W	26585.04 - 43507.38
40°12.313'N	73°15.096'W	26605.31 - 43518.46
40°21.918'N	73°36.588'W	26790.20 - 43628.19
40°23.402'N	73°34.584'W	26778.55 - 43642.60
40°18.677'N	73°7.308'W	26554.98 - 43569.94
40°17.814'N	73°4.152'W	26529.05 - 43558.52

Ocean Endeavour and Fugro Explorer will continue survey efforts thru Jan 2021, focused on possible export cable routes to New York and New Jersey.



Name: Fugro Explorer

MMSI: 357456000

Call Sign: 3FEV9



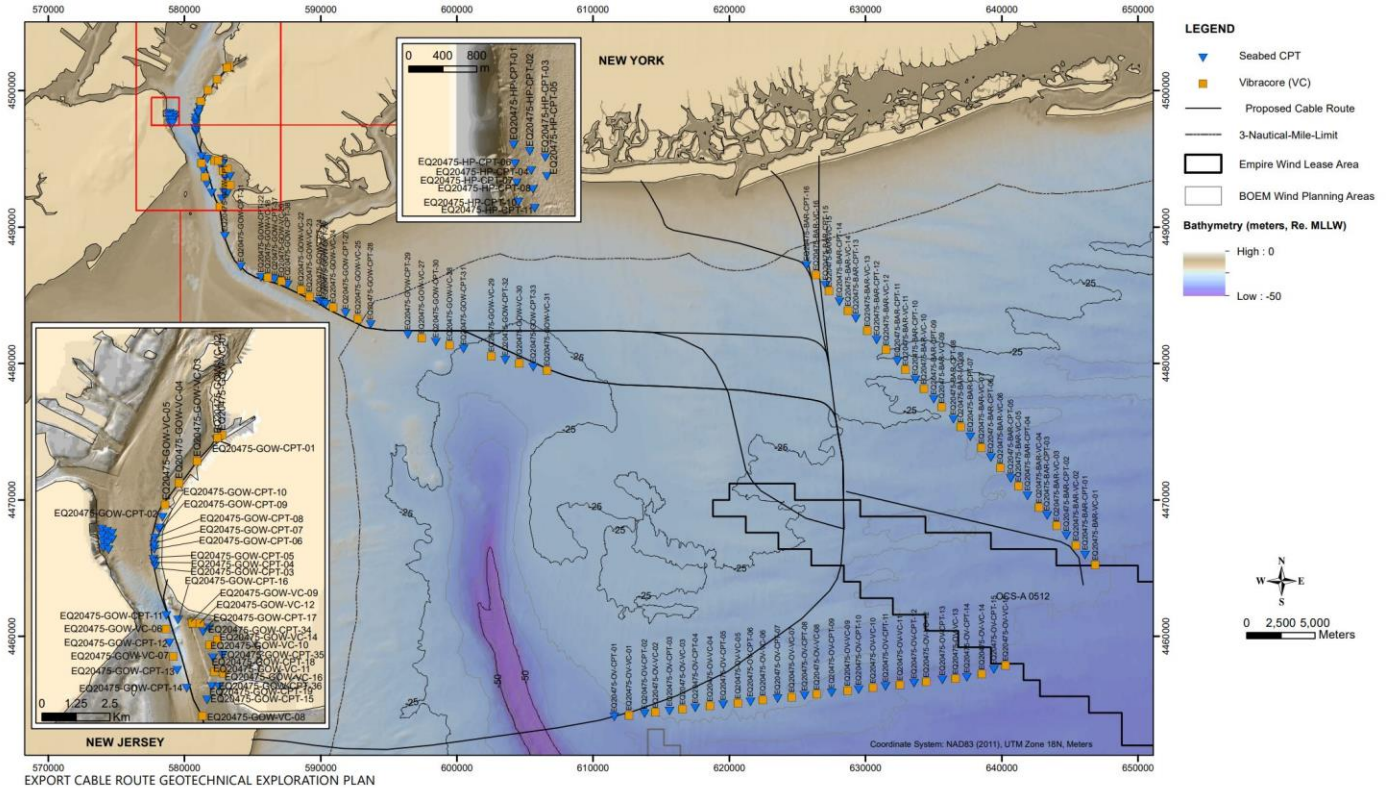
Name: Ocean Endeavour

MMSI: 233694000

Call Sign: GAAL

Soil investigations along the Empire Wind Export Cable Routes conducted by Fugro Explorer

Equinor



04.19021158.01 | Geotechnical Investigation

N:\Projects\02_1020101_1902_1158_Soils_investigation\Map\04.19021158.mxd | C:\Program Files\ArcGIS\ArcToolbox\Toolboxes\Toolbox_20201228.mxd | 12/29/2020, 10:56 AM



Fisheries Liaison and Fisheries Representative Contacts:

Sea Risk Solutions is representing Equinor Wind as Fisheries Liaison Officers and are available 24/7 to address fisheries questions and concerns of project developments.

Elizabeth Marchetti
emarc@equinor.com
emarchetti@searisksolutions.com
 401-954-2902

Steve Drew
sdrew@searisksolutions.com
 908-339-7439

<https://www.equinor.com/en/what-we-do/empirewind.html>

<https://www.facebook.com/groups/597095231201268/>

<http://www.searisksolutions.com/>

