

Empire Wind 1 Fisheries Compensation Program

The Empire Wind 1 Fisheries Compensation Program offers compensation to commercial and charter/for-hire fishermen and shoreside businesses that may be economically impacted by Empire Wind 1's construction and operation activities.

Who is eligible?

Commercial Fishermen and Charter for-hire:

- Having fished in the eligible Empire Wind 1 area (shown on map below) in three years between 2020 and 2024, as a minimum, and
- Holding a current commercial permit

Shoreside Services Providers:

- Located within 10 miles of New Bedford, Cape May or Point Pleasant or having >25% of their business associated with the project area, and
- 50% or more of the business's revenue is from fishing support services (bait, ice, vessel repair, seafood dealers, etc.)

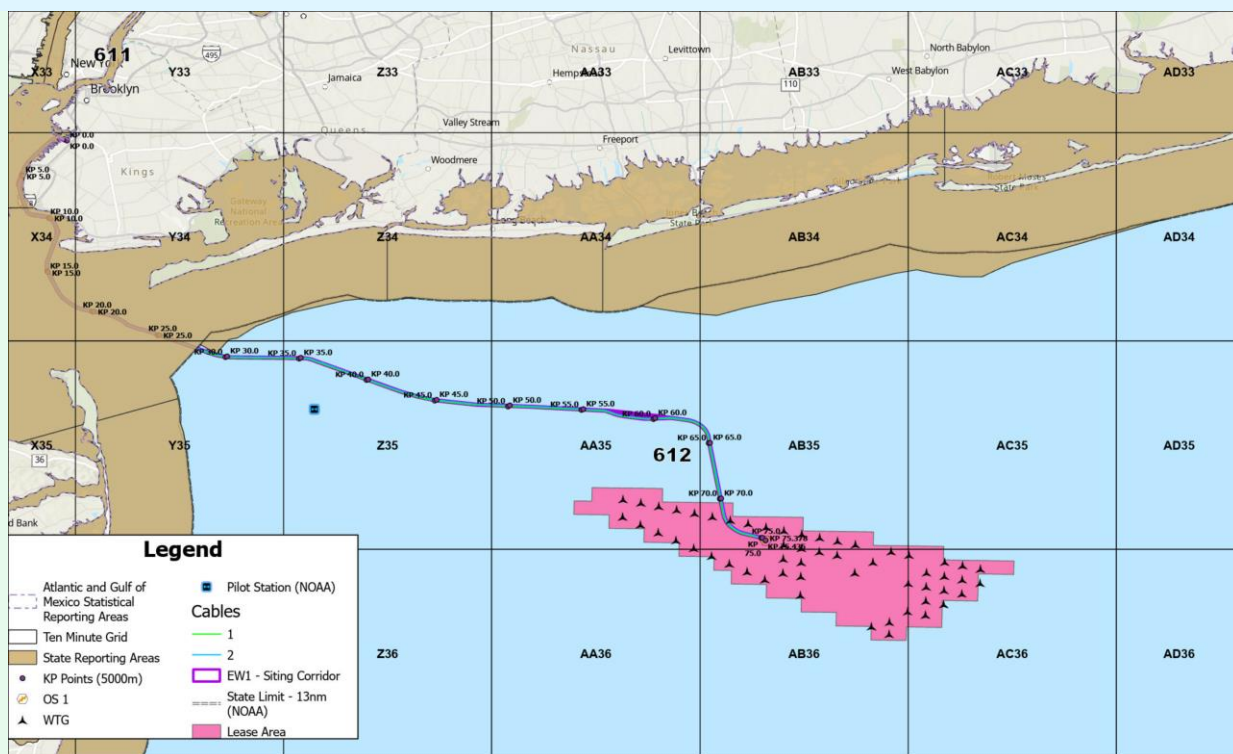
What documentation is required?

Commercial Fishermen and Charter for-hire:

- Proof of current commercial permit, and
- Federal and/or state approved trip-level reporting information that establishes fishing activity within Empire Wind 1 area, and
- Revenue data from three years between 2020 and 2024

Shoreside Services Providers:

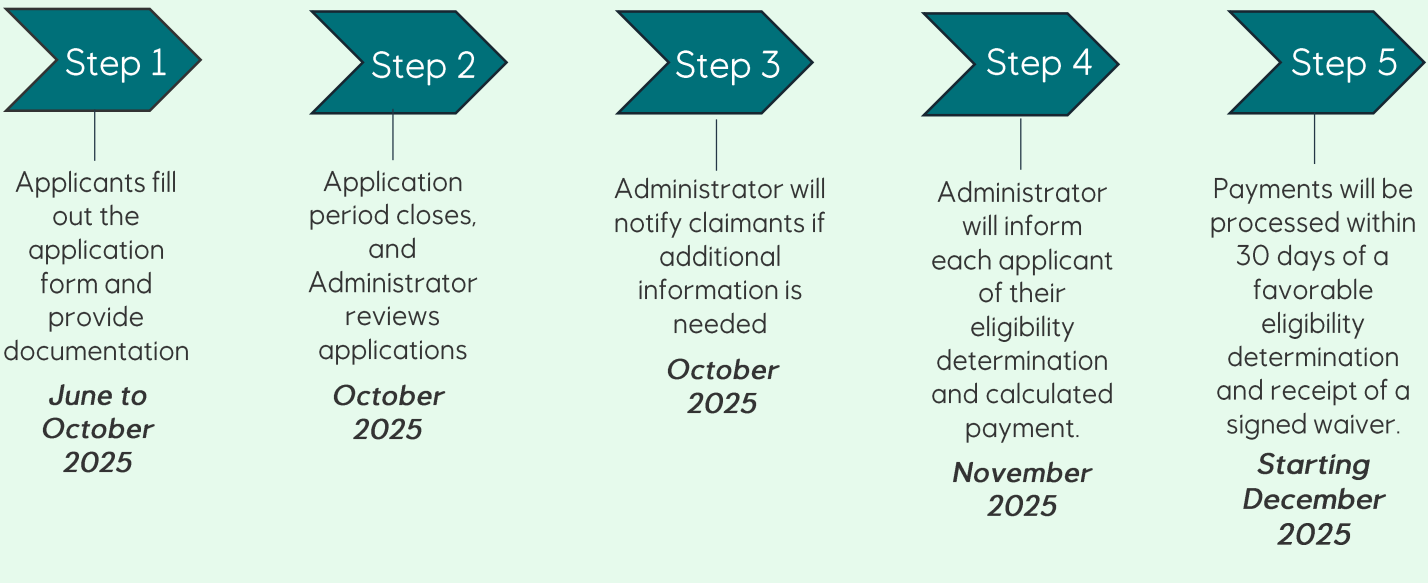
- Valid business license, seafood dealer and/or processor permit where applicable, and
- Documentation demonstrating portion of revenue generated from upstream and downstream fishing support service, and
- Revenue data from three years between 2020 and 2024



Eligible area includes fishing areas X34, Y34, Y35, Z35, AA35, AA36, AC36, AB35 (State), 612 (Federal)

Empire Wind 1 Fisheries Compensation Program

The Process: Applicants will access simple forms through the program website. The application period will open on June 13th and remain open for 120 days, to give applicants enough time to gather and upload the required supporting documentation.



Program Highlights

- **Proactive Disbursement.** Empire Wind 1's program allows local fishing business owners to receive compensation based on their revenue amounts in recent years. This approach, and the calculation formula, were guided by a detailed economic impact study by the Woods Hole Oceanographic Institution (WHOI).
- **Streamlined Claims Submission.** This program, administered by a neutral third-party administrator and in line with [BOEM guidance](#), allows fishers to receive support without the burdensome process of demonstrating losses. After the initial compensation determination, claimants have the option to appeal and submit evidence of higher actual impacts for consideration by the program administrator. This process will take place only once, and payments for years 2 to 7 will be automatically calculated and disbursed by the administrator.
- **Support for small and large fishers.** All eligible applicants will receive a minimum payment, with additional compensation based on the revenue they earn from fishing. This approach will guarantee support even for those with smaller earnings.
- **Shoreside Industry Fund.** In addition to direct payments to shoreside businesses, an Industry Support and Resilience Fund will be established to support the local fishing industry, funding initiatives such as improvements to port facilities or marketing initiatives. A fishing industry organization will be contracted to oversee this fund and distribute grants for selected projects.

Scan for more
information



www.ew1fisheriescompensation.com