

FACT SHEET

# Upcoming Offshore Surveying

In a key step towards bringing renewable offshore wind energy to New York, the Empire Wind team plans to begin two survey activities off the south shore of Long Island in June 2023. Both surveys are a normal part of the offshore wind development process and will further assess the local seabed for the project's underwater export cable design and construction.

All survey activities will be performed in accordance with permitting requirements, as specified by the the Bureau of Ocean Energy Management (BOEM), U.S Army Corps of Engineers (USACE), the New York State Department of Environmental Conservation (NYSDEC), and the New York Department of State (NYSDOS) Coastal Zone Management Program.

## Short-Term Underwater Sediment Surveying Late June – Early August

### About the offshore sediment survey

Beginning in late June, sediment survey experts will sample the seabed along the proposed Empire Wind 1 and 2 cable routes to help planners develop a safe and environmentally sensitive project.

No excavation or dredging will take place, no sonar will be used, and no subsurface sound outside of normal mechanical operation will be produced during this process. Though not shown here, sediment surveys will also take place off Brooklyn for the Empire Wind 1 project.

### What are they surveying for?

Up to 35 sediment core samples will be analyzed to inform the design of underwater cables for maximum safety, security, and alignment with the local environment.

### When will offshore sediment surveying start and how long will it last?

Surveying is expected to begin in late June and be completed by August 15th, 2023.

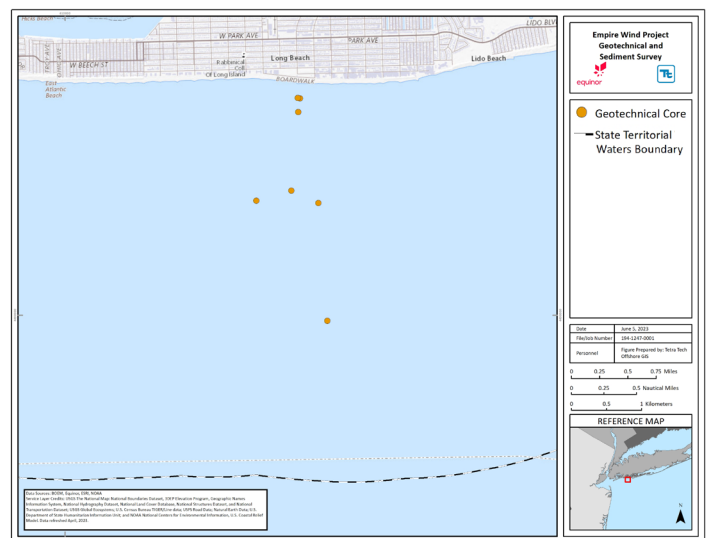
### Where is the offshore sediment surveying taking place?

Most surveying will take place two to three miles from shore. The nearest geotechnical sampling will be completed approximately 500 feet from shore between Edwards Boulevard and Long Beach Boulevard.

### How is the offshore sediment surveying conducted?

Surveying is completed via jack-up (self-elevating) vessels, which use a small, mounted drill rig to collect 3-inch-wide sediment cores.

### OFFSHORE SEDIMENT SURVEY LOCATIONS



## What impact could offshore sediment surveying have?

This survey is not expected to have any impact on local wildlife in the air, sea or on land. Recreational or professional activity is also not expected to be impacted by this process, either on or offshore.

Most of the surveying will take place two to three miles offshore and may be visible from shore. The surveying vessels will be most visible during nearshore operations, which are expected to last up to two days. Some lights may be visible at night, and operational sounds are not expected to be noticeable from shore.

## Offshore Underwater Survey for Munitions and Explosives of Concern (MEC) June 15, 2023 – December 2023

### About the offshore MEC survey

Beginning June 15th, geophysical survey experts will scan the seabed along the proposed Empire Wind 1 and 2 cable routes to see if they detect abandoned military materials that could pose a risk to our construction team and the local area.

### When will MEC surveying start and how long will it last?

Surveying is expected to begin June 15th and is expected to be completed by December 2023.

### Where is the offshore MEC surveying taking place?

The survey crew will survey underwater along the export cable route and the Empire Wind lease area to locate these potentially obstructive materials.

### How is the offshore MEC surveying conducted?

The survey experts will be using a gradiometer to locate metal objects and other geophysical survey equipment to map the ocean floor to determine whether there are any obstructions along the planned cable route and in the Empire Wind Lease area.

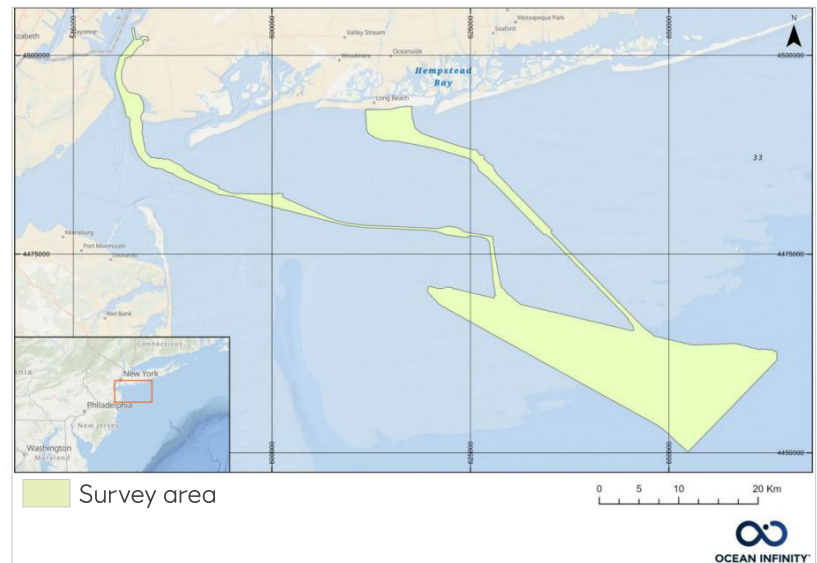
### What impact could offshore MEC surveying have?

No excavation or dredging will take place and no devices will be removed or detonated during this survey. **Empire Wind has requested no protected species "takes" and expects no impact to wildlife from these activities.** As an added precaution, Protected Species Observers will also be onboard the survey vessel to watch for marine wildlife in the area.

As with the offshore sediment survey, some lights may be visible at night, and operational sounds are not expected to be noticeable from shore.

If you have any questions or concerns about ongoing survey operations, please reach out directly at [empirewind@equinor.com](mailto:empirewind@equinor.com) or contact the Empire Wind Information line at (833) 699-1965.

### OFFSHORE MEC SURVEY AREA



## Have a question about Empire Wind?

Contact [empirewind@equinor.com](mailto:empirewind@equinor.com)

To sign up for project updates, visit [www.empirewind.com](http://www.empirewind.com)

*Empire Wind is a 50/50 partnership between Equinor and bp. Equinor will be the operator through the development, construction, and operations phases of the project.*