



**Empire
Wind
Survey Update**

April 2021

Equinor Wind US

Equinor Wind continues planning Empire Wind in BOEM lease area OCSA-0512. The area extends from 14 miles south of Long Island, spanning 79,350 acres, in water depths between 65 and 131 feet (10-22 fathoms). As part of the site development process, Equinor has been conducting surveys since Spring 2018.



Vessel: BRAZOS

MMSI: 367589320

Call sign: WDG9589

Flag: USA

2021 Offshore Surveys Continue

Geotechnical soil investigations are planned at Gowanus Bay, Gravesend Bay and between Ambrose Channel & Rockaway Point.

BEGINNING/ENDING DATES: April 1, 2021 through April 30, 2021

HOURS OF OPERATION: 24-hours per day, 7 days per week

EQUIPMENT ON SCENE: The L/B BRAZOS is a 145- foot by 100-foot three leg lift boat. The L/B BRAZOS will be conducting geotechnical soil sampling while jacked up out of the water at various shallow water locations off Gowanus Bay, Gravesend Bay and between Ambrose Channel and Rockaway Point New York. The vessel will have no manoeuvrability during Geotechnical soil sampling operations.

Estimated Coordinates of the Empire Wind lease area:

LATITUDE	LONGITUDE	LORAN
40°11.414'N	73°12.864'W	26585.04 - 43507.38
40°12.313'N	73°15.096'W	26605.31 - 43518.46
40°21.918'N	73°36.588'W	26790.20 - 43628.19
40°23.402'N	73°34.584'W	26778.55 - 43642.60
40°18.677'N	73°7.308'W	26554.98 - 43569.94
40°17.814'N	73°4.152'W	26529.05 - 43558.52

Sturgeon Monitoring Project

Supporting the Sturgeon Monitoring Project F/V Karoline Marie will be scouting the survey area with sturgeon monitors onboard. Prior to drilling/coring activities by Brazos, the scout vessel will mobilize to the project area (between South Brooklyn Marine Terminal and Ambrose Channel (all within NY State waters) and remain onsite for site clearance by the sturgeon monitors.

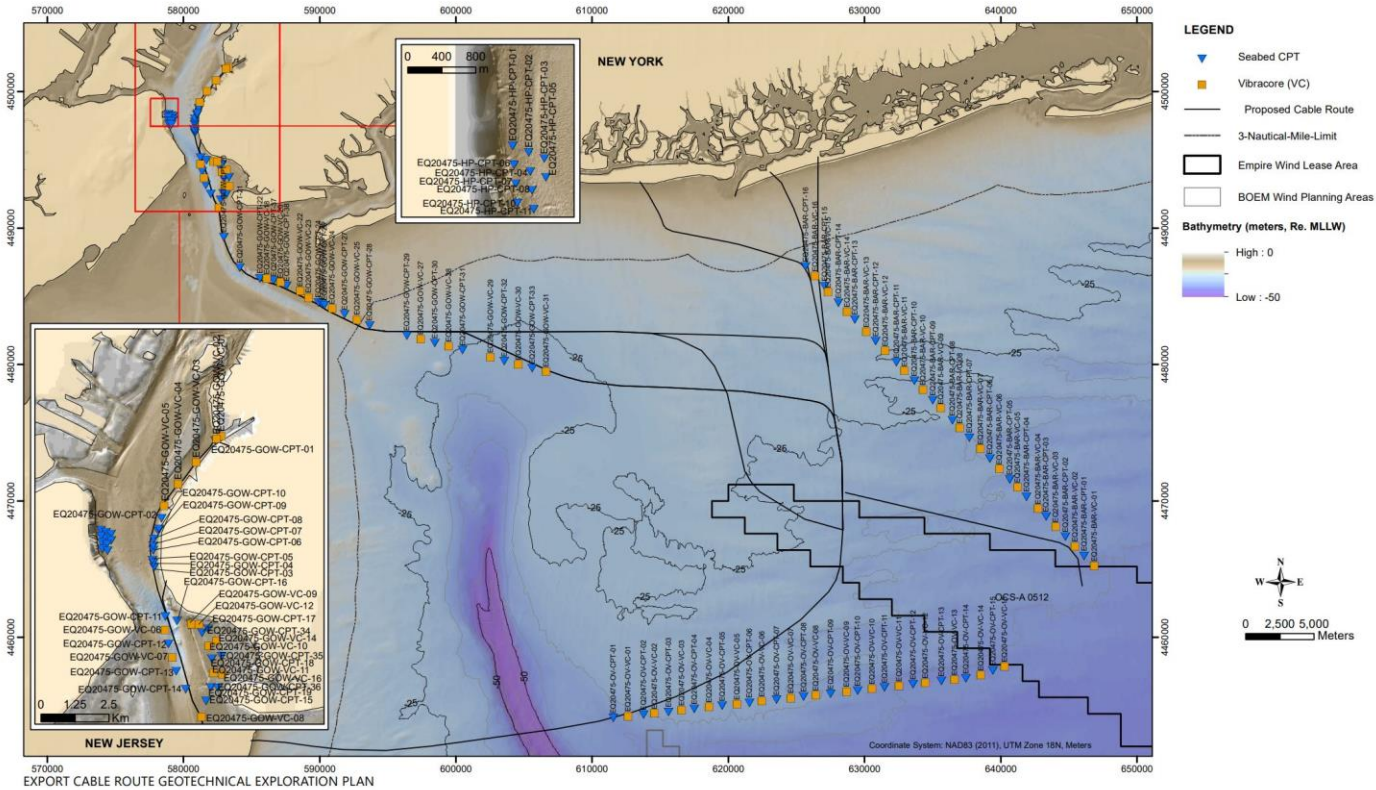
Vessel: Karoline Marie

MMSI: 367403380

Call sign: WDE8258



© steven kennedy
MarineTraffic.com



04.19021158 01 | Geotechnical Investigation

N:\01\geotech\02_2020\02_1902_1558_Equinor_Empire_Wind\02\02\20201107_ECR\Map\Plan_K1_ECR_Geotechnical_Location_20201228.mxd 12/29/2020, D:\cpl



Fisheries Liaison and Fisheries Representative Contacts:

Sea Risk Solutions is representing Equinor Wind as Fisheries Liaison Officers and are available 24/7 to address fisheries questions and concerns of project developments.

Elizabeth Marchetti
emarc@equinor.com
emarchetti@searisksolutions.com
 401-954-2902

Steve Drew
sdrew@searisksolutions.com
 908-339-7439

<https://www.equinor.com/en/what-we-do/empirewind.html>

<https://www.facebook.com/groups/597095231201268/>

<http://www.searisksolutions.com/>

